

Product datasheet

Anti-SERCA1 ATPase antibody [IIH11] ab2818

リコンビナント

★★★★☆ 3 Abreviews 10 References 画像数 4

製品の概要

製品名	Anti-SERCA1 ATPase antibody [IIH11]
製品の詳細	Mouse monoclonal [IIH11] to SERCA1 ATPase
由来種	Mouse
アプリケーション	適用あり: WB, IHC-P
種交差性	交差種: Mouse, Rat
免疫原	Tissue, cells or virus. This information is proprietary to Abcam and/or its suppliers.
エピトープ	This antibody recognizes an epitope between amino acids 199-505 of rabbit skeletal muscle ATPase, a region that is not exposed in native sarcoplasmic reticulum.
ポジティブ・コントロール	WB: Mouse and rat skeletal muscle tissue lysate. IHC-P: Mouse and rat skeletal muscle tissue.
特記事項	<p>This antibody clone is manufactured by Abcam. If you require a custom buffer formulation or conjugation for your experiments, please contact orders@abcam.com.</p> <p>This product is a recombinant monoclonal antibody, which offers several advantages including:</p> <ul style="list-style-type: none"> - High batch-to-batch consistency and reproducibility - Improved sensitivity and specificity - Long-term security of supply - Animal-free production <p>For more information see here.</p>

製品の特性

製品の状態	Liquid
保存方法	Shipped at 4°C. Store at +4°C short term (1-2 weeks). Upon delivery aliquot. Store at -20°C or -80°C. Avoid freeze / thaw cycle.
バッファー	<p>pH: 7.2</p> <p>Preservative: 0.01% Sodium azide</p> <p>Constituents: PBS, 40% Glycerol (glycerin, glycerine), 0.05% BSA</p>
精製度	Protein A purified
ポリ/モノ	モノクローナル
クローン名	IIH11

アプリケーション

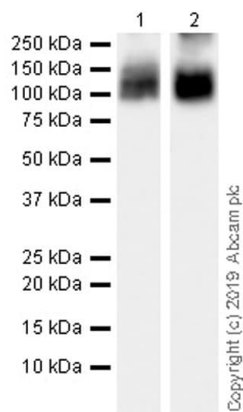
The Abpromise guarantee [Abpromise保証は](#)、次のテスト済みアプリケーションにおけるab2818の使用に適用されます
アプリケーションノートには、推奨の開始希釈率がありますが、適切な希釈率につきましてはご検討ください。

アプリケーション	Abreviews	特記事項
WB	★★★★★ (1)	Use a concentration of 0.466 µg/ml. Detects a band of approximately 110 kDa (predicted molecular weight: 110 kDa).
IHC-P		Use a concentration of 0.177 µg/ml. Perform heat mediated antigen retrieval with Tris/EDTA buffer pH 9.0 before commencing with IHC staining protocol.

ターゲット情報

機能	Key regulator of striated muscle performance by acting as the major Ca(2+) ATPase responsible for the reuptake of cytosolic Ca(2+) into the sarcoplasmic reticulum. Catalyzes the hydrolysis of ATP coupled with the translocation of calcium from the cytosol to the sarcoplasmic reticulum lumen. Contributes to calcium sequestration involved in muscular excitation/contraction.
組織特異性	Skeletal muscle, fast twitch muscle (type II) fibers.
関連疾患	Brody myopathy
配列類似性	Belongs to the cation transport ATPase (P-type) (TC 3.A.3) family. Type IIa subfamily.
発生段階	Isoform SERCA1A accounts for more than 99% of SERCA1 isoforms expressed in adult skeletal muscle, while isoform SERCA1B predominates in neo-natal skeletal muscle.
細胞内局在	Endoplasmic reticulum membrane. Sarcoplasmic reticulum membrane.

画像



Western blot - Anti-SERCA1 ATPase antibody [IIH11] (ab2818)

All lanes : Anti-SERCA1 ATPase antibody [IIH11] (ab2818) at 1/1000 dilution

Lane 1 : Mouse skeletal muscle tissue lysate

Lane 2 : Rat skeletal muscle tissue lysate

Lysates/proteins at 20 µg per lane.

Secondary

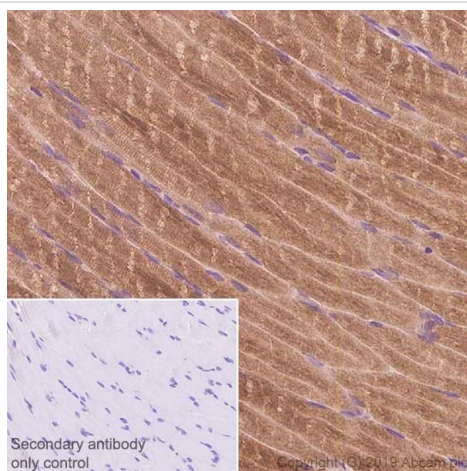
All lanes : Peroxidase-Conjugated Goat anti-Mouse IgG (H+L) at 1/10000 dilution

Predicted band size: 110 kDa

Observed band size: 110 kDa

Exposure time: 48 seconds

Blocking/Dilution buffer: 5% NFDM/TBST.

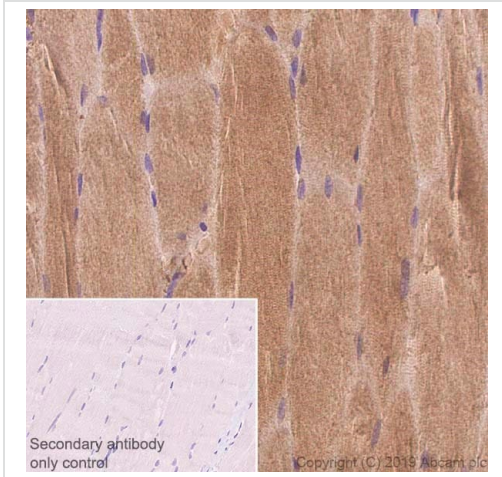


Immunohistochemistry (Formalin/PFA-fixed paraffin-embedded sections) - Anti-SERCA1 ATPase antibody [IIH11] (ab2818)

Immunohistochemical analysis of paraffin-embedded rat skeletal muscle tissue labeling SERCA1 ATPase with ab2818 at 0.177 µg/ml, followed by ready to use secondary. Cytoplasmic staining on rat skeletal muscle tissue is observed. The section was incubated with ab2818 for 15 mins at RT. The immunostaining staining was performed on a Leica Biosystems BOND® RX instrument. Counterstained with hematoxylin.

Secondary antibody only control: Used PBS instead of primary antibody, followed by ready to use secondary.

Heat mediated antigen retrieval with Tris-EDTA buffer (pH 9.0) for 20 mins.







Immunohistochemistry (Formalin/PFA-fixed paraffin-embedded sections) - Anti-SERCA1 ATPase antibody [11H11] (ab2818)

Immunohistochemical analysis of paraffin-embedded mouse skeletal muscle tissue labeling SERCA1 ATPase with ab2818 at 0.117 µg/ml, followed by ready to use secondary. Cytoplasmic staining on mouse skeletal muscle tissue is observed. The section was incubated with ab2818 for 15 mins at RT. The immunostaining staining was performed on a Leica Biosystems BOND® RX instrument. Counterstained with hematoxylin.

Secondary antibody only control: Used PBS instead of primary antibody, followed by ready to use secondary.

Heat mediated antigen retrieval with Tris-EDTA buffer (pH 9.0) for 20 mins.

Why choose a recombinant antibody?

 <p>Research with confidence Consistent and reproducible results</p>	 <p>Long-term and scalable supply Recombinant technology</p>
 <p>Success from the first experiment Confirmed specificity</p>	 <p>Ethical standards compliant Animal-free production</p>

Anti-SERCA1 ATPase antibody [11H11] (ab2818)

Please note: All products are "FOR RESEARCH USE ONLY. NOT FOR USE IN DIAGNOSTIC PROCEDURES"

Our Abpromise to you: Quality guaranteed and expert technical support

- Replacement or refund for products not performing as stated on the datasheet
- Valid for 12 months from date of delivery

- Response to your inquiry within 24 hours
- We provide support in Chinese, English, French, German, Japanese and Spanish
- Extensive multi-media technical resources to help you
- We investigate all quality concerns to ensure our products perform to the highest standards

If the product does not perform as described on this datasheet, we will offer a refund or replacement. For full details of the Abpromise, please visit <https://www.abcam.co.jp/abpromise> or contact our technical team.

Terms and conditions

- Guarantee only valid for products bought direct from Abcam or one of our authorized distributors