

Version 5 Last updated 19 April 2017

ab197242 Extracellular O₂ Consumption Reagent

For the measurement of extracellular oxygen consumption in isolated mitochondria, cell populations, 3D culture models, tissues and enzymes.

This product is for research use only and is not intended for diagnostic use.

Table of Contents

1. Overview	1
2. Protocol Summary	2
3. Precautions	3
4. Storage and Stability	3
5. Limitations	4
6. Materials Supplied	4
7. Reagent Preparation	4
8. Materials Required, Not Supplied	5
9. Technical Hints	6
10. Plate Reader Set-Up	7
11. Signal Optimization	13
12. Sample Preparation	14
13. Assay Procedure	16
14. Calculations	18
15. Typical Data	19
16. Notes	20

1. Overview

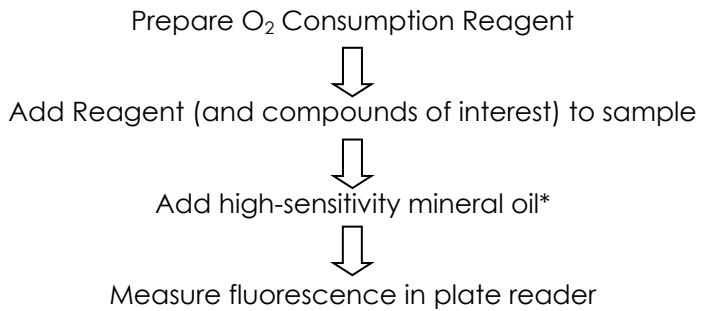
Extracellular O₂ Consumption Reagent (ab197242) measures extracellular oxygen consumption rate (OCR) in a variety of samples.

Mitochondrial dysfunction is implicated in numerous disease states and is also a major mechanism of drug-induced toxicity. Oxygen consumption is one of the most informative and direct measures of mitochondrial function. Traditional methods of measuring oxygen consumption are hampered by the limitations of low throughput and high complexity. The Extracellular O₂ Consumption Reagent (ab197242) solves these limitations by providing a direct, real-time measurement of extracellular oxygen consumption rate (OCR) to analyze cellular respiration and mitochondrial function.

The assay is based on the ability of oxygen to quench the excited state of Extracellular O₂ Consumption reagent. As the test material respire, oxygen is depleted in the surrounding environment, which is seen as an increase in phosphorescence signal. The addition of a high-sensitivity mineral oil (**not supplied**, available in Extracellular O₂ Consumption Assay (ab197243)) is used to limit back diffusion of ambient oxygen. Measured on standard fluorescence plate readers (96- or 384- well), with standard cell culture microplates, the Extracellular O₂ Consumption Reagent (ab197242) is suitable for use with whole cell populations (both adherent and suspension cells), isolated mitochondria, a wide range of 3D culture models, tissues, small organisms, as well as isolated enzymes, bacteria, yeasts and molds.

The flexible plate reader format, allows multiparametric or multiplex combination with other similar products. For example, in combination with Glycolysis Assay (ab197244), the Extracellular O₂ Consumption Reagent (ab197242) allows simultaneous real-time measurement of mitochondrial respiration and glycolysis and the analysis of the metabolic phenotype of cells and the shift (flux) between the two pathways under pathological states.

2. Protocol Summary



*Not supplied

3. Precautions

Please read these instructions carefully prior to beginning the assay.

- All kit components have been formulated and quality control tested to function successfully as a kit.
- We understand that, occasionally, experimental protocols might need to be modified to meet unique experimental circumstances. However, we cannot guarantee the performance of the product outside the conditions detailed in this protocol booklet.
- Reagents should be treated as possible mutagens and should be handled with care and disposed of properly. Please review the Safety Datasheet (SDS) provided with the product for information on the specific components.
- Observe good laboratory practices. Gloves, lab coat, and protective eyewear should always be worn. Never pipet by mouth. Do not eat, drink or smoke in the laboratory areas.
- All biological materials should be treated as potentially hazardous and handled as such. They should be disposed of in accordance with established safety procedures.

4. Storage and Stability

Store kit at 4°C in the dark immediately upon receipt. Kit has a storage time of 1 year from receipt, providing components have not been reconstituted.

Refer to list of materials supplied for storage conditions of individual components. Observe the storage conditions for individual prepared components in the Materials Supplied section.

Aliquot components in working volumes before storing at the recommended temperature.

Δ Note: Reconstituted reagent is stable for 1 month.

5. Limitations

- Assay kit intended for research use only. Not for use in diagnostic procedures.
- Do not mix or substitute reagents or materials from other kit lots or vendors. Kits are QC tested as a set of components and performance cannot be guaranteed if utilized separately or substituted.

6. Materials Supplied

Item	Quantity	Storage condition (before prep)	Storage condition (after prep)
Extracellular O ₂ Consumption Reagent	1 vial	4°C	-20°C

7. Reagent Preparation

Briefly centrifuge small vials at low speed prior to opening.

7.1 Extracellular O₂ Consumption Reagent:

Prepare a stock solution of the Extracellular O₂ Consumption Reagent by adding 1 mL of ddH₂O, PBS, culture media or buffer to the vial. Mix by gently aspirating 3 – 4 times.

Recommended working dilution = 1/15 (10 µL per 150 µL of sample for 1x 96-wp).

Avoid freeze/thaw. Reconstituted reagent is stable for one month.

8. Materials Required, Not Supplied

These materials are not included in the kit, but will be required to successfully perform this assay:

- High-Sensitivity Mineral Oil – provided in Extracellular O₂ Consumption Assay (ab197243)
- Microplate reader capable of measuring fluorescence, with suitable filter and plate temperature control – see Instrument and Measurement Settings section for suitable plate readers
- Double distilled water (ddH₂O)
- Pipettes and pipette tips, including multi-channel pipette
- Assorted glassware for the preparation of reagents and buffer solutions
- Tubes for the preparation of reagents and buffer solutions
- Sterile 96 well plate (black wall with clear flat bottom), or standard clear plates for cell culture

For cells:

- Cell culture medium

For isolated mitochondria:

- Measurement buffer (250 mM sucrose, 15 mM KCl, 1 mM EGTA, 5 mM MgCl₂, 30 mM, K₂HPO₄, pH 7.4)
- Mitochondrial substrate (succinate, glutamate or malate)
- ADP

9. Technical Hints

- **This kit is sold based on number of tests. A “test” simply refers to a single assay well. The number of wells that contain sample, control or standard will vary by product. Review the protocol completely to confirm this kit meets your requirements. Please contact our Technical Support staff with any questions.**
- Selected components in this kit are supplied in surplus amount to account for additional dilutions, evaporation, or instrumentation settings where higher volumes are required. They should be disposed of in accordance with established safety procedures.
- Avoid foaming or bubbles when mixing or reconstituting components.
- Avoid cross contamination of samples or reagents by changing tips between sample, standard and reagent additions.
- Ensure plates are properly sealed or covered during incubation steps.
- Ensure all reagents and solutions are at the appropriate temperature before starting the assay.
- Make sure all necessary equipment is switched on and set at the appropriate temperature.
- Refer to Instrument and Measurement Settings table (Table 1) for recommended settings for your plate reader.
- While compatible with all plate types, black border clear bottom plates give optimal signal-to-noise ratios.
- For first time users, we recommend performing a Signal Optimization Step (see Section 11).

10. Plate Reader Set-Up

10.1 Measurement Parameters

The Extracellular Consumption Reagent is a chemically stable and inert, biopolymer-based, cell impermeable oxygen-sensing fluorophore.

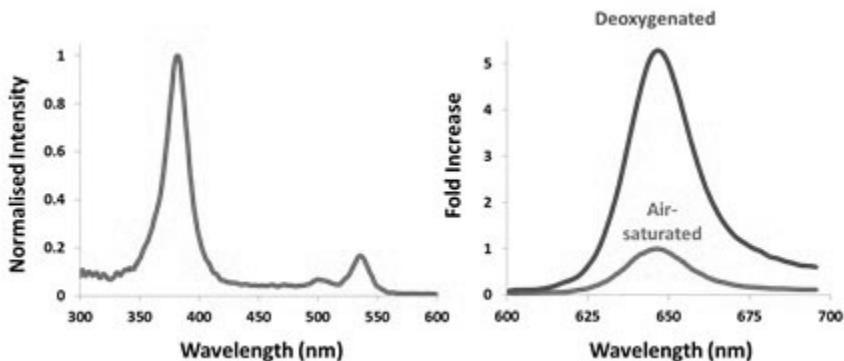


Figure 1. Excitation and emission spectra of the Extracellular O₂ Consumption Reagent. Left panel shows normalized excitation (Ex = 360 – 400 nm; Peak 380 nm). Right panel shows emission (Em = 630 – 680 nm; Peak 650 nm) in deoxygenated and oxygenated (air-saturated) conditions.

	Peak Maxima (nm)	Peak (nm)
Excitation*	380	360 – 400
Emission	650	630 – 680

*Excitation at 532 ± 7.5 nm is also possible

- This assay is measured with prompt or time-resolved fluorescence (TR-F) readers, monochromator or filter-based. Optimal wavelengths are $\lambda = 380$ nm for excitation ($\lambda = 532$ nm can also be used) and $\lambda = 650$ nm for emission.
- Probe signals should be at least 3 times above blank signal.
- The O₂ probe response is temperature dependent, so good temperature control of the plate during the measurement is important.

10.2 Fluorescence measurements

Outlined below are three fluorescence modalities that can be used with this assay, depending on the plate reader type and instrument setup.

10.2.1. Basic: Intensity Measurement

Measurement of Signal Intensity (sometimes referred to as Prompt) provides flexibility to use wide range of commonly available fluorescence-, monochromator or filter-based plate readers.

Optimal wavelengths are $\lambda = 380$ nm for excitation and $\lambda = 650$ nm for emission, with detection gain parameters (PMT) typically set at medium or high.

Δ Note: Extracellular consumption reagent should return Signal to Blank ratio (S:B) ≥ 3 .

10.2.2. Standard: TR-F Measurement

Using time-resolved fluorescence (TR-F) will increase performance levels. TR-F measurement reduces non-specific background and increases sensitivity.

Optimal delay time is 30 μ s and gate (integration) time is 100 μ s.

Δ Note: Extracellular consumption reagent should return Signal to Blank ratio (S:B) ≥ 3 . S:B ~ 10 are typical.

10.2.3. Advanced: Dual-Read TR-F (Lifetime calculation)

Optimal performance can be achieved using dual-read TR-F in combination with subsequent ratiometric Lifetime calculation, to maximize dynamic range.

Δ Note: Extracellular consumption reagent should return Signal to Blank ratio (S:B) ≥ 3 . S:B up to 60 are possible.

Dual-read TR-F and subsequent Lifetime calculation allows measurement of the rate of fluorescence decay of the Extracellular consumption reagent, and can provide measurements of oxygen consumption that are more stable and with a wider dynamic range than measuring signal intensity.

Optimal dual-delay and gate (integration) times:

- Integration window 1: 30 μ s delay (D1), 30 μ s measurement time (W1)
- Integration window 2: 70 μ s delay (D2), 30 μ s measurement time (W2)

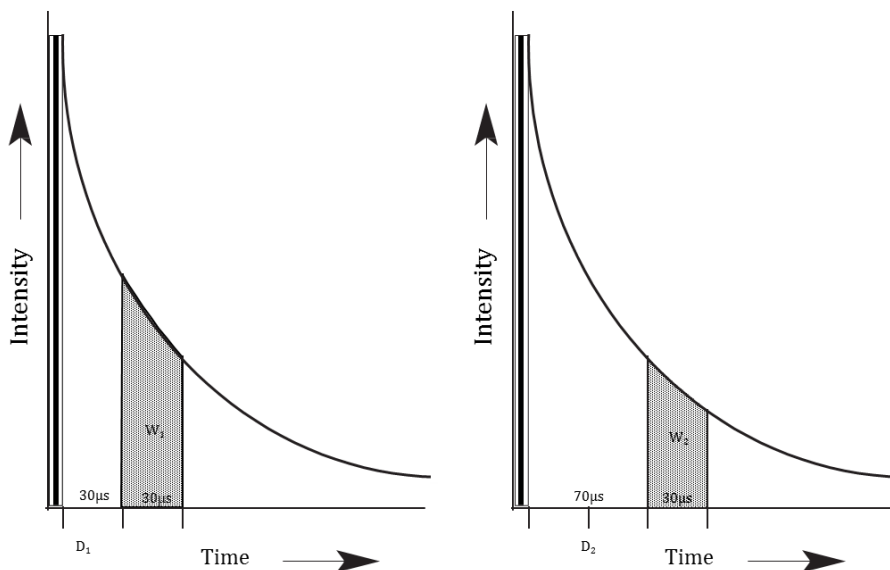


Figure 2. Illustrating dual read TR-F measurement.

Use the dual intensity readings to calculate the corresponding Lifetime (μ s) using the following transformation:

$$\text{Lifetime } (\mu\text{s}) [T] = (D_2 - D_1) / \ln(W_1 / W_2)$$

Where W_1 and W_2 represent the two (dual) measurement windows and D_1 and D_2 represent the delay time prior to measurement of W_1 and W_2 respectively. This provides Lifetime values in μ s at each measured time point for each individual sample (Figure 2).

Δ Note: S:B for Integration window 2 is recommended to be ≥ 10 to allow accurate Lifetime calculation. Range of Lifetime values should be 22 – 68 μ s, and should only be calculated from samples containing reagent. Lifetime values should not be calculated from blank wells.

See Instrument and Measurement Setting table below for instrument-specific setting and filters. Readers equipped with a TR-F mode, may achieve improved performance using delay and gate time of 30 μ s and 100 μ s.

Table 1. Recommended Instrument and Measurement Settings

Instrument	Optical Configuration	Intg1 (D ₁ /W ₁) Intg2 (D ₂ /W ₂)	Optimum Mode	Ex (nm) Em (nm)
BioTek: Cytation 3 / 5	Filter-based Top or bottom read	30 / 30 μ s 70 / 30 μ s	Dual-read TR-F (Lifetime)	Ex 380 \pm 20nm Em 645 \pm 15nm
BioTek: Synergy H1, Neo, 2	Filter-based Top or bottom read	30 / 30 μ s 70 / 30 μ s	Dual-read TR-F (Lifetime)	Ex 380 \pm 20nm Em 645 \pm 15nm
BMG Labtech: CLARIOstar	Filter-based Bottom read	30 / 30 μ s 70 / 30 μ s	Dual-read TR-F (Lifetime)	Ex 340 \pm 50nm (TR-EX) Em 665 \pm 50nm or Em 645 \pm 10nm With LP-TR Dichroic
BMG Labtech: FLUOstar Omega / POLARstar Omega	Filter-based Top or bottom read	30 / 30 μ s 70 / 30 μ s	Dual-read TR-F (Lifetime)	Ex 340 \pm 50nm (TR-EXL) Em 655 \pm 25nm (BP-655)
Perkin Elmer: VICTOR series/ X4, X5	Filter-based Top read	30 / 30 μ s 70 / 30 μ s	Dual-read TR-F (Lifetime)	Ex 340 \pm 40nm (D340) Em 642 \pm 10nm (D642)

Instrument	Optical Configuration	Intg1 (D ₁ /W ₁) Intg2 (D ₂ /W ₂)	Optimum Mode	Ex (nm) Em (nm)
Tecan: Infinite M1000Pro / F200Pro	Monochromator / Filter-based Top or bottom read	30 / 30μs 70 / 30μs	Dual-read TR-F (Lifetime)	Ex 380 ± 20nm Em 650 ±20nm or Em 670±40nm
BioTek: Synergy HTx / Mx	Monochromator / Filter-based Top or bottom read	30 / 100μs n/a	TR-F	Ex 380±20nm Em 650±15nm
BMG Labtech: PHERAstar FS	Filter-based Top or bottom read	40 / 100μs n/a	TR-F	Ex 337 nm (HTRF Module) Em 665 nm (HTRF Module)
BMG Labtech: FLUOstar Optima / POLARstar Optima	Filter-based Top or bottom read	30 / 100μs n/a	TR-F	Ex 340 ± 50nm (TR-EXL) Em 655 ± 50nm (BP-655)

Instrument	Optical Configuration	Intg1 (D ₁ /W ₁) Intg2 (D ₂ /W ₂)	Optimum Mode	Ex (nm) Em (nm)
Perkin Elmer: EnVision	Filter-based Top read	40 / 100µs n/a	TR-F	Ex 340 ±60nm (X340) Em 650 ± 8nm (M650)
Perkin Elmer: EnSpire	Monochromator based Top read	40 / 100µs n/a	TR-F	Ex 380 ±20nm Em 650±20nm
Tecan: Infinite M200Pro / Saffire / Genios Pro	Monochromator / Filter-based Top or bottom read	30 / 100µs n/a	TR-F	Ex 380±20nm Em 650±20nm
Mol. Devices: SpectraMax / Flexstation / Gemini	Monochromator based Top or bottom read	n/a n/a	Intensity (Prompt)	Ex 380nm Em 650nm

11. Signal Optimization

- This step is recommended for first time users.
 - Use a plate block heater for plate preparation and pre-warm plate reader to measurement temperature.
- 11.1 Prepare 8 replicate wells of a 96-well plate, by adding 150 μ L pre-warmed culture medium to each well (A1-A4, B1-B4).
 - 11.2 Add 10 μ L reconstituted Extracellular O₂ Consumption Reagent to 4 of the replicate wells (A1-A4) and 10 μ L water, PBS or media to the remaining replicates wells (B1-B4).
 - 11.3 Promptly add two drops (or 100 μ L) pre-warmed High sensitivity mineral oil to all eight replicate wells, taking care to avoid air bubbles.
 - 11.4 Read plate immediately in a fluorescence plate reader over 30 minutes (read every 2-3 minutes).
 - 11.5 Examine Signal Control well (A1-A4) and Blank Control well (B1-B4) readings (linear phase) and calculate Signal to Blank (S:B) ratio.

Δ Note: For dual read TR-F, calculate S:B for each measurement window.

	1	2	3	4
A	Media + O ₂ Reagent + Oil	Media + O ₂ Reagent + Oil	Media + O ₂ Reagent + Oil	Media + O ₂ Reagent + Oil
B	Media + Oil	Media + Oil	Media + Oil	Media + Oil

12. Sample Preparation

General Sample Information:

- Prepare a cell titration experiment to identify a suitable cell density for a specific cell type and conditions.
- Prepare test compounds for sample treatment as desired. Example of typical compounds that can be used as assay control are shown in the table below.

Typical control	Stock concentration
Antimycin A (Complex III inhibitor)	150 μ M in DMSO
FCCP (ETC uncoupler)	Titration recommended to establish best concentration
Glucose Oxidase (positive signal control)	1 mg/mL in ddH ₂ O

12.1 Adherent cells:

12.1.1. Seed cells in a 96-well plate at a density of $4 - 8 \times 10^5$ cells/well in 200 μ L culture medium.

12.1.2. Incubate overnight in a CO₂ incubator at 37°C.

Δ Note: Prepare a cell titration experiment to identify a suitable cell density for a specific cell type and conditions.

12.2 Suspension cells:

Seed cells in a 96-well plate at a density of 4×10^6 cells/well in 150 μ L culture medium.

Δ Note: Prepare a cell titration experiment to identify a suitable cell density for a specific cell type and conditions.

12.3 Isolated mitochondria:

Δ Note: Mitochondria should be freshly prepared as per user's protocol and should not be left on ice longer than recommended in the literature.

Prepare a cell titration experiment to identify a suitable cell density for a specific cell type and conditions.

Initial isolated mitochondria assay optimization: prepare a six-point dilution series of mitochondrial preparation in respiration buffer in 1.5 mL total volume for each concentration.

- 12.3.1. Prepare measurement buffer as follows: 250 mM sucrose, 15 mM KCl, 1 mM EGTA, 5 mM MgCl₂, 30 mM, K₂HPO₄; adjust to pH 7.4.
- 12.3.2. Dilute isolated mitochondria to the desired concentration (typical range = 0.125 – 1.5 mg/mL final concentration) in measurement buffer, depending on the substrate(s) used and which respiration state is being measured.
- 12.3.3. Add 50 µL of diluted mitochondria (in measurement buffer) to each test well.
- 12.3.4. Dissolve substrate in measurement buffer and add 50 µL of solution to test wells (see table below for suggested concentrations).

Substrate	Mitochondria Concentration (mg/mL)	Typical final substrate concentration (mM)
Basal state [State 2]		
Glutamate/Malate	1.5	12.5 / 12.5
Succinate	1.0	25
ADP-stimulated respiration rate [State 3]		
Glutamate/Malate/ADP	1.0	12.5 / 12.5 / 1.65
Succinate/ADP	0.5	25 / 1.65

13. Assay Procedure

- We recommend that you assay all controls and samples in duplicate.
- Prepare all controls and samples as directed in the previous sections.
- Use a plate block heater for plate preparation and pre-warm plate reader to measurement temperature (typically 37°C).
- Sufficient cell numbers are required to produce measurable signal changes. Oxygen consumption rate is cell-type dependent – highly glycolytic cells may need to be trypsinized and concentrated prior to measurement.

13.1 Plate loading:

- 13.1.1. Adherent cells: remove culture media from all assay wells and replace with 150 μL of fresh culture media.
Suspension cells: ready to use as prepared in Step 12.2.
Isolated mitochondria: ready to use as prepared in Step 12.3.
- 13.1.2. Blank controls (we suggest using wells H11 and H12): add 150 μL fresh culture media (for cell-based assay) or 200 μL measurement buffer (for isolated mitochondria-based assay).

13.2 Assay set up:

- 13.2.1. Add 10 μL reconstituted Extracellular O_2 Consumption Reagent to each sample well.
- 13.2.2. Add 10 μL of fresh culture media to blank control wells.
- 13.2.3. Add 1 – 10 μL test compound (vehicle control and/or stock) to the wells.

Δ Note: we recommend keeping the volume of added compound low to minimize any potential effects of solvent vehicle.

- 13.2.4. Promptly seal each well by adding 100 μL (or 2 drops) of pre-warmed High Sensitivity mineral oil, taking care to avoid air bubbles.

Δ Note: plate preparation time should be kept to a minimum.

13.3 Measurement:

- 13.3.1. Insert the prepared plate into a fluorescence plate reader pre-set to the measurement temperature (typically 37°C).
- 13.3.2. Measure Extracellular O₂ Consumption signal at 1.5 min intervals for 90 – 120 minutes (longer for more glycolytic cells) at Ex/Em = 380/650 nm.

14. Calculations

- 14.1 Plot the Blank control well-corrected Extracellular O₂ consumption reagent Intensity or Lifetime values versus Time (min).
- 14.2 Select the linear proportion of the signal profile (avoiding any initial lag or subsequent plateau) and apply linear regression to determine the slope (OCR) and correlation coefficient for each well.

Δ Note: this approach is preferable to calculating a slope from averaged profiles.

- 14.3 Tabulate the slope values for each test sample, calculating appropriate average and standard deviation values across replicate wells. If optional Signal Control wells are included, the slope obtained for the Signal Control (sample without cells) should be subtracted from all test values.

15. Typical Data

Data provided for demonstration purposes only.

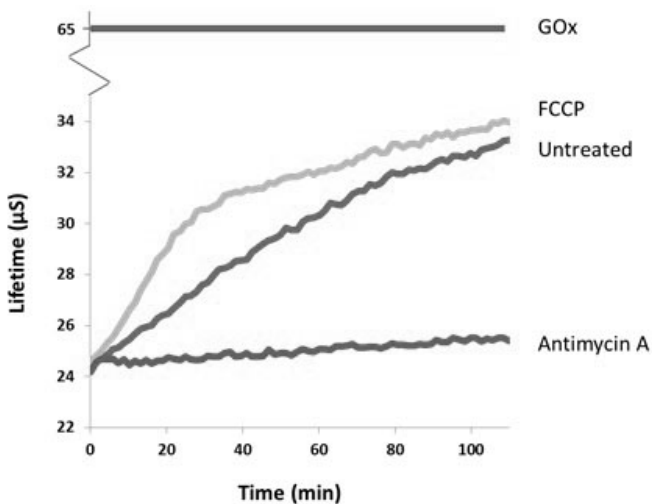


Figure 3. Typical Lifetime profile of Extracellular O_2 Consumption Reagent for adherent cells, treated with different electron transport chain (ETC) modulator compounds, including antimycin A (recommended negative control). Effect of glucose oxidase (GOx) as positive signal control is illustrated schematically.

16. Notes

Technical Support

Copyright © 2014-2017 Abcam, All Rights Reserved. The Abcam logo is a registered trademark. All information / detail is correct at time of going to print.

Austria

wissenschaftlicherdienst@abcam.com | 019-288-259

France

supportscientifique@abcam.com | 01.46.94.62.96

Germany

wissenschaftlicherdienst@abcam.com | 030-896-779-154

Spain

soportecientifico@abcam.com | 91-114-65-60

Switzerland

technical@abcam.com

Deutsch: 043-501-64-24 | Français: 061-500-05-30

UK, EU and ROW

technical@abcam.com | +44(0)1223-696000

Canada

ca.technical@abcam.com | 877-749-8807

US and Latin America

us.technical@abcam.com | 888-772-2226

Asia Pacific

hk.technical@abcam.com | (852) 2603-6823

China

cn.technical@abcam.com | 400 921 0189 / +86 21 2070 0500

Japan

technical@abcam.co.jp | +81-(0)3-6231-0940

Singapore

sg.technical@abcam.com | 800 188-5244

Australia

au.technical@abcam.com | +61-(0)3-8652-1450

New Zealand

nz.technical@abcam.com | +64-(0)9-909-7829