

Prestained Protein Ladder - Extra broad molecular weight (6.5 - 270 kDa) ab234592

1 References [画像数 1](#)

製品の概要

製品名	Prestained Protein Ladder - Extra broad molecular weight (6.5 - 270 kDa)
アプリケーション	適用あり: WB, SDS-PAGE
特記事項	<p>Prestained Protein Ladder ab234592 is a three-color protein standard with 10 pre-stained proteins covering a range of MW from 6.5-270 kDa. This prestained protein ladder allows you to monitor protein separation during SDS-polyacrylamide gel electrophoresis and verifying Western transfer efficiency on membranes (PVDF, nylon, or nitrocellulose) and for approximating the size of proteins.</p> <p>Key product features:</p> <p>Broad range: 6.5-270 kDa</p> <p>Ready to use: The ladder is supplied in the gel loading buffer and is ready to use.</p> <p>Easily identified: Proteins are covalently coupled with a blue chromophore except three reference bands (two orange bands at 30 kDa and 270 kDa and one green band at 52 kDa). 3 µl or 5 µl per loading for clear visualization during electrophoresis on 15-well or 10-well mini-gel, respectively. 2.5 µl per well for general Western transferring.</p> <p>Review other protein ladders in the unstained and prestained protein ladder guide.</p>

製品の特性

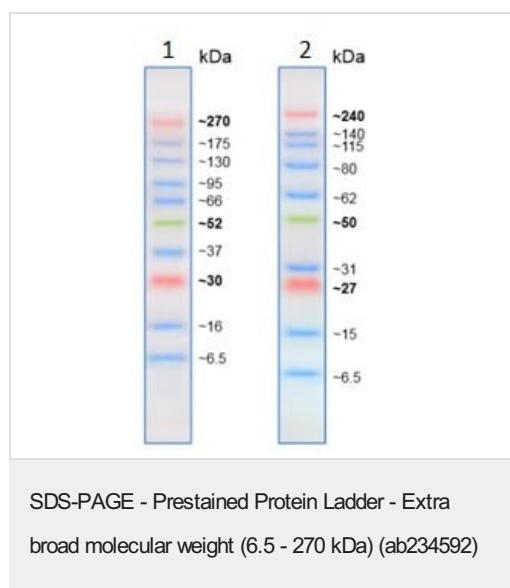
製品の状態	Liquid
保存方法	Shipped at 4°C. Store at +4°C short term (1-2 weeks). Store at -20°C long term.
バッファー	pH: 7.50 Preservative: 0.01% Sodium azide Constituents: 1.37% Tris phosphate, 0.03% EDTA, 2% Sodium lauryl sulfate, 0.15% DTT, 33% Glycerol

アプリケーション

The Abpromise guarantee **Abpromise保証は、次のテスト済みアプリケーションにおけるab234592の使用に適用されます**
アプリケーションノートには、推奨の開始希釈率がありますが、適切な希釈率につきましてはご検討ください。

アプリケーション	Abreviews	特記事項
WB		Use at an assay dependent concentration. For monitoring protein transfer onto membranes and sizing of proteins on WB. Recommended loading amounts: 2.5 µl.
SDS-PAGE		Use at an assay dependent concentration. For monitoring protein migration and sizing of proteins on SDS-PAGE. Recommended loading amounts: 3-5 µl per well for 15-well or 10-well mini-gel, respectively.

画像



SDS-PAGE analysis with ab234592.

Gel 1: Tris-Glycine 4-20%

Gel 2: Bis-Tris 4-12% MES buffer.

The apparent molecular weight (kDa) of each protein has been determined by calibration against unstained protein standards; supplemental data should be considered for more accurate adjustment in different electrophoresis conditions.

Please note: All products are "FOR RESEARCH USE ONLY. NOT FOR USE IN DIAGNOSTIC PROCEDURES"

Our Abpromise to you: Quality guaranteed and expert technical support

- Replacement or refund for products not performing as stated on the datasheet
- Valid for 12 months from date of delivery
- Response to your inquiry within 24 hours
- We provide support in Chinese, English, French, German, Japanese and Spanish
- Extensive multi-media technical resources to help you
- We investigate all quality concerns to ensure our products perform to the highest standards

If the product does not perform as described on this datasheet, we will offer a refund or replacement. For full details of the Abpromise, please visit <https://www.abcam.co.jp/abpromise> or contact our technical team.

Terms and conditions

- Guarantee only valid for products bought direct from Abcam or one of our authorized distributors