

Prestained Protein Ladder - Extra broad molecular weight (5 - 245 kDa) ab116029

★★★★★ [1 Abreviews](#) [3 References](#) [画像数 2](#)

製品の概要

製品名	Prestained Protein Ladder - Extra broad molecular weight (5 - 245 kDa)
アプリケーション	適用あり: WB, SDS-PAGE
特記事項	<p>Prestained Protein Ladder ab116029 is a three-color protein standard with 13 pre-stained proteins covering a wide range molecular weights from 3.5 to 245 kDa. Proteins are covalently coupled with a blue chromophore except for two reference bands (one green and one red band at 25 kDa and 75 kDa respectively) when separated on SDS-PAGE (Tris-glycine buffer).</p> <p>This product is also sold by Expedeon, an Abcam company as RunBlue™ TriColor Prestained Protein Ladder: NXA6050. This product was previously called Prism Ultra Protein Ladder (3.5 - 245 kDa).</p> <p>This prestained protein ladder is designed for monitoring protein separation during SDS polyacrylamide gel electrophoresis, verification of Western transfer efficiency on membranes (PVDF, nylon, or nitrocellulose) and for approximating the size of proteins. The ladder is supplied in gel loading buffer and is ready to use. Do not heat, dilute, add reducing agent before loading.</p> <p>Key product features:</p> <p>Broad range: 3.5-245 kDa</p> <p>Ready-to-use: Supplied in a loading buffer for direct loading on gels.</p> <p>Easy to identify: Includes green ~25 kDa and red ~75kDa reference bands.</p> <p>Sharp bands</p> <p>Recommended loading: ~1.5 - 2.5µl</p> <p>Review other protein ladders in the unstained and prestained protein ladder guide.</p>

製品の特性

製品の状態	Liquid
保存方法	Store at +4°C short term (1-2 weeks). Store at -20°C.
バッファー	<p>pH: 7.5</p> <p>Constituents: 0.44% Tris citrate/phosphate, 0.02% Urea, 2% Sodium lauryl sulfate, 0.02% DTT, 15% Glycerol</p>

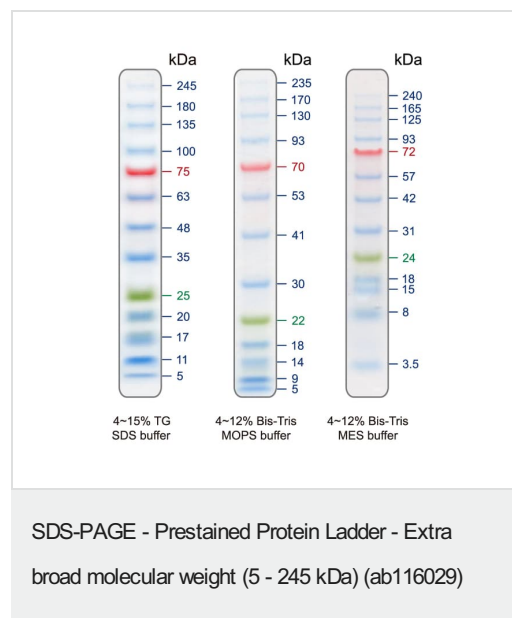
アプリケーション

The Abpromise guarantee Abpromise保証は、 次のテスト済みアプリケーションにおけるab116029の使用に適用されます

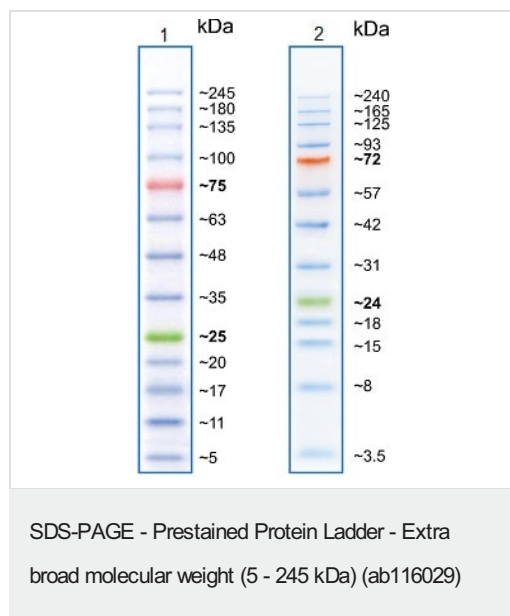
アプリケーションノートには、推奨の開始希釈率がありますが、適切な希釈率につきましてはご確認ください。

アプリケーション	Abreviews	特記事項
WB		Use at an assay dependent concentration. ~1.5-2.5 µl per well for general Western transferring. Apply more for thicker (> 1.5 mm) or larger gel.
SDS-PAGE		Use at an assay dependent concentration. 3 µl or 5 µl per loading for clear visualization during electrophoresis on 15-well or 10-well mini-gel, respectively.

画像



Gel 1: Tris-Glycine (4-15%) SDS buffer; Gel 2: Bis-Tris (4-12%) MOPS buffer; Gel 3: Bis-Tris (4-12%) MES buffer. Pre-stained molecular weight standards have a differing mobility and as a consequence varying apparent molecular weight when run in distinct SDS-PAGE buffer systems. The variance in pH of alternative buffers affects the charge of the labelled protein standard and its binding capacity for SDS. The apparent molecular weight of this marker has been determined by calibration against an unstained ladder in each electrophoresis condition.



Gel 1: Tris-Glycine (~4-20%), Gel 2: Bis-Tris (10%) MES buffer.
Pre-stained molecular weight standards have a differing mobility and as a consequence varying apparent molecular weight when run in distinct SDS-PAGE buffer systems. The variance in pH of alternative buffers affects the charge of the labelled protein standard and its binding capacity for SDS. The apparent molecular weight of this marker has been determined by calibration against an unstained ladder in each electrophoresis condition.

Please note: All products are "FOR RESEARCH USE ONLY. NOT FOR USE IN DIAGNOSTIC PROCEDURES"

Our Abpromise to you: Quality guaranteed and expert technical support

- Replacement or refund for products not performing as stated on the datasheet
- Valid for 12 months from date of delivery
- Response to your inquiry within 24 hours
- We provide support in Chinese, English, French, German, Japanese and Spanish
- Extensive multi-media technical resources to help you
- We investigate all quality concerns to ensure our products perform to the highest standards

If the product does not perform as described on this datasheet, we will offer a refund or replacement. For full details of the Abpromise, please visit <https://www.abcam.co.jp/abpromise> or contact our technical team.

Terms and conditions

- Guarantee only valid for products bought direct from Abcam or one of our authorized distributors