

### Rabbit Anti-Mouse IgG H&L (HRP) ab6728

★★★★★ [10 Abreviews](#) [1048 References](#) [画像数 5](#)

#### 製品の概要

製品名	Rabbit Anti-Mouse IgG H&L (HRP)
由来種	Rabbit
ターゲット生物種	Mouse
アプリケーション	<b>適用あり:</b> Dot blot, ELISA, IHC-P, IHC-Fr, Immunomicroscopy, ICC/IF, WB
免疫原	Mouse IgG whole molecule
標識	HRP

#### 製品の特性

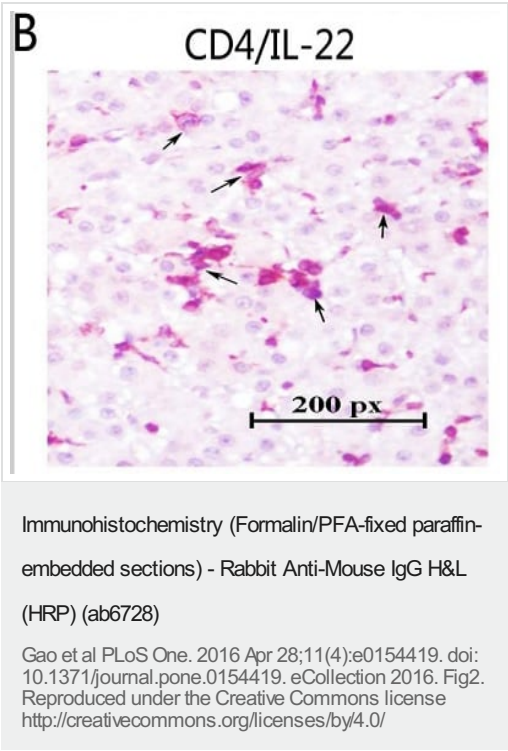
製品の状態	Liquid
保存方法	Shipped at 4°C. Store at +4°C.
バッファー	pH: 6.50 Preservative: 0.01% Gentamicin sulphate Constituents: 0.42% Tripotassium orthophosphate, 0.87% Sodium chloride, 1% BSA
精製度	Affinity purified
特記事項 (精製)	This product was prepared from monospecific antiserum by immunoaffinity chromatography using Mouse IgG coupled to agarose beads.
特記事項 (標識)	Horseradish Peroxidase (HRP)
ポリ/モノ	ポリクローナル
アイソタイプ	IgG
特記事項	Many of our customers have reported seeing brown precipitates in the vials. The brown precipitates are very common with HRP conjugated antibodies; we suggest vortexing the vial and using this antibody as normal. Our customer's feedback says the antibody worked great. If in case the antibody fails to give results then please contact our Scientific Support team for assistance.

#### アプリケーション

**The Abpromise guarantee**      **Abpromise保証は、次のテスト済みアプリケーションにおけるab6728の使用に適用されます**  
 アプリケーションノートには、推奨の開始希釈率がありますが、適切な希釈率につきましてはご検討ください。

アプリケーション	Abreviews	特記事項
Dot blot		Use at an assay dependent dilution.
ELISA		1/1000.
IHC-P		Use at an assay dependent dilution.
IHC-Fr		Use at an assay dependent dilution.
Immunomicroscopy		Use at an assay dependent dilution.
ICC/IF		1/1000 - 1/5000.
WB	★★★★★ (10)	1/2000 - 1/10000. PubMed: 17200442

画像



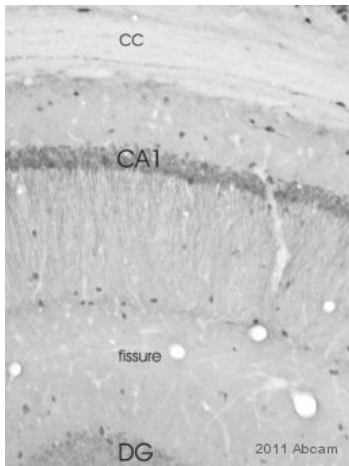
Distribution, expression and correlation of IL-22 cells with liver fibrosis in the liver.

Immunohistochemistry double staining identities IL-22 cells were produced by CD4 cells in liver tissue (Panel B).

Black arrows indicate double-positive cells.

Paraffin-embedded, formalin-fixed human liver tissues were incubated with anti-IL-22 ([ab18499](#)) or α-SMA antibody ([ab7817](#)) overnight at 4°C followed by heat mediated antigen retrieval with sodium citrate buffer (pH 6.0, 0.1 mol/L) for 20mins and blocking endogenous peroxidase activity with 0.3% H<sub>2</sub>O<sub>2</sub>. Revelation of primary antibody was carried out using horseradish peroxidase (HRP)-conjugated rabbit polyclonal anti-mouse ([ab6728](#)), secondary antibody followed by diamino-benzidine (DAB) and haematoxylin coloration. Double staining was performed with 3-amino-9-ethyl-carbazole (red color) for IL-22 and BCIP/ NBT (indigo color) for CD4.

Positively stained cells were counted at high-power field (hpf, ×400) according to described protocols.



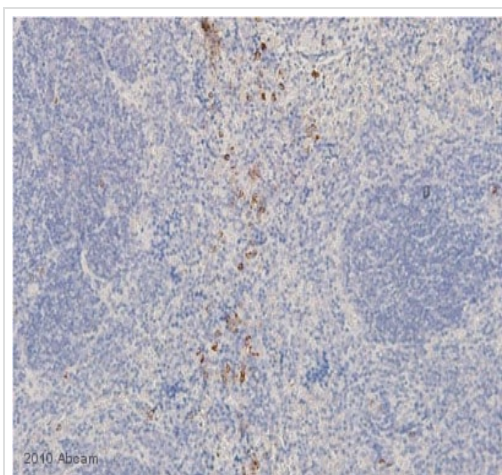
Immunohistochemistry (PFA perfusion fixed frozen sections) - Rabbit Anti-Mouse IgG H&L (HRP) (ab6728)

ab6728 was used at dilution 1/500 with the primary antibody [ab3089](#) in IHC-Fr (PFA perfusion). See the review on [ab3089](#).



Western blot - Rabbit Anti-Mouse IgG H&L (HRP) (ab6728)

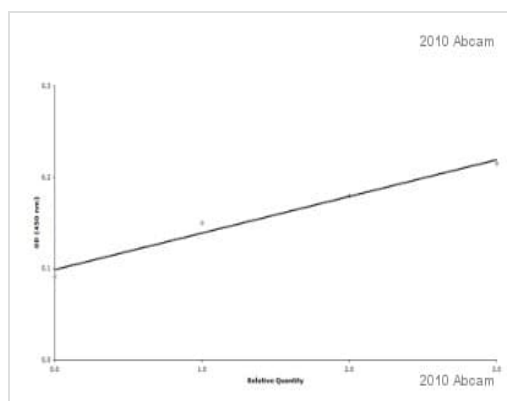
ab6728 was used at dilution 1/2000 with the primary antibody [ab72009](#) in WB. See the review on [ab72009](#).



Immunohistochemistry (Formalin/PFA-fixed paraffin-embedded sections) - Rabbit Anti-Mouse IgG H&L (HRP) (ab6728)

This image is courtesy of an anonymous Abreview.

**ab81785** staining LC3A/B in Mouse kidney tissue sections by Immunohistochemistry (IHC-P - formaldehyde-fixed, paraffin-embedded sections). Tissue was fixed with formaldehyde and blocked with 5% protein block for 5 minutes at room temperature; antigen retrieval was by heat mediation. Samples were incubated with primary antibody (1/50) for 1 hour. Anti-mouse HRP (ab6728) (1/200) was used as the secondary antibody.



ELISA - Rabbit Anti-Mouse IgG H&L (HRP) (ab6728)

ab6728 was used at dilution 1/1000 with the primary antibody **ab11038** in ELISA. See the review on **ab11038**.

**Please note:** All products are "FOR RESEARCH USE ONLY. NOT FOR USE IN DIAGNOSTIC PROCEDURES"

### Our Abpromise to you: Quality guaranteed and expert technical support

- Replacement or refund for products not performing as stated on the datasheet
- Valid for 12 months from date of delivery
- Response to your inquiry within 24 hours

- We provide support in Chinese, English, French, German, Japanese and Spanish
- Extensive multi-media technical resources to help you
- We investigate all quality concerns to ensure our products perform to the highest standards

If the product does not perform as described on this datasheet, we will offer a refund or replacement. For full details of the Abpromise, please visit <https://www.abcam.co.jp/abpromise> or contact our technical team.

#### **Terms and conditions**

---

- Guarantee only valid for products bought direct from Abcam or one of our authorized distributors