

# Rabbit Anti-Chicken IgY H&L (HRP) ab97140

[7 References](#) [画像数 1](#)

### 製品の概要

|          |  |
|----------|--|
| 製品名      | Rabbit Anti-Chicken IgY H&L (HRP)  |
| 由来種      | Rabbit   |
| ターゲット生物種 | Chicken  |
| 特異性      | By immunoelectrophoresis and ELISA this antibody reacts specifically with Chicken IgG and with light chains common to other Chicken immunoglobulins. No antibody was detected against non-immunoglobulin serum proteins. |
| アプリケーション | <b>適用あり:</b> ICC, IHC-P, ELISA, WB   |
| 標識       | HRP  |

### 製品の特性

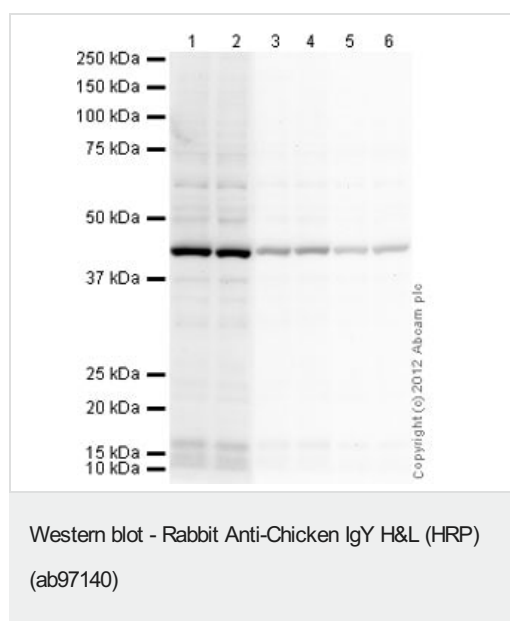
|           |   |
|-----------|---|
| 製品の状態     | Liquid  |
| 保存方法      | Shipped at 4°C. Store at +4°C.  |
| バッファー     | pH: 6.8<br>Constituents: 0.2% BSA, 0.05% CMIT/MIT based preservative  |
| 精製度       | Immunogen affinity purified   |
| 特記事項 (精製) | This antibody was isolated by affinity chromatography using antigen coupled to agarose beads and conjugated to Horse Radish Peroxidase (HRP). |
| 特記事項 (標識) | Molar enzyme/ antibody protein ratio is 4:1   |
| ポリ/モノ     | ポリクローナル   |
| アイソタイプ    | IgG   |
| 特記事項      | Part of the <b>AbExcel</b> range.   |

### アプリケーション

**The Abpromise guarantee** **Abpromise保証は、次のテスト済みアプリケーションにおけるab97140の使用に適用されず**  
アプリケーションノートには、推奨の開始希釈率がありますが、適切な希釈率につきましてはご検討ください。

| アプリケーション | Abreviews | 特記事項  |
|----------|-----------|---|
| ICC      |           | Use at an assay dependent dilution.   |
| IHC-P    |           | 1/200 - 1/5000.   |
| ELISA    |           | 1/10000 - 1/100000. (Primary).  |
| WB       |           | 1/2000 - 1/20000. Colorimetric: Use 1/5,000-1/30,000, Chemiluminescent: Use 1/10,000-1/50,000 |

## 画像



**All lanes :** Anti-beta Actin antibody - Loading Control ([ab13822](#)) at 1 µg/ml

**Lanes 1-6 :** HeLa (Human epithelial carcinoma cell line) Whole Cell Lysate  
Lysates/proteins at 10 µg per lane.

### Secondary

**Lanes 1 - 2 :** Rabbit polyclonal Secondary Antibody to Chicken IgY - H&L (HRP) (ab97140) at 1/2000 dilution

**Lanes 3 - 4 :** Rabbit polyclonal Secondary Antibody to Chicken IgY - H&L (HRP) (ab97140) at 1/10000 dilution

**Lanes 5 - 6 :** Rabbit polyclonal Secondary Antibody to Chicken IgY - H&L (HRP) (ab97140) at 1/20000 dilution

Developed using the ECL technique

Performed under reducing conditions.

**Exposure time :** 1 minute

**Please note:** All products are "FOR RESEARCH USE ONLY. NOT FOR USE IN DIAGNOSTIC PROCEDURES"

## Our Abpromise to you: Quality guaranteed and expert technical support

- Replacement or refund for products not performing as stated on the datasheet
- Valid for 12 months from date of delivery
- Response to your inquiry within 24 hours
- We provide support in Chinese, English, French, German, Japanese and Spanish
- Extensive multi-media technical resources to help you

- We investigate all quality concerns to ensure our products perform to the highest standards

If the product does not perform as described on this datasheet, we will offer a refund or replacement. For full details of the Abpromise, please visit <https://www.abcam.co.jp/abpromise> or contact our technical team.

#### **Terms and conditions**

---

- Guarantee only valid for products bought direct from Abcam or one of our authorized distributors