

Product datasheet

Mouse monoclonal [2C11] Anti-Human IgG1 Fc ab1927

★★★★★ [1 Abreviews](#) [12 References](#) [画像数 1](#)

製品の概要

製品名	Mouse monoclonal [2C11] Anti-Human IgG1 Fc
由来種	Mouse
ターゲット生物種	Human
アプリケーション	適用あり: IHC-Fr, ELISA
免疫原	Full length native protein (purified) corresponding to Human IgG1.

製品の特性

製品の状態	Liquid
保存方法	Shipped at 4°C. Store at +4°C short term (1-2 weeks). Upon delivery aliquot. Store at -20°C or -80°C. Avoid freeze / thaw cycle.
バッファー	pH: 7.40 Preservative: 0.09% Sodium azide Constituent: PBS
精製度	Protein A purified
特記事項 (精製)	Chromatography on protein A Sepharose
ポリ/モノ	モノクローナル
クローン名	2C11
ミエローマ	Sp2/0
アイソタイプ	IgG1
特記事項	Concentration varies from lot to lot and can be provided on request.

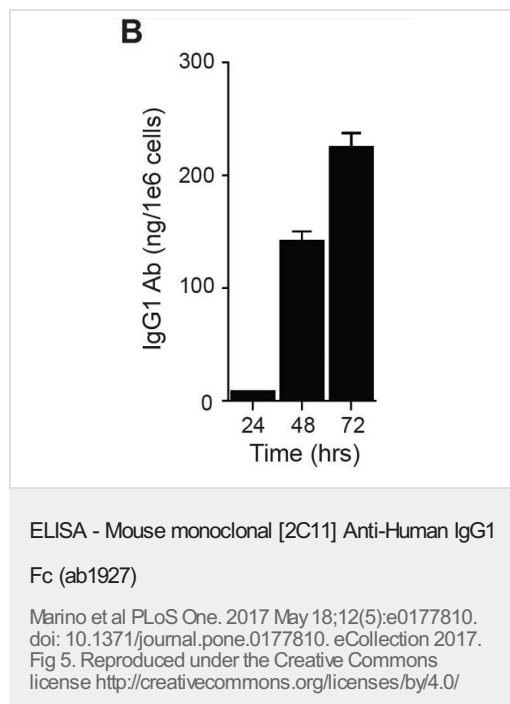
アプリケーション

The Abpromise guarantee **Abpromise保証は、次のテスト済みアプリケーションにおけるab1927の使用に適用されます**
アプリケーションノートには、推奨の開始希釈率がありますが、適切な希釈率につきましてはご検討ください。

アプリケーション	Abreviews	特記事項

アプリケーション	Abreviews	特記事項
IHC-Fr		Use at an assay dependent concentration.
ELISA		Use at an assay dependent concentration. PubMed: 24373342

画像



Characterisation of virus activity and functional expression of monoclonal antibodies.

(Panel B) IgG1 antibody expression detected in cellular supernatants of HT-29 cells infected with 10ppc NG-135 by anti-IgG1 ELISA.

Media was removed from infected or control cells, clarified by centrifugation and diluted 1 in 2 in 3% BSA/PBS for storage at -20°C. For quantification of human IgG1, 96 well plates (NUNC) were coated overnight, 4°C, with mouse monoclonal anti-human IgG1 Fc antibody (ab1927, Abcam) at a 1:1000 dilution in carbonate/bicarbonate buffer. Plates were blocked in 3% BSA/PBS, washed and samples and standards added to the plate for 1 hr and RT. Secondary detection was carried out using a HRP conjugated goat anti-human IgG Fab ([ab87422](#), Abcam) incubated for 1 hr, RT.

Please note: All products are "FOR RESEARCH USE ONLY. NOT FOR USE IN DIAGNOSTIC PROCEDURES"

Our Abpromise to you: Quality guaranteed and expert technical support

- Replacement or refund for products not performing as stated on the datasheet
- Valid for 12 months from date of delivery
- Response to your inquiry within 24 hours
- We provide support in Chinese, English, French, German, Japanese and Spanish
- Extensive multi-media technical resources to help you
- We investigate all quality concerns to ensure our products perform to the highest standards

If the product does not perform as described on this datasheet, we will offer a refund or replacement. For full details of the Abpromise, please visit <https://www.abcam.co.jp/abpromise> or contact our technical team.

Terms and conditions

- Guarantee only valid for products bought direct from Abcam or one of our authorized distributors