

### Goat Anti-Rabbit IgG H&L (HRP) ab97051

★★★★★ [10 Abreviews](#) [1055 References](#) [画像数 7](#)

#### 製品の概要

|          |  |
|----------|--|
| 製品名      | Goat Anti-Rabbit IgG H&L (HRP)   |
| 由来種      | Goat   |
| ターゲット生物種 | Rabbit   |
| 特異性      | By immunoelectrophoresis and ELISA this antibody reacts specifically with Rabbit IgG and with light chains common to other Rabbit immunoglobulins. No antibody was detected against non-immunoglobulin serum proteins. |
| アプリケーション | <b>適用あり:</b> ICC, IHC-P, ELISA, WB   |
| 標識       | HRP  |

#### 製品の特性

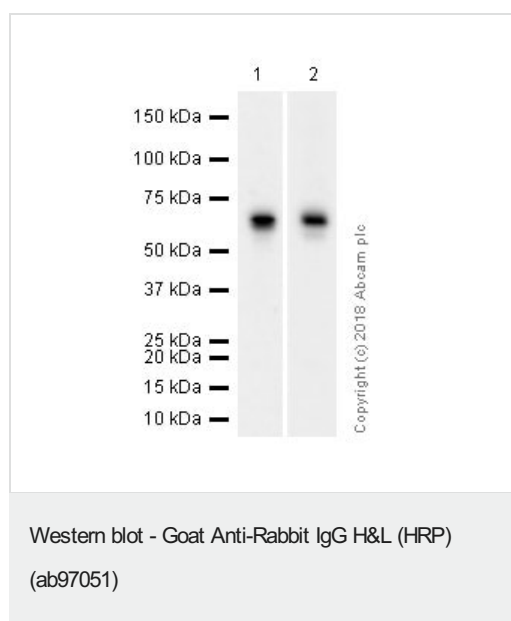
|           |   |
|-----------|---|
| 製品の状態     | Liquid  |
| 保存方法      | Shipped at 4°C. Store at +4°C.  |
| バッファー     | pH: 6.80<br>Constituents: 0.2% BSA, PBS, 0.05% CMIT/MIT based preservative  |
| 精製度       | Immunogen affinity purified   |
| 特記事項 (精製) | This antibody was isolated by affinity chromatography using antigen coupled to agarose beads and conjugated to Horse Radish Peroxidase (HRP). |
| 特記事項 (標識) | Molar enzyme/ antibody protein ratio is 4:1   |
| ポリ/モノ     | ポリクローナル   |
| アイソタイプ    | IgG   |
| 特記事項      | Part of the <b>AbExcel</b> range.   |

#### アプリケーション

**The Abpromise guarantee**      **Abpromise保証は、**次のテスト済みアプリケーションにおけるab97051の使用に適用されます  
アプリケーションノートには、推奨の開始希釈率がありますが、適切な希釈率につきましてはご検討ください。

| アプリケーション | Abreviews  | 特記事項   |
|----------|------------|--|
| ICC      |            | Use at an assay dependent concentration.   |
| IHC-P    |            | 1/200 - 1/5000.  |
| ELISA    |            | 1/10000 - 1/100000.  |
| WB       | ★★★★★ (10) | 1/2000 - 1/20000. Colorimetric: 1/5000 - 1/30000;<br>Chemiluminescent: 1/10000 - 1/50000 |

## 画像



**All lanes** : Anti-Estrogen Receptor alpha antibody [E115] - ChIP  
Grade ([ab32063](#)) at 1/1000 dilution

**Lane 1** : Rat pituitary whole tissue lysate

**Lane 2** : Mouse pituitary whole tissue lysate

Lysates/proteins at 20 µg per lane.

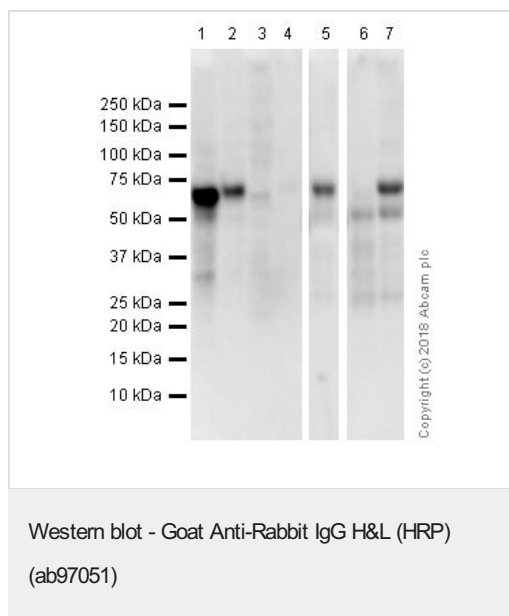
### Secondary

**All lanes** : Goat Anti-Rabbit IgG H&L (HRP) (ab97051) at 1/20000 dilution

**Exposure time**: 1st lane: 85 seconds

2nd lane: 32 seconds

Blocking and diluting buffer: 5% NFDM/TBST



**All lanes :** Anti-Estrogen Receptor alpha antibody [E115] - ChIP Grade (**ab32063**) at 1/1000 dilution

**Lane 1 :** MCF7 (Human breast adenocarcinoma epithelial cell).

Whole cell lysates

**Lane 2 :** T-47D (human mammary gland ductal carcinoma epithelial cell). Whole cell lysates

**Lane 3 :** MDA-MB231 (Human breast adenocarcinoma epithelial cell) Whole cell lysates (Negative control)

**Lane 4 :** HepG2 (Human hepatocellular carcinoma epithelial cell) Whole cell lysates (Negative control)

**Lane 5 :** Human uterus whole tissue lysate

**Lane 6 :** Human ovary whole tissue lysate

**Lane 7 :** Human ovary cancer whole tissue lysate

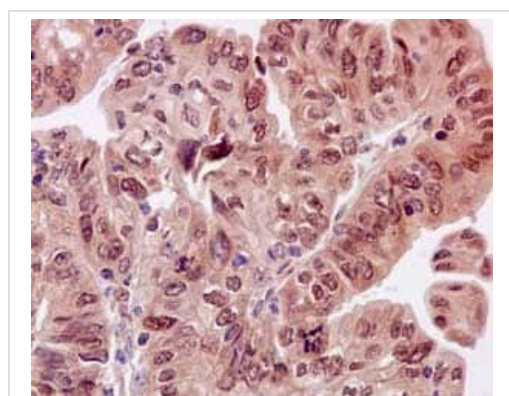
Lysates/proteins at 20 µg per lane.

## Secondary

**All lanes :** Goat Anti-Rabbit IgG H&L (HRP) (ab97051) at 1/20000 dilution

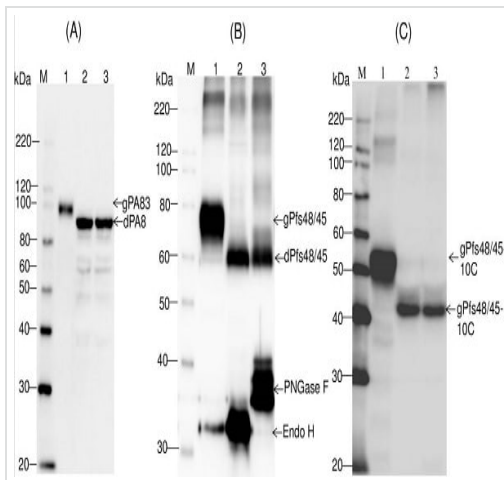
**Exposure time:** 50 seconds

Blocking and diluting buffer: 5% NFDM/TBST.



Immunohistochemical staining of paraffin embedded human endometrial carcinoma with purified **ab32063** at a working dilution of 1 in 200. The secondary antibody used is ab97051, a HRP goat anti-rabbit IgG (H+L), at 1/500. The sample is counter-stained with hematoxylin. Antigen retrieval was performed using Tris-EDTA buffer, pH 9.0.

Immunohistochemistry (Formalin/PFA-fixed paraffin-embedded sections) - Goat Anti-Rabbit IgG H&L (HRP) (ab97051)



Western blot - Goat Anti-Rabbit IgG H&L (HRP) (ab97051)

Mamedov et al PLoS One. 2017 Aug 21;12(8):e0183589. doi: 10.1371/journal.pone.0183589. eCollection 2017. Fig 4. Reproduced under the Creative Commons license <http://creativecommons.org/licenses/by/4.0/>

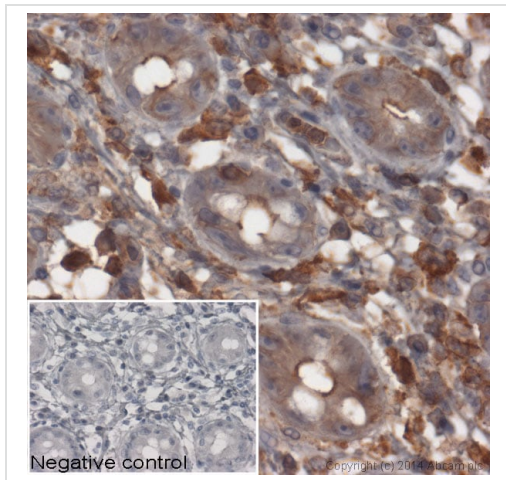
### Western blot analysis of co-expression *Bacillus anthracis* PA83 (A), Pfs48/45 (B) and Pfs48/45-10C with bacterial Endo H or PNGase F in *N. benthamiana* plants.

(A) Western blot analysis of co-expression of PA83. Lanes: 1- *N. benthamiana* plant was infiltrated with pBI-PA83 construct, for the production of glycosylated PA83, 2,3- *N. benthamiana* plants were infiltrated with combinations of the pBI-Endo H/pBI-PA83 or pBI-PNGase F/pBI-PA83 constructs, for the production of Endo H (2) or PNGase F (3) deglycosylated PA83 proteins.

(B) Western blot analysis of co-expression of Pfs48/45. Lanes: 1- *N. benthamiana* plant was infiltrated with pEAQ-Pfs48/45 construct for the production of glycosylated Pfs48/45; 2,3- *N. benthamiana* plants were infiltrated with combinations of the pBI-Endo H/pEAQ-Pfs48/45 or pBI-PNGase F/pEAQ-Pfs48/45 constructs for the production of Endo H (2) and PNGase F (3) deglycosylated Pfs48/45 proteins.

(C) Western blot analysis of co-expression of Pfs48/45-10C. Lanes: 1- *N. benthamiana* plant was infiltrated with pEAQ-Pfs48/45-10C construct for the production of glycosylated Pfs48/45-10C; 2,3- *N. benthamiana* plants were infiltrated with combinations of the pBI-Endo H/pEAQ-Pfs48/45 or pBI-PNGase F/pEAQ-Pfs48/45 constructs for the production of Endo H (2) and PNGase F (3) deglycosylated Pfs48/45-10C proteins. gPA83- glycosylated PA83; dPA83- deglycosylated PA83; gPfs48/45: glycosylated Pfs48/45; dPfs48/45: deglycosylated Pfs48/45; gPfs48/45-10C: glycosylated Pfs48/45-10C; dPfs48/45-10C: deglycosylated Pfs48/45-10C.

M: MagicMark XP Western Protein Standard. PA83 proteins were detected using the anti-Bacillus anthracis protective antigen antibody BAP0101 (Cat. No. **ab1988**, Abcam); Pfs48/45, Endo H or PNGase F proteins were detected using the anti-FLAG antibody. Pfs48/45-10C protein was detected using the purified anti-His Tag antibody.



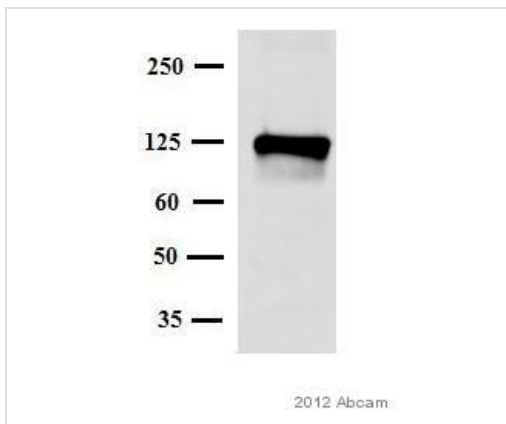
Immunohistochemistry (Formalin/PFA-fixed paraffin-embedded sections) - Goat Anti-Rabbit IgG H&L (HRP) (ab97051)

IHC image of beta Actin staining in normal human colon, formalin-fixed and paraffin-embedded tissue\*.

The section was pre-treated using pressure cooker heat mediated antigen retrieval with sodium citrate buffer (pH 6) for 30mins. The section was incubated with **ab8227**, 3 µg/ml overnight at +4°C. An HRP-conjugated secondary (ab97051, 1/2000 dilution) was used for 1hr at room temperature. The section was counterstained with hematoxylin and mounted with DPX.

The inset **negative control** image is secondary-only at 1/500 dilution.

\*Tissue obtained from the Human Research Tissue Bank, supported by the NIHR Cambridge Biomedical Research Centre



Western blot - Goat Anti-Rabbit IgG H&L (HRP) (ab97051)

This image is courtesy of an anonymous Abreview.

Anti-LAMP2 antibody (**ab37024**) at 1/1000 dilution + Mouse brain whole tissue lysate at 30 µg

### Secondary

Goat Anti-Rabbit IgG H&L (HRP) (ab97051) at 1/5000 dilution

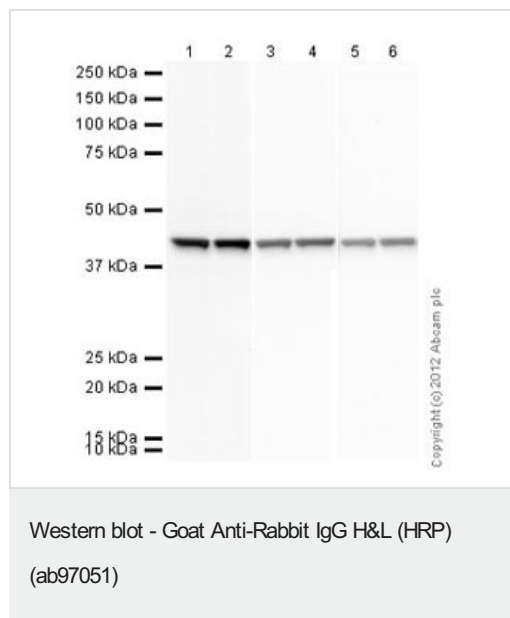
Developed using the ECL technique.

Performed under reducing conditions.

**Exposure time:** 1 minute

10 % gel. Blocked with 5% BSA for 2 hours at 25°C.

Incubated with the primary antibody for 1 hour in TBS-tween at 25°C.



**All lanes :** Anti-beta Actin antibody ([ab8227](#)) at 1 µg/ml

**All lanes :** HeLa (Human epithelial carcinoma cell line) Whole Cell Lysate

Lysates/proteins at 10 µg per lane.

#### Secondary

**Lanes 1-2 :** Rabbit polyclonal to GNAT2 ([ab97501](#)) at 1/2000 dilution

**Lanes 3-4 :** Goat Anti-Rabbit IgG H&L (HRP) ([ab97051](#)) at 1/10000 dilution

**Lanes 5-6 :** Goat Anti-Rabbit IgG H&L (HRP) ([ab97051](#)) at 1/20000 dilution

Developed using the ECL technique.

Performed under reducing conditions.

**Exposure time:** 10 seconds

**Please note:** All products are "FOR RESEARCH USE ONLY. NOT FOR USE IN DIAGNOSTIC PROCEDURES"

#### Our Abpromise to you: Quality guaranteed and expert technical support

- Replacement or refund for products not performing as stated on the datasheet
- Valid for 12 months from date of delivery
- Response to your inquiry within 24 hours
- We provide support in Chinese, English, French, German, Japanese and Spanish
- Extensive multi-media technical resources to help you
- We investigate all quality concerns to ensure our products perform to the highest standards

If the product does not perform as described on this datasheet, we will offer a refund or replacement. For full details of the Abpromise, please visit <https://www.abcam.co.jp/abpromise> or contact our technical team.

#### Terms and conditions

- Guarantee only valid for products bought direct from Abcam or one of our authorized distributors