

Goat Anti-Mouse IgG2b heavy chain (HRP) ab97250

[34 References](#) [画像数 1](#)

製品の概要

| | |
|----------|---|
| 製品名 | Goat Anti-Mouse IgG2b heavy chain (HRP) |
| 由来種 | Goat |
| ターゲット生物種 | Mouse |
| 特異性 | By immunoelectrophoresis and ELISA this antibody reacts specifically with mouse IgG2b. Cross reactivity with other immunoglobulins is less than 2%. |
| アプリケーション | 適用あり: ICC, IHC-P, ELISA, WB |
| 標識 | HRP |

製品の特性

| | |
|----------|--|
| 製品の状態 | Liquid |
| 保存方法 | Shipped at 4°C. Store at +4°C. |
| バッファー | pH: 6.8 Constituents: 0.2% BSA, 0.05% CMIT/MIT based preservative |
| 精製度 | Immunogen affinity purified |
| 特記事項(精製) | Antiserum was solid phase adsorbed to ensure subclass specificity. This antibody was isolated by affinity chromatography using antigen coupled to agarose beads and conjugated to Horse Radish Peroxidase (HRP). |
| 特記事項(標識) | Molar enzyme/ antibody protein ratio is 4:1 |
| ポリモノ | ポリクローナル |
| アイソタイプ | IgG |

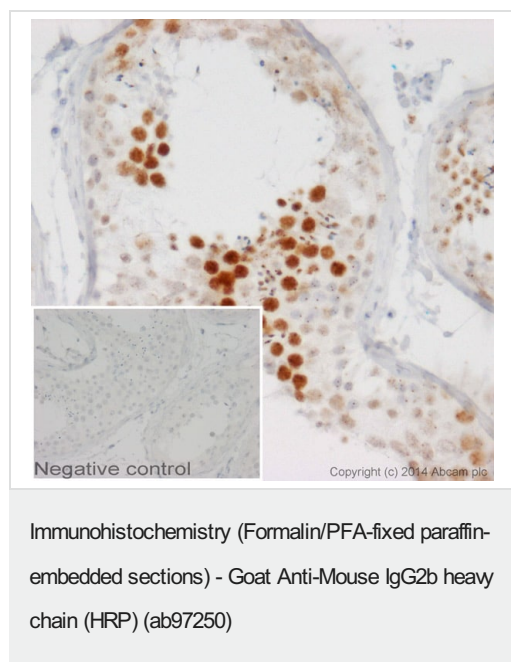
アプリケーション

The Abpromise guarantee **Abpromise保証は、次のテスト済みアプリケーションにおけるab97250の使用に適用されます**
 アプリケーションノートには、推奨の開始希釈率がありますが、適切な希釈率につきましてはご検討ください。

| アプリケーション | Abreviews | 特記事項 |
|----------|-----------|-------------------------------------|
| ICC | | Use at an assay dependent dilution. |

| アプリケーション | Abreviews | 特記事項 |
|----------|-----------|--|
| IHC-P | | 1/200 - 1/2000. |
| ELISA | | 1/10000 - 1/100000. Similar dilution to primary antibody. |
| WB | | 1/2000 - 1/25000. WB-Colorimetric 1/2000 - 1/20000; WB-Chemiluminescent 1/5000 - 1/25000 |

画像



IHC image of Coilin staining in human testis formalin fixed paraffin embedded tissue section*. The section was pre-treated using pressure cooker heat mediated antigen retrieval with sodium citrate buffer (pH6) for 30mins. The section was incubated with **ab87913**, 3µg/ml overnight at +4°C. An HRP-conjugated secondary (ab97250, 1/500 dilution) was used for 1hr at room temperature. The section was counterstained with haematoxylin and mounted with DPX.

The inset negative control image is taken from an identical assay without primary antibody.

*Tissue obtained from the Human Research Tissue Bank, supported by the NIHR Cambridge Biomedical Research Centre

Please note: All products are "FOR RESEARCH USE ONLY. NOT FOR USE IN DIAGNOSTIC PROCEDURES"

Our Abpromise to you: Quality guaranteed and expert technical support

- Replacement or refund for products not performing as stated on the datasheet
- Valid for 12 months from date of delivery
- Response to your inquiry within 24 hours
- We provide support in Chinese, English, French, German, Japanese and Spanish
- Extensive multi-media technical resources to help you
- We investigate all quality concerns to ensure our products perform to the highest standards

If the product does not perform as described on this datasheet, we will offer a refund or replacement. For full details of the Abpromise, please visit <https://www.abcam.co.jp/abpromise> or contact our technical team.

Terms and conditions

- Guarantee only valid for products bought direct from Abcam or one of our authorized distributors