

Goat Anti-Mouse IgG H&L (HRP) ab205719

★★★★★ [4 Abreviews](#) [1199 References](#) [画像数 8](#)

製品の概要

製品名	Goat Anti-Mouse IgG H&L (HRP)
由来種	Goat
ターゲット生物種	Mouse
特異性	The antibody used for conjugation reacts with mouse immunoglobulins of all classes. Cross-reactions as determined by ELISA for the unconjugated antibody (ab182017): Chicken IgY, less than 2%. Human IgG, less than 6%. Rabbit IgG, less than 7%. Rat IgG, less than 47%.
アプリケーション	適用あり: WB, IP, ELISA, IHC-P
免疫原	The details of the immunogen for this antibody are not available.
標識	HRP

製品の特性

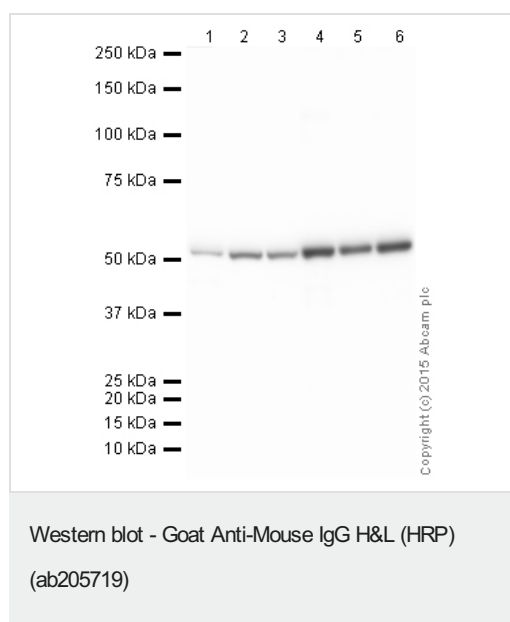
製品の状態	Liquid
保存方法	Shipped at 4°C. Store at +4°C short term (1-2 weeks). Upon delivery aliquot. Store at -20°C. Avoid freeze / thaw cycle. Store In the Dark.
バッファー	pH: 7.40 Preservative: 0.1% Proclin 300 Solution Constituents: PBS, 1% BSA, 30% Glycerol (glycerin, glycerine)
精製度	Immunogen affinity purified
特記事項 (精製)	This antibody was isolated by affinity chromatography using antigen coupled to agarose beads and conjugated to Horse Radish Peroxidase (HRP).
ポリ/モノ	ポリクローナル
アイソタイプ	IgG

アプリケーション

The Abpromise guarantee **Abpromise保証は、** 次のテスト済みアプリケーションにおけるab205719の使用に適用されます
アプリケーションノートには、推奨の開始希釈率がありますが、適切な希釈率につきましてはご検討ください。

アプリケーション	Abreviews	特記事項
WB	★★★★★ (4)	1/2000 - 1/20000.
IP		Use at an assay dependent concentration.
ELISA		Use at an assay dependent concentration.
IHC-P		1/2000 - 1/20000.

画像



All lanes : Anti-alpha Tubulin antibody [DM1A] - Loading Control ([ab7291](#)) at 1 µg/ml

Lane 1 : Liver (Human) Tissue Lysate

Lane 2 : Liver (Mouse) Tissue Lysate

Lane 3 : Liver (Rat) Tissue Lysate

Lane 4 : HeLa (Human epithelial carcinoma cell line) Whole Cell Lysate

Lane 5 : NIH 3T3 (Mouse embryonic fibroblast cell line) Whole Cell Lysate

Lane 6 : PC12 (Rat adrenal pheochromocytoma cell line) Whole Cell Lysate

Lysates/proteins at 10 µg per lane.

Secondary

All lanes : Goat Anti-Mouse IgG H&L (HRP) (ab205719) at 1/5000 dilution

Developed using the ECL technique.

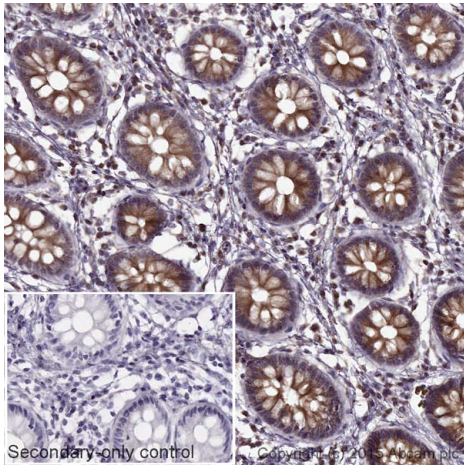
Performed under reducing conditions.

Observed band size: 52 kDa

Exposure time: 5 seconds

This blot was produced using a 4-12% Bis-tris gel under the MOPS buffer system. The gel was run at 200V for 50 minutes before being transferred onto a Nitrocellulose membrane at 30V for 70 minutes.

The membrane was then blocked for an hour using 2% Bovine Serum Albumin before being incubated with **ab7291** overnight at 4°C. Antibody binding was detected using ab205719, and visualised using ECL development solution **ab133406**.

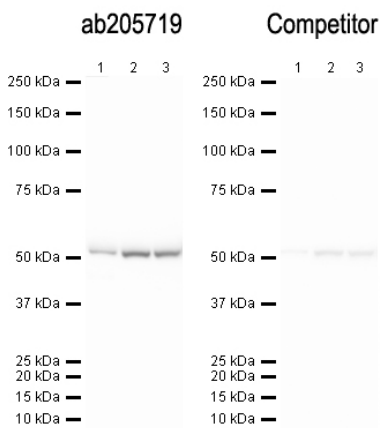


Immunohistochemistry (Formalin/PFA-fixed paraffin-embedded sections) - Goat Anti-Mouse IgG H&L (HRP) (ab205719)

IHC image of alpha tubulin staining in a section of formalin-fixed paraffin-embedded normal human colon tissue*. The section was pre-treated using pressure cooker heat mediated antigen retrieval with sodium citrate buffer (pH6) for 30mins, and incubated overnight at +4°C with **ab7291** at 1/1000 dilution. An HRP-conjugated secondary (Ab205719, 1/10000 dilution) was used to detect the primary for 1hr at room temperature. DAB was used as the chromogen (**ab103723**), diluted 1/100 and incubated for 10min at room temperature. The section was counterstained with haematoxylin and mounted with DPX. The inset negative control image is taken from an identical assay without primary antibody.

For other IHC staining systems (automated and non-automated) customers should optimize variable parameters such as antigen retrieval conditions, primary antibody concentration and antibody incubation times.

*Tissue obtained from the Human Research Tissue Bank, supported by the NIHR Cambridge Biomedical Research Centre



Western blot - Goat Anti-Mouse IgG H&L (HRP) (ab205719)

All lanes : Anti-alpha Tubulin antibody [DM1A] - Loading Control (**ab7291**) at 1 µg/ml

Lane 1 : Liver (Human) Tissue Lysate

Lane 2 : Liver (Mouse) Tissue Lysate

Lane 3 : Liver (Rat) Tissue Lysate

Lysates/proteins at 10 µg per lane.

Secondary

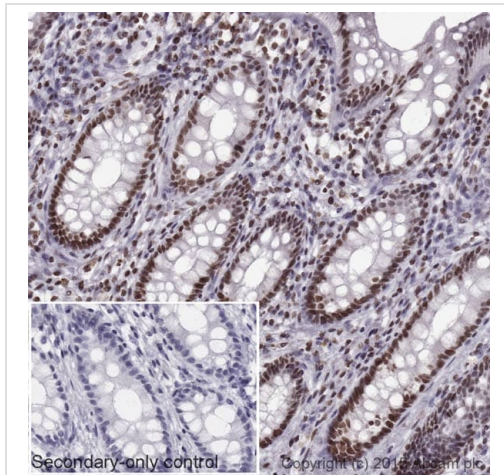
All lanes : ab205719 (Left Image) at 1/5000 and a competitor secondary (Right Image) at 1/5000. Notice the decreased signal of the competitor product.

Performed under reducing conditions.

Observed band size: 52 kDa

Exposure time: 5 seconds

This blot was produced using a 4-12% Bis-tris gel under the MOPS buffer system. The gel was run at 200V for 50 minutes before being transferred onto a Nitrocellulose membrane at 30V for 70 minutes. The membrane was then blocked for an hour using 2% Bovine Serum Albumin before being incubated with **ab7291** overnight at 4°C. Antibody binding was detected using ab205719 (Left Image) and a competitor secondary (Right Image), and visualised using ECL development solution **ab133406**.

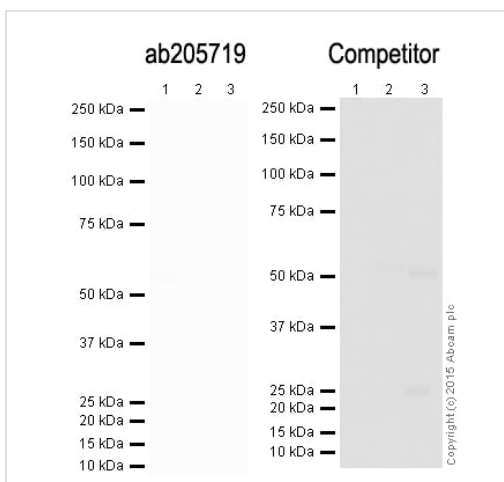


Immunohistochemistry (Formalin/PFA-fixed paraffin-embedded sections) - Goat Anti-Mouse IgG H&L (HRP) (ab205719)

IHC image of histone H4 staining in a section of formalin-fixed paraffin-embedded normal human colon tissue*. The section was pre-treated using pressure cooker heat mediated antigen retrieval with sodium citrate buffer (pH6) for 30mins, and incubated overnight at +4°C with **ab31830** at 1/1000 dilution. An HRP-conjugated secondary (Ab205719, 1/10000 dilution) was used to detect the primary for 1hr at room temperature. DAB was used as the chromogen (**ab103723**), diluted 1/100 and incubated for 10min at room temperature. The section was counterstained with haematoxylin and mounted with DPX. The inset negative control image is taken from an identical assay without primary antibody.

For other IHC staining systems (automated and non-automated) customers should optimize variable parameters such as antigen retrieval conditions, primary antibody concentration and antibody incubation times.

*Tissue obtained from the Human Research Tissue Bank, supported by the NIHR Cambridge Biomedical Research Centre



Western blot - Goat Anti-Mouse IgG H&L (HRP) (ab205719)

All lanes : No Primary Antibody

Lane 1 : Liver (Human) Tissue Lysate

Lane 2 : Liver (Mouse) Tissue Lysate

Lane 3 : Liver (Rat) Tissue Lysate

Lysates/proteins at 10 µg per lane.

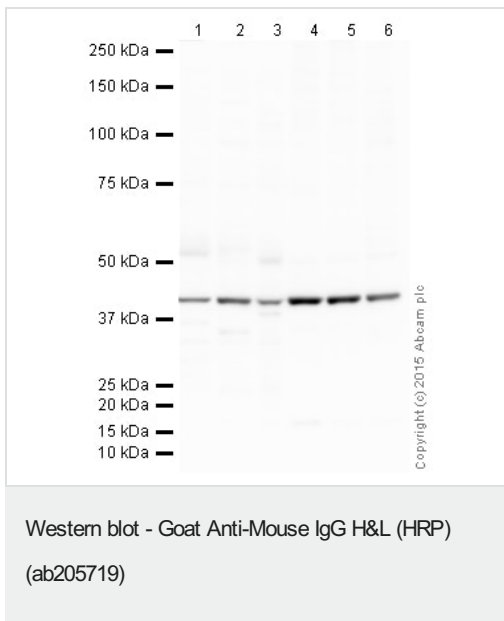
Secondary

All lanes : ab205719 (Left Image) 1/2000 and a competitor secondary (Right Image) 1/2000. Notice the increased background of the competitor product.

Performed under reducing conditions.

Exposure time: 10 seconds

This blot was produced using a 4-12% Bis-tris gel under the MOPS buffer system. The gel was run at 200V for 50 minutes before being transferred onto a Nitrocellulose membrane at 30V for 70 minutes. The membrane was incubated overnight with 2% Bovine Serum Albumin at 4°C. Any non-specific background binding was assessed by incubating the membrane with ab205719 (Left Image) and a competitor secondary (Right Image), and visualised using ECL development solution [ab133406](#).



All lanes : Anti-beta Actin antibody [mAbcam 8226] - Loading Control ([ab8226](#)) at 1 µg/ml

Lane 1 : Liver (Human) Tissue Lysate

Lane 2 : Liver (Mouse) Tissue Lysate

Lane 3 : Liver (Rat) Tissue Lysate

Lane 4 : HeLa (Human epithelial carcinoma cell line) Whole Cell Lysate

Lane 5 : NIH 3T3 (Mouse embryonic fibroblast cell line) Whole Cell Lysate

Lane 6 : PC12 (Rat adrenal pheochromocytoma cell line) Whole Cell Lysate

Lysates/proteins at 10 µg per lane.

Secondary

All lanes : Goat Anti-Mouse IgG H&L (HRP) (ab205719) at 1/5000 dilution

Developed using the ECL technique.

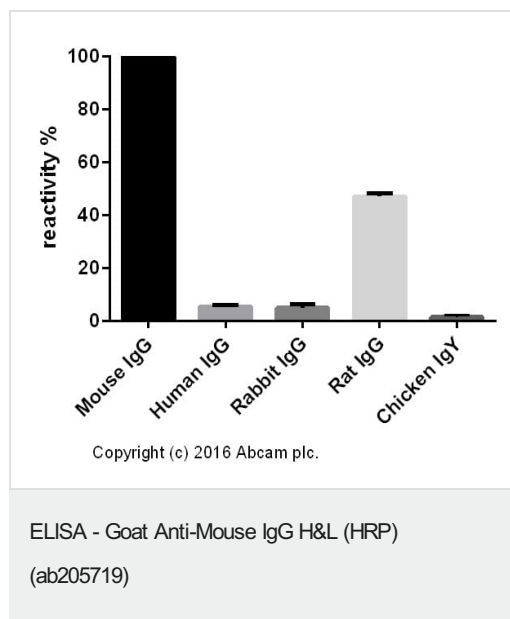
Performed under reducing conditions.

Observed band size: 42 kDa

Exposure time: 10 seconds

This blot was produced using a 4-12% Bis-tris gel under the MOPS buffer system. The gel was run at 200V for 50 minutes before being transferred onto a Nitrocellulose membrane at 30V for 70 minutes.

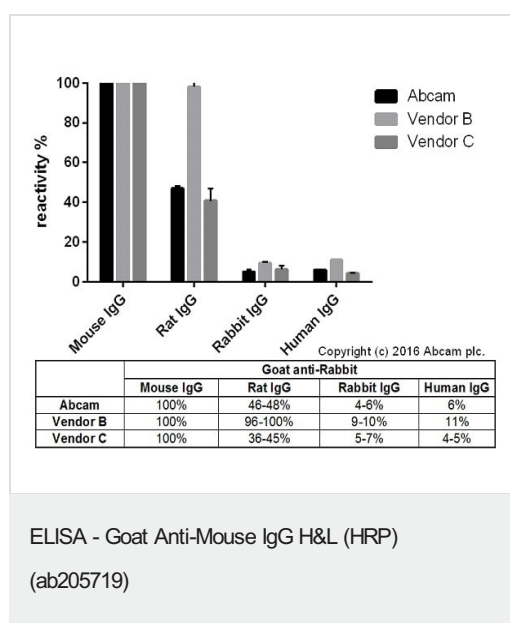
The membrane was then blocked for an hour using 2% Bovine Serum Albumin before being incubated with **ab8226** overnight at 4°C. Antibody binding was detected using ab205719, and visualised using ECL development solution **ab133406**.



Cross-reactivity of the polyclonal secondary antibody **ab182017** was tested using a sandwich ELISA approach. The wells were coated with the indicated IgG standards at 1 µg/ml (50 µl/well) and incubated overnight at 4°C, followed by a 5% BSA blocking step for 2h at RT. **ab182017** was then added starting at 1 µg/ml and gradually diluted 1/4 (50 µl/well), followed by incubation for 2h. For the detection Donkey anti-Goat IgG H&L (HRP) (**ab6885**) was used at 1/10,000 dilution (50 µl/well), followed by incubation for 1h at RT.

For the batch tested, ab182017 showed a cross-reactivity below 2% towards Chicken IgY, 6% towards Human IgG, 7% towards Rabbit IgG and 47% towards Rat IgG.

This data was developed using the unconjugated antibody (**ab182017**).



Cross-reactivity of Goat anti-Mouse IgG H&L (**ab182017**) and Goat anti-Mouse IgG H&L obtained from two different vendors was tested using a sandwich ELISA approach. The wells were coated with the indicated IgG standards (Rabbit, Human, Mouse and Rat) at 1 µg/ml (50 µl/well) and incubated overnight at 4°C, followed by a 5% BSA blocking step for 2h at RT. Secondary antibodies were then added starting at 1 µg/ml and gradually diluted 1/4 (50 µl/well), followed by incubation for 2h. For the detection Donkey anti-Goat IgG H&L (HRP) (**ab6885**) was used at 1/10,000 dilution (50 µl/well), followed by incubation for 1h at RT. This data is from a representative dilution.

This data was developed using the unconjugated antibody (**ab182017**).

Please note: All products are "FOR RESEARCH USE ONLY. NOT FOR USE IN DIAGNOSTIC PROCEDURES"

Our Abpromise to you: Quality guaranteed and expert technical support

- Replacement or refund for products not performing as stated on the datasheet
- Valid for 12 months from date of delivery
- Response to your inquiry within 24 hours
- We provide support in Chinese, English, French, German, Japanese and Spanish

- Extensive multi-media technical resources to help you
- We investigate all quality concerns to ensure our products perform to the highest standards

If the product does not perform as described on this datasheet, we will offer a refund or replacement. For full details of the Abpromise, please visit <https://www.abcam.co.jp/abpromise> or contact our technical team.

Terms and conditions

- Guarantee only valid for products bought direct from Abcam or one of our authorized distributors