

Donkey Anti-Sheep IgG H&L (HRP) ab6900

[24 References](#) [画像数 3](#)

製品の概要

製品名	Donkey Anti-Sheep IgG H&L (HRP)
由来種	Donkey
ターゲット生物種	Sheep
アプリケーション	適用あり: ICC/IF, IHC-Fr, IHC-P, WB, ELISA, Immunomicroscopy, Dot blot
免疫原	Full length native Sheep IgG (purified).
標識	HRP

製品の特性

製品の状態	Liquid
保存方法	Shipped at 4°C. Store at +4°C.
バッファー	pH: 6.50 Preservative: 0.01% Gentamicin sulphate Constituents: 0.42% Tripotassium orthophosphate, 0.87% Sodium chloride, 1% BSA
精製度	Affinity purified
特記事項 (精製)	This product was prepared from monospecific antiserum by immunoaffinity chromatography using Sheep IgG coupled to agarose beads followed by solid phase adsorption(s) to remove any unwanted reactivities
特記事項 (標識)	Horseradish Peroxidase (HRP)
ポリモノ	ポリクローナル
アイソタイプ	IgG

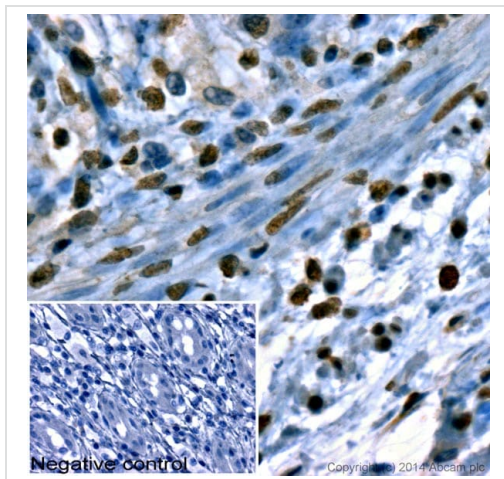
アプリケーション

The Abpromise guarantee Abpromise保証は、次のテスト済みアプリケーションにおけるab6900の使用に適用されます
アプリケーションノートには、推奨の開始希釈率がありますが、適切な希釈率につきましてはご検討ください。

アプリケーション	Abreviews	特記事項
ICC/IF		1/1000 - 1/5000.

アプリケーション	Abreviews	特記事項
IHC-Fr		1/1000 - 1/5000.
IHC-P		1/1000 - 1/5000.
WB		1/3000 - 1/15000.
ELISA		1/150000.
Immunomicroscopy		Use at an assay dependent dilution.
Dot blot		Use at an assay dependent dilution.

画像



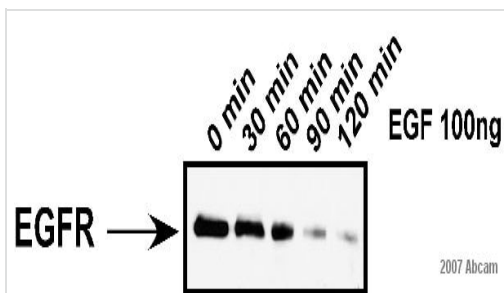
IHC image of Histone H3 staining in human normal colon formalin fixed paraffin embedded tissue section*.

The section was pre-treated using pressure cooker heat mediated antigen retrieval with sodium citrate buffer (pH 6) for 30 mins. The section was incubated with [ab128012](#), 10 µg/ml overnight at +4°C. An HRP-conjugated secondary (ab6900, 1/1000 dilution) was used for 1 hr at room temperature. The section was counterstained with hematoxylin and mounted with DPX.

The inset **negative control** image is taken from an identical assay without primary antibody.

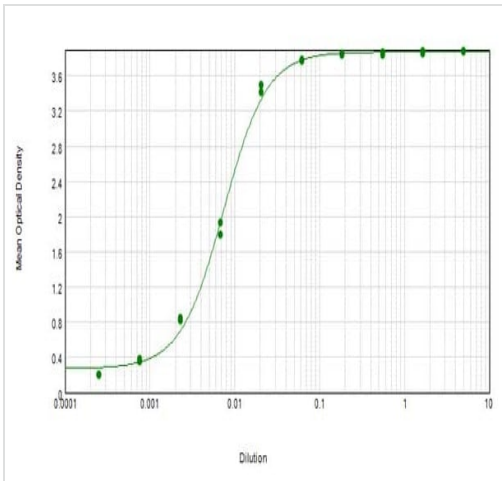
*Tissue obtained from the Human Research Tissue Bank, supported by the NIHR Cambridge Biomedical Research Centre

Immunohistochemistry (Formalin/PFA-fixed paraffin-embedded sections) - Donkey Anti-Sheep IgG H&L (HRP) (ab6900)



ab6900 was used at dilution 1/20000 with the primary antibody [ab30524](#) in WB. See the review on [ab30524](#).

Western blot - Donkey Anti-Sheep IgG H&L (HRP) (ab6900)



ELISA - Donkey Anti-Sheep IgG H&L (HRP)
(ab6900)

ELISA results of purified ab6900 tested against purified Sheep IgG.

Each well was coated in duplicate with 1.0 µg of Sheep IgG. The starting dilution of antibody was 5 µg/ml and the X-axis represents the Log₁₀ of a 3-fold dilution. This titration is a 4-parameter curve fit where the IC₅₀ is defined as the titer of the antibody. Assay performed using 3% fish gelatin as blocking buffer and TMB substrate.

Please note: All products are "FOR RESEARCH USE ONLY. NOT FOR USE IN DIAGNOSTIC PROCEDURES"

Our Abpromise to you: Quality guaranteed and expert technical support

- Replacement or refund for products not performing as stated on the datasheet
- Valid for 12 months from date of delivery
- Response to your inquiry within 24 hours
- We provide support in Chinese, English, French, German, Japanese and Spanish
- Extensive multi-media technical resources to help you
- We investigate all quality concerns to ensure our products perform to the highest standards

If the product does not perform as described on this datasheet, we will offer a refund or replacement. For full details of the Abpromise, please visit <https://www.abcam.co.jp/abpromise> or contact our technical team.

Terms and conditions

- Guarantee only valid for products bought direct from Abcam or one of our authorized distributors