

### Donkey Anti-Goat IgG H&L (PE) preadsorbed ab7004

★★★★★ [1 Abreviews](#) [8 References](#) [画像数 2](#)

#### 製品の概要

|          |   |
|----------|---|
| 製品名      | Donkey Anti-Goat IgG H&L (PE) preadsorbed   |
| 由来種      | Donkey  |
| ターゲット生物種 | Goat  |
| アプリケーション | <b>適用あり:</b> ICC/IF, IHC-P, IHC-Fr, Immunomicroscopy, Flow Cyt                              |
| 吸着処理血清   | Chicken, Guinea pig, Hamster, Horse, Human, Mouse, Rabbit, Rat <a href="#">more details</a> |
| 免疫原      | Goat IgG whole molecule   |
| 標識       | PE. Ex: 488nm, Em: 575nm  |

#### 製品の特性

|           |   |
|-----------|---|
| 製品の状態     | Liquid  |
| 保存方法      | Shipped at 4°C. Store at +4°C.  |
| バッファー     | pH: 6.50<br>Preservative: 0.01% Sodium azide<br>Constituents: 0.878% Sodium chloride, 1% BSA, 0.424% Tripotassium orthophosphate  |
| 精製度       | Immunogen affinity purified   |
| 特記事項 (精製) | Prepared from monospecific antiserum by immunoaffinity chromatography using Goat IgG coupled to agarose beads followed by solid phase adsorption(s) to remove any unwanted reactivities, pepsin digestion and chromatographic separation                |
| 特記事項 (標識) | R-Phycoerythrin (R-PE) Molecular Weight 240,000 daltons) Absorption Wavelength: 488 nm<br>Emission Wavelength: 575 nm OD <sub>566nm</sub> /OD <sub>280nm</sub> : 2.8  |
| ポリ/モノ     | ポリクローナル   |
| アイソタイプ    | IgG   |
| 特記事項      | Can be used in immunomicroscopy and flow cytometry or FACS analysis as well as other antibody based fluorescent assays requiring extremely low background levels, absence of F(c) mediated binding, lot-to-lot consistency, high titer and specificity. |

#### アプリケーション

## The Abpromise guarantee

**Abpromise保証は、次のテスト済みアプリケーションにおけるab7004の使用に適用されます**

アプリケーションノートには、推奨の開始希釈率がありますが、適切な希釈率につきましてはご検討ください。

| アプリケーション         | Abreviews | 特記事項   |
|------------------|-----------|--|
| ICC/IF           |           | 1/100 - 1/250.   |
| IHC-P            |           | Use at an assay dependent dilution.  |
| IHC-Fr           |           | Use at an assay dependent dilution.  |
| Immunomicroscopy |           | Use at an assay dependent dilution.<br>As a general guideline, dilutions of 1/50 to 1/200 should be suitable for most applications.  |
| Flow Cyt         | ★★★★★ (1) | 1/100 - 1/250. The maximum amount of reagent required to stain $1 \times 10^6$ cells in flow cytometry is approximately 1.0µg of antibody conjugate. Lesser amounts of reagent may be sufficient for staining. |

## 画像



Dot Blot - Donkey Anti-Goat IgG H&L  
(Phycoerythrin) preadsorbed (ab7004)

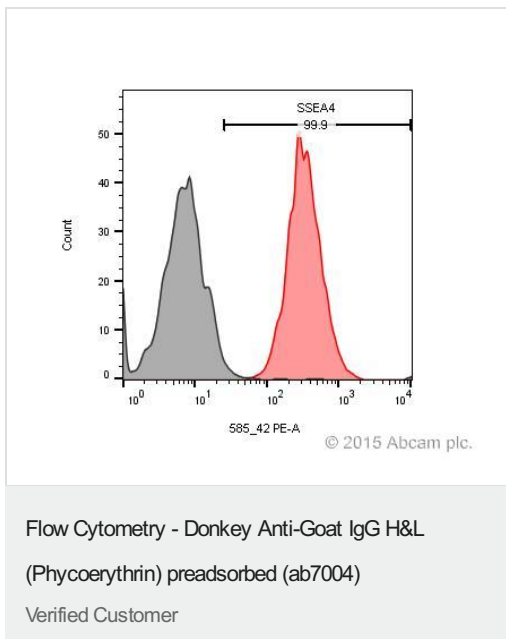
### Dot Blot of ab7004.

Antigen: Goat IgG.

Load: 100 ng, 33.3 ng, 11.1 ng, 3.7 ng, or 1.23 ng as indicated.

Secondary antibody: ab7004 at 1:1,000 for 60 min at RT.

Block: Blocking Buffer for Fluorescent Western Blotting for 60 min at RT.



Very bright secondary antibody and PE is one of the best if you have a weak antigen. I used this in a perfect pairing with FITC in a FACS experiment to check pluripotency markers in human embryonic stem cells.

**Please note:** All products are "FOR RESEARCH USE ONLY. NOT FOR USE IN DIAGNOSTIC PROCEDURES"

### Our Abpromise to you: Quality guaranteed and expert technical support

- Replacement or refund for products not performing as stated on the datasheet
- Valid for 12 months from date of delivery
- Response to your inquiry within 24 hours
- We provide support in Chinese, English, French, German, Japanese and Spanish
- Extensive multi-media technical resources to help you
- We investigate all quality concerns to ensure our products perform to the highest standards

If the product does not perform as described on this datasheet, we will offer a refund or replacement. For full details of the Abpromise, please visit <https://www.abcam.co.jp/abpromise> or contact our technical team.

### Terms and conditions

- Guarantee only valid for products bought direct from Abcam or one of our authorized distributors