

Fix & Perm / Cell Fixation & Permeabilization Kit (Flow Cytometry) ab185917

6 References [画像数 9](#)

医薬用外劇物

製品の概要

製品名 Fix & Perm / Cell Fixation & Permeabilization Kit (Flow Cytometry)

製品の概要 Fix & Perm / Cell Fixation and Permeabilization Kit ab185917 is used to improve the staining of intracellular markers for flow cytometry. It is used to fix cells in suspension and then to permeabilize the cell membranes. It can be used for both cytoplasmic, mitochondrial and nuclear markers, as well as markers in other cellular organelles.

The reagents allow antibodies access to intracellular structures and leave the morphological scatter characteristics of cells intact. The formulation reduces background staining and allows the simultaneous addition of the permeabilization medium and fluorochrome labeled antibodies.

特記事項

The kit protocol is very simple:

- incubate cells with Fixation Medium for 15 min
- add PBS and spin down cells
- add Permeabilization Medium and antibody to cell pellet
- incubate for 15 min
- wash cells with PBS and analyze

The overwhelming majority of flow cytometry antibodies are suitable for use with this kit (a limited number are sensitive to the fixation step).

アプリケーション

適用あり: Flow Cyt

製品の特性

保存方法

Store at room temperature. Please refer to protocols.

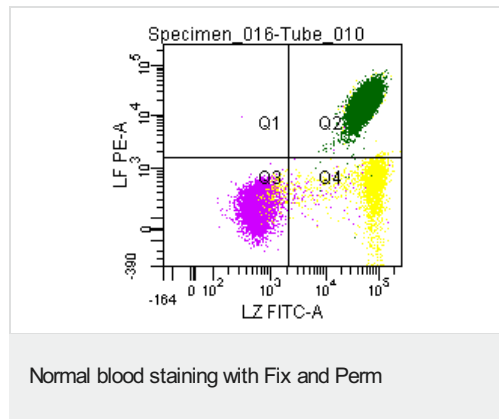
内容	50 tests	200 tests
Fixation Medium (Reagent A)	1 x 5ml	4 x 5ml
Permeabilization Medium (Reagent B)	1 x 5ml	4 x 5ml

アプリケーション

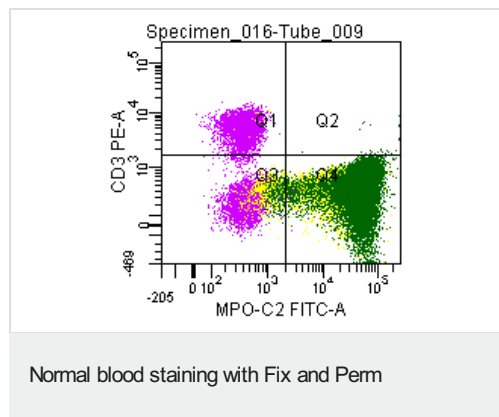
The Abpromise guarantee **Abpromise保証は、次のテスト済みアプリケーションにおけるab185917の使用に適用されます**
 アプリケーションノートには、推奨の開始希釈率がありますが、適切な希釈率につきましてはご検討ください。

アプリケーション	Abreviews	特記事項
Flow Cyt		Use at an assay dependent concentration.

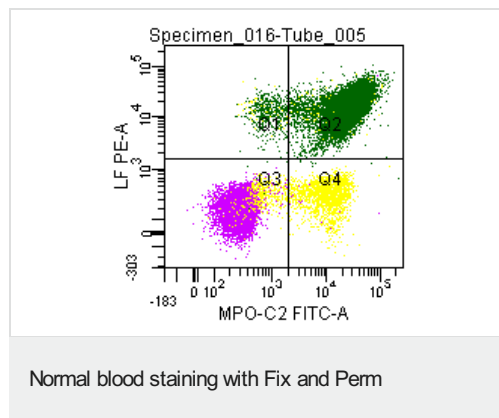
画像



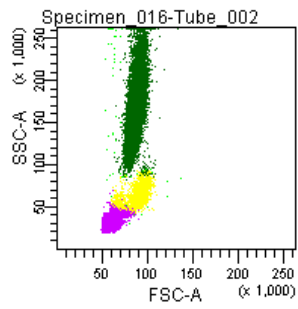
Double labeling of a normal blood sample treated with ab185917, and immunostained for Lactoferrin (PE) and Lysozyme (FITC).



Double labeling of a normal blood sample treated with ab185917, and immunostained for CD3 (PE) and MPO-C2 (FITC).

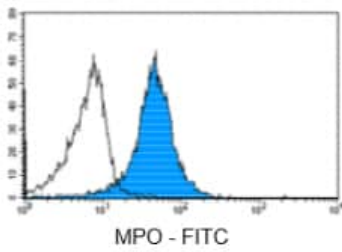


Double labeling of a normal blood sample treated with ab185917, and immunostained for Lactoferrin (PE) and MPO-C2 (FITC).



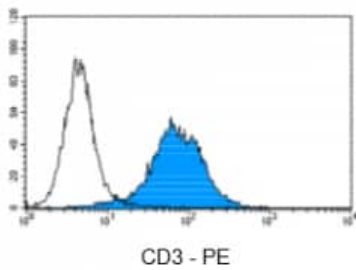
Normal blood staining with Fix and Perm

Forward and side scatter pattern of a normal blood sample treated with ab185917.



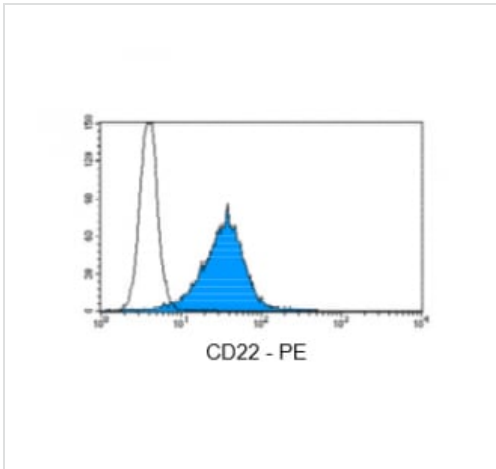
MPO staining with Fix and Perm

Immunostaining with anti MPO-FITC conjugate of undifferentiated leukemia cells of AML type.



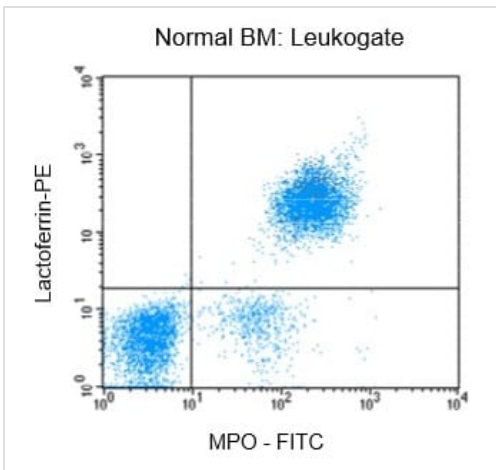
CD3 staining with Fix and Perm

Immunostaining with CD3-PE conjugate of surface CD3-negative undifferentiated leukemia cells of T-ALL type.



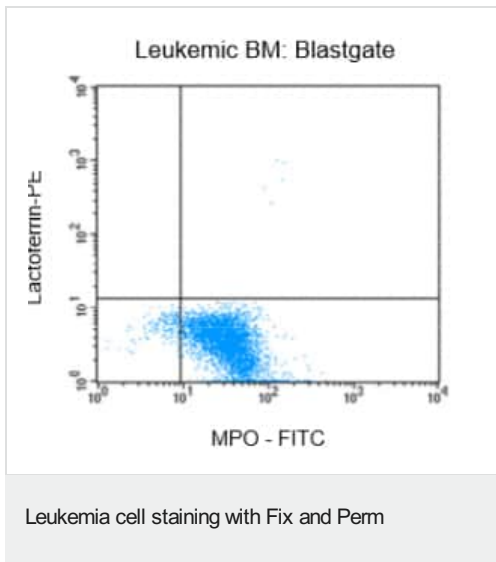
Immunostaining with CD22-PE conjugate of undifferentiated leukemia cells of B-ALL type.

CD22 staining with Fix and Perm



Flow cytometric analysis of normal bone marrow (BM) after fixation and permeabilization using Fix and Perm kit ab185917, followed by immunostaining for the intra-cellular antigens Lactoferrin and MPO.

Intracellular MPO and Lactoferrin staining with Fix and Perm



Flow cytometric analysis of bone marrow (BM) from a leukemia patient after fixation and permeabilization using ab185917, followed by immunostaining for lactoferrin and MPO-C2.

Please note: All products are "FOR RESEARCH USE ONLY. NOT FOR USE IN DIAGNOSTIC PROCEDURES"

Our Abpromise to you: Quality guaranteed and expert technical support

- Replacement or refund for products not performing as stated on the datasheet
- Valid for 12 months from date of delivery
- Response to your inquiry within 24 hours
- We provide support in Chinese, English, French, German, Japanese and Spanish
- Extensive multi-media technical resources to help you
- We investigate all quality concerns to ensure our products perform to the highest standards

If the product does not perform as described on this datasheet, we will offer a refund or replacement. For full details of the Abpromise, please visit <https://www.abcam.co.jp/abpromise> or contact our technical team.

Terms and conditions

- Guarantee only valid for products bought direct from Abcam or one of our authorized distributors