

RPL30 positive control ChIP primer pair ab269262

画像数 3

製品の概要

製品名	RPL30 positive control ChIP primer pair
特記事項	<p>Positive control ChIP-qPCR 5' and 3' primers for RPL30 gene. Use with SYBR green.</p> <p>We recommend these primers as a positive control (based on Abcam's testing) for the histone marks below. They may also be useful for other histone marks.</p> <p>Suitable positive control for:</p> <ul style="list-style-type: none">- Histone H3 di methyl K36- Histone H3 acetyl K23- Histone H3 phospho S10 <p>500pmole of each oligo per unit (lyophilised). HPLC purified, desalted and lyophilised as a sodium salt.</p> <p>Quantity provided is sufficient for approx. 200 reactions based on 2.5pmol of primer per reaction with a final concentration of 100nM in 25µl.</p> <p>Please contact us after purchase if you require the sequence of the oligos.</p>
アプリケーション	適用あり: ChIP

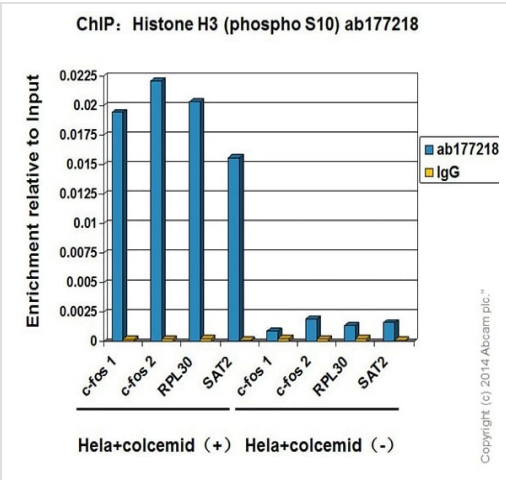
製品の特性

製品の状態	Lyophilized
保存方法	Store at +4°C short term (1-2 weeks). Upon delivery aliquot. Store at -20°C long term. Avoid freeze / thaw cycle.
配列類似性	Belongs to the ribosomal protein L30e family.

アプリケーション

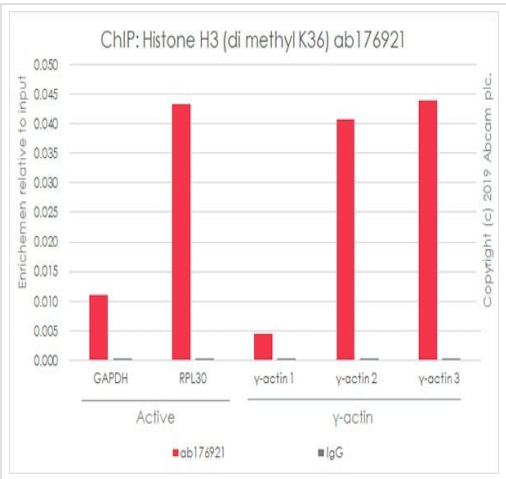
The Abpromise guarantee Abpromise保証は、次のテスト済みアプリケーションにおけるab269262の使用に適用されます
アプリケーションノートには、推奨の開始希釈率がありますが、適切な希釈率につきましてはご検討ください。

アプリケーション	Abreviews	特記事項
ChIP		Use at an assay dependent concentration.



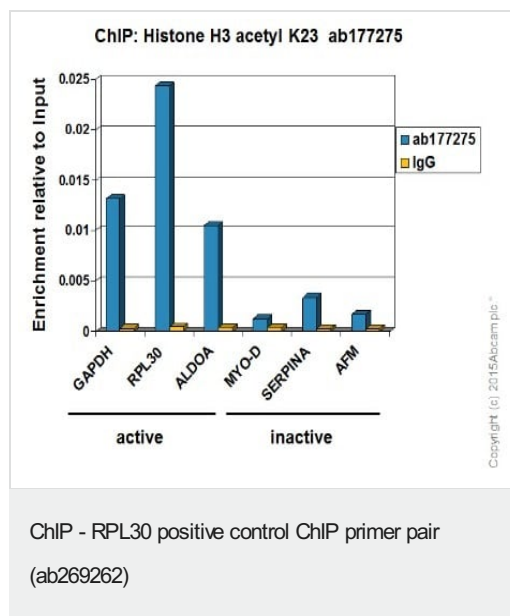
ChIP - RPL30 positive control ChIP primer pair (ab269262)

Chromatin was prepared from HeLa (Human epithelial cells from cervix adenocarcinoma) cells according to the **Abcam X-ChIP protocol**. HeLa (Human epithelial cells from cervix adenocarcinoma) cells were treated with colcemid at 150ng/ml for 20 h. Treated and non-treated cells were fixed with formaldehyde for 10 minutes. The ChIP was performed with 25µg of chromatin, 2µg of **ab177218** (blue), and 20µl of Anti rabbit IgG sepharose beads. 2µg of rabbit normal IgG was added to the beads control (yellow). The immunoprecipitated DNA was quantified by real time PCR (Sybr green approach).



ChIP - RPL30 positive control ChIP primer pair (ab269262)

Chromatin was prepared from HeLa (Human epithelial cell line from cervix adenocarcinoma) cells according to the **Abcam X-ChIP protocol**. Cells were fixed with formaldehyde for 10 minutes. The ChIP was performed with 25µg of chromatin, 2µg of **ab176921** (red), and 20µl of Anti rabbit IgG sepharose beads. 2µg of rabbit normal IgG was added to the beads control (grey). The immunoprecipitated DNA was quantified by real time PCR (Sybr green approach).



Chromatin was prepared from HeLa (Human epithelial cells from cervix adenocarcinoma) cells according to the Abcam X-ChIP protocol. Cells were fixed with formaldehyde for 10 minutes. The ChIP was performed with 25µg of chromatin, 2µg of **ab177275** (blue), and 20µl of Anti Rabbit IgG sepharose beads. 2µg of rabbit normal IgG was added to the beads control (yellow). The immunoprecipitated DNA was quantified by real time PCR (Sybr green approach).

Please note: All products are "FOR RESEARCH USE ONLY. NOT FOR USE IN DIAGNOSTIC PROCEDURES"

Our Abpromise to you: Quality guaranteed and expert technical support

- Replacement or refund for products not performing as stated on the datasheet
- Valid for 12 months from date of delivery
- Response to your inquiry within 24 hours
- We provide support in Chinese, English, French, German, Japanese and Spanish
- Extensive multi-media technical resources to help you
- We investigate all quality concerns to ensure our products perform to the highest standards

If the product does not perform as described on this datasheet, we will offer a refund or replacement. For full details of the Abpromise, please visit <https://www.abcam.co.jp/abpromise> or contact our technical team.

Terms and conditions

- Guarantee only valid for products bought direct from Abcam or one of our authorized distributors