

# Recombinant woodchuck CD80 protein (Active) (Biotin) ab271373

画像数 2

### 製品の詳細

---

製品名	Recombinant woodchuck CD80 protein (Active) (Biotin)
生理活性	Active in a woodchuck CTLA4:CD80 interaction assay.  Buffer is PBS with 0.1% BSA. Blocking buffer is Superblock + 0.05% Tween-20. The coat protein, woodchuck CTLA4 (wCTLA4), was added ON at 4 deg (various concentrations as indicated). Binding reaction initiated with addition of woodchuck B7-1-biotin (wB7-1-biotin) for 2h at RT. Binding was detected using Strep-HRP generated luminescence.
精製度	>= 90 % SDS-PAGE.
発現系	HEK 293 cells
タンパク質長	Protein fragment
Animal free	No
由来	Recombinant
生物種	Woodchuck
予測される分子量	52 kDa including tags
分子量情報	Protein runs at higher MW on SDS-PAGE due to glycosylation.
領域	30 to 237
タグ	Avi tag C-Terminus , Fc tag C-Terminus
配列の追加情報	C-terminal Avi-Tag fused to the Fc-region of Human IgG1.
標識	Biotin

### 特性

---

Our **Abpromise guarantee** covers the use of **ab271373** in the following tested applications.

The application notes include recommended starting dilutions; optimal dilutions/concentrations should be determined by the end user.

アプリケーション	Functional Studies SDS-PAGE
製品の状態	Liquid
備考	Enzymatically biotin-labeled using Avi-tag™ technology

## 前処理および保存

### 保存方法および安定性

Shipped on Dry Ice. Store at -80°C. Avoid freeze / thaw cycle. Store In the Dark.

pH: 7.40

Constituents: 0.13% Sodium phosphate, 0.64% Sodium chloride, 0.02% Potassium chloride, 20% Glycerol (glycerin, glycerine)

This product is an active protein and may elicit a biological response in vivo, handle with caution.

## 関連情報

### 機能

Involved in the costimulatory signal essential for T-lymphocyte activation. T-cell proliferation and cytokine production is induced by the binding of CD28 or CTLA-4 to this receptor.

### 組織特異性

Expressed on activated B-cells, macrophages and dendritic cells.

### 配列類似性

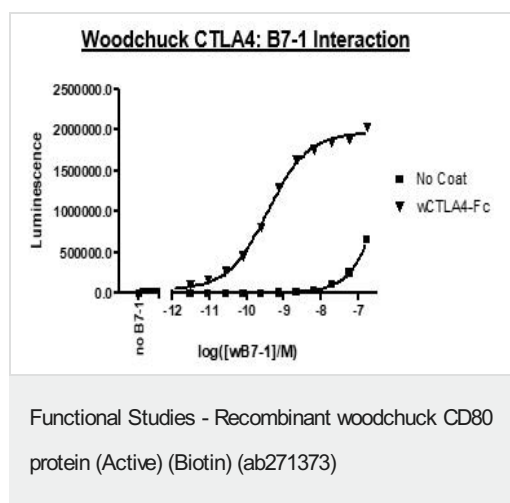
Contains 1 Ig-like C2-type (immunoglobulin-like) domain.

Contains 1 Ig-like V-type (immunoglobulin-like) domain.

### 細胞内局在

Membrane.

## 画像

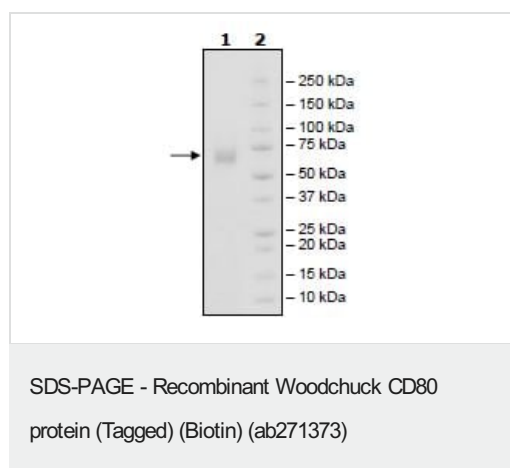


Functional analysis of ab271373 in a woodchuck CTLA4:CD80 interaction assay.

Note: B7-1 = CD80.

Buffer is PBS with 0.1% BSA. Blocking buffer is Superblock + 0.05% Tween-20. The coat protein, woodchuck CTLA4 (wCTLA4), was added ON at 4 deg (various concentrations as indicated).

Binding reaction initiated with addition of woodchuck B7-1-biotin (wB7-1-biotin) for 2h at RT. Binding was detected using Strep-HRP generated luminescence.



SDS-PAGE analysis of ab271373.

**Please note:** All products are "FOR RESEARCH USE ONLY. NOT FOR USE IN DIAGNOSTIC PROCEDURES"

### **Our Abpromise to you: Quality guaranteed and expert technical support**

---

- Replacement or refund for products not performing as stated on the datasheet
- Valid for 12 months from date of delivery
- Response to your inquiry within 24 hours
  
- We provide support in Chinese, English, French, German, Japanese and Spanish
- Extensive multi-media technical resources to help you
- We investigate all quality concerns to ensure our products perform to the highest standards

If the product does not perform as described on this datasheet, we will offer a refund or replacement. For full details of the Abpromise, please visit <https://www.abcam.co.jp/abpromise> or contact our technical team.

### **Terms and conditions**

---

- Guarantee only valid for products bought direct from Abcam or one of our authorized distributors