

Recombinant Rat TGF beta 1 protein (Tagged) ab236341

画像数 1

製品の詳細

製品名	Recombinant Rat TGF beta 1 protein (Tagged)
精製度	> 90 % SDS-PAGE.
発現系	Escherichia coli
アクセッション番号	P17246
タンパク質長	Protein fragment
Animal free	No
由来	Recombinant
生物種	Rat
配列	LSTCKTIDMELVKKRKRIEAI R QILSKLRLASPPSQGEVPPG PLPEAVLA LYNSTRDRVAGESADPEPEPEADYYAKEVTRVLMVDRNNAIY DKTKDITH SIYMFNTSDIREAVPEPPLLSRAELRLQRFKSTVEQHVLY QKYSNSW RYLGNRLLTPTDTPEWLSFDVTGVVRQWLNQGDGIQGRFSA HCSCDSKD NVLHVEINGISPKRRGDLGTI H DMNRPFLLLMATPLERAQHL HSSRHRR
予測される分子量	45 kDa including tags
領域	30 to 278
タグ	His tag N-Terminus
配列の追加情報	N-terminal 6xHis-SUMO-tagged. Corresponding to the full length latency-associated peptide.

特性

Our **Abpromise guarantee** covers the use of **ab236341** in the following tested applications.

The application notes include recommended starting dilutions; optimal dilutions/concentrations should be determined by the end user.

アプリケーション SDS-PAGE

製品の状態 Liquid

前処理および保存

保存方法および安定性

Shipped at 4°C. Store at -20°C or -80°C. Avoid freeze / thaw cycle.

pH: 7.2

Constituents: Tris buffer, 50% Glycerol (glycerin, glycerine)

関連情報

機能

Multifunctional protein that controls proliferation, differentiation and other functions in many cell types. Many cells synthesize TGFB1 and have specific receptors for it. It positively and negatively regulates many other growth factors. It plays an important role in bone remodeling as it is a potent stimulator of osteoblastic bone formation, causing chemotaxis, proliferation and differentiation in committed osteoblasts.

組織特異性

Highly expressed in bone. Abundantly expressed in articular cartilage and chondrocytes and is increased in osteoarthritis (OA). Co-localizes with ASPN in chondrocytes within OA lesions of articular cartilage.

関連疾患

Defects in TGFB1 are the cause of Camurati-Engelmann disease (CE) [MIM:131300]; also known as progressive diaphyseal dysplasia 1 (DPD1). CE is an autosomal dominant disorder characterized by hyperostosis and sclerosis of the diaphyses of long bones. The disease typically presents in early childhood with pain, muscular weakness and waddling gait, and in some cases other features such as exophthalmos, facial paralysis, hearing difficulties and loss of vision.

配列類似性

Belongs to the TGF-beta family.

翻訳後修飾

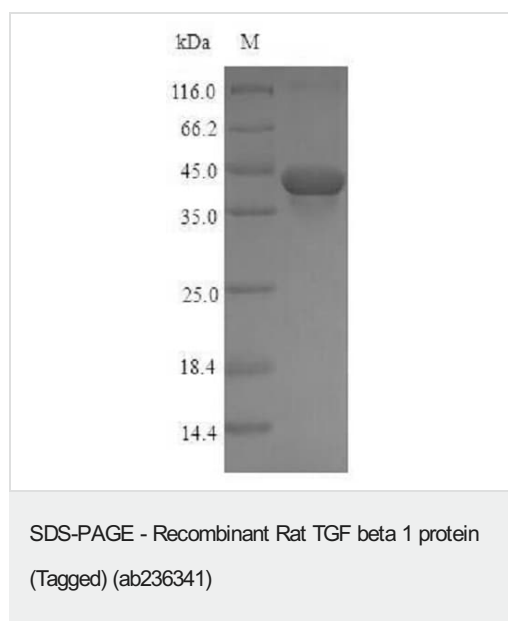
Glycosylated.

The precursor is cleaved into mature TGF-beta-1 and LAP, which remains non-covalently linked to mature TGF-beta-1 rendering it inactive.

細胞内局在

Secreted > extracellular space > extracellular matrix.

画像



(Tris-Glycine gel) Discontinuous SDS-PAGE (reduced) with 5% enrichment gel and 15% separation gel analysis of ab236341.

Our Abpromise to you: Quality guaranteed and expert technical support

- Replacement or refund for products not performing as stated on the datasheet
- Valid for 12 months from date of delivery
- Response to your inquiry within 24 hours
- We provide support in Chinese, English, French, German, Japanese and Spanish
- Extensive multi-media technical resources to help you
- We investigate all quality concerns to ensure our products perform to the highest standards

If the product does not perform as described on this datasheet, we will offer a refund or replacement. For full details of the Abpromise, please visit <https://www.abcam.co.jp/abpromise> or contact our technical team.

Terms and conditions

- Guarantee only valid for products bought direct from Abcam or one of our authorized distributors