

Recombinant rat IL-6 protein (Active) ab281812

画像数 4

製品の詳細

製品名	Recombinant rat IL-6 protein (Active)		
生理活性	Fully biologically active determined by the dose dependent proliferation of rat splenocytes. ED ₅₀ is ≤0.195 ng/ml, corresponding to a specific activity of 5.13 x 10 ⁶ units/mg.		
精製度	≥ 95 % SDS-PAGE. ≥95% Purity by HPLC		
エンドトキシン・レベル	≤0.005 Eu/μg		
発現系	HEK 293 cells		
アクセッション番号	<u>P20607</u>		
タンパク質長	Full length protein		
Animal free	Yes		
キャリア・フリー	はい		
由来	Recombinant		
生物種	Rat		
配列	PTSQVRRGDF TEDTTHNRPV YTTSQVGGLI TYVLRILEM RKELCNGNSD CMNSDDALSE NNLKLPEIQR NDGCFQTGYN QEICLLKICS GLLEFRFYLE FVKNNLQDNK KDKARVIQSN TETLVHIFKQ EIKDSYKIVL PTPTSNALLM EKLESQKEWL RTKTIQLILK ALEEFLKVTM RSTRQT		
予測される分子量	22 kDa		
実際の分子量	22 kDa		
分子量情報	Mass determination by ESI-TOF. Predicted MW is 21642.77 Da. (+/- 10 Da by ESI-TOF). Observes MW is 21791.47 Da. Additional masses at 22156.88 and 22522.20 are due to residual O-glycans.		
領域	25 to 211		
配列の追加情報	N-terminal glycine. Full-length mature chain lacking the signal peptide.		

特性

Our **Abpromise guarantee** covers the use of **ab281812** in the following tested applications.

The application notes include recommended starting dilutions; optimal dilutions/concentrations should be determined by the end user.

アプリケーション

Functional Studies
HPLC
Mass Spectrometry
SDS-PAGE

製品の状態

Lyophilized

前処理および保存

保存方法および安定性

Shipped at Room Temperature. Store at Room Temperature.

pH: 7.40

Constituents: 0.727% Dibasic monohydrogen potassium phosphate, 0.248% Monobasic dihydrogen potassium phosphate, 10% Trehalose

This product is an active protein and may elicit a biological response in vivo, handle with caution.

再構成

Reconstitute with phosphate buffered saline. Store lyophilized form at room temperature.

Reconstitute, aliquot and store at -80°C for 12 months or +4°C for 1 week. Avoid repeated freeze-thaw. Lyophilized contents may appear as either a translucent film or a white powder. This variance does not affect the quality of the product. Lyophilized contents may appear as either a translucent film or a white powder. This variance does not affect the quality of the product.

関連情報

機能

Cytokine with a wide variety of biological functions. It is a potent inducer of the acute phase response. Plays an essential role in the final differentiation of B-cells into Ig-secreting cells. Involved in lymphocyte and monocyte differentiation. It induces myeloma and plasmacytoma growth and induces nerve cells differentiation. Acts on B-cells, T-cells, hepatocytes, hematopoietic progenitor cells and cells of the CNS. Also acts as a myokine. It is discharged into the bloodstream after muscle contraction and acts to increase the breakdown of fats and to improve insulin resistance.

関連疾患

Genetic variations in IL6 are associated with susceptibility to rheumatoid arthritis systemic juvenile (RASJ) [MIM:604302]. An inflammatory articular disorder with systemic-onset beginning before the age of 16. It represents a subgroup of juvenile arthritis associated with severe extraarticular features and occasionally fatal complications. During active phases of the disorder, patients display a typical daily spiking fever, an evanescent macular rash, lymphadenopathy, hepatosplenomegaly, serositis, myalgia and arthritis.

Note=A IL6 promoter polymorphism is associated with a lifetime risk of development of Kaposi sarcoma in HIV-infected men.

配列類似性

Belongs to the IL-6 superfamily.

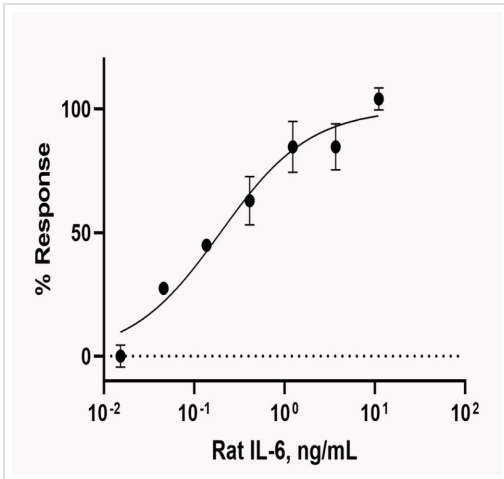
翻訳後修飾

N- and O-glycosylated.

細胞内局在

Secreted.

画像



Functional Studies - Recombinant rat IL-6 protein (ab281812)

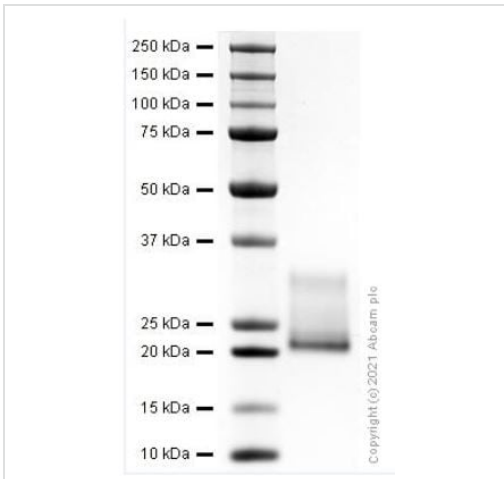
Functional analysis of ab281812.

Fully biologically active determined by the dose dependent proliferation of rat splenocytes.

ED₅₀ is ≤0.195 ng/ml, corresponding to a specific activity of 5.13 x 10⁶ units/mg.

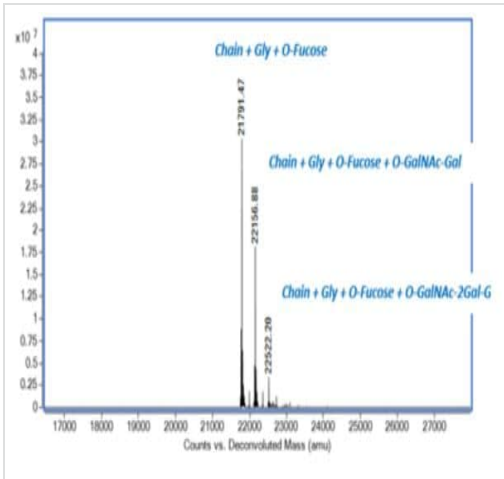
Cell based assay testing is performed on the first lot of protein only and is provided as a reference for protein activity; subsequent lots of protein must pass all biophysical quality control parameters that meet the same parameters as the first lot.

Lot: GR3385914-1



SDS-PAGE - Recombinant Rat IL-6 protein (ab281812)

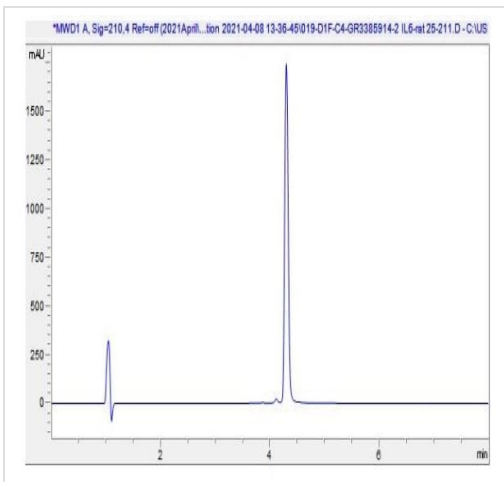
SDS-PAGE analysis of ab281812.



Mass Spectrometry - Recombinant Rat IL-6 protein (ab281812)

Mass determination by ESI-TOF.

Predicted MW is 21642.77 Da. (+/- 10 Da by ESI-TOF). Observed MW is 21791.47 Da. Additional masses at 22156.88 and 22522.20 are due to residual O-glycans.



Mass Spectrometry - Recombinant Rat IL-6 protein (ab281812)

HPLC analysis of ab281812.

Please note: All products are "FOR RESEARCH USE ONLY. NOT FOR USE IN DIAGNOSTIC PROCEDURES"

Our Abpromise to you: Quality guaranteed and expert technical support

- Replacement or refund for products not performing as stated on the datasheet
- Valid for 12 months from date of delivery
- Response to your inquiry within 24 hours
- We provide support in Chinese, English, French, German, Japanese and Spanish
- Extensive multi-media technical resources to help you
- We investigate all quality concerns to ensure our products perform to the highest standards

If the product does not perform as described on this datasheet, we will offer a refund or replacement. For full details of the Abpromise, please visit <https://www.abcam.co.jp/abpromise> or contact our technical team.

Terms and conditions

- Guarantee only valid for products bought direct from Abcam or one of our authorized distributors