

### Recombinant Protein G (HRP) ab7460

★★★★★ [1 Abreviews](#) [9 References](#) [画像数 2](#)

#### 製品の詳細

製品名	Recombinant Protein G (HRP)
精製度	> 98 % Protein G purified. Protein G Peroxidase was prepared from chromatographically pure Protein G.
発現系	Escherichia coli
アクセッション番号	<b>P19909</b>
タンパク質長	Protein fragment
Animal free	No
由来	Recombinant
生物種	Streptococcus
配列	L DKYGVSDYHK NLINNAKTVE GVKDLQAQVV ESAKKARISE ATDGLSDFLK SQTPAEDTVK SIELAEAKVL ANRELDKYGV SDYYKNLINN AKTVEGVKAL IDEILAALPK TDTYKLILNG KTLKGETTTE AVDAATAEKV FKQYANDNGV DGEWTYDDAT KTFTVTEKPE VIDASELTPA VTYTKLVING KTLK
予測される分子量	63 kDa
領域	190 to 384
標識	HRP

#### 特性

Our **Abpromise guarantee** covers the use of **ab7460** in the following tested applications.

The application notes include recommended starting dilutions; optimal dilutions/concentrations should be determined by the end user.

アプリケーション	Western blot
	Dot blot
	ELISA
	Immunohistochemistry (Formalin/PFA-fixed paraffin-embedded sections)
製品の状態	Lyophilized
備考	No reaction was observed against anti-Protein A.

## 前処理および保存

### 保存方法および安定性

Shipped at 4°C. Upon delivery aliquot and store at -20°C. Avoid freeze / thaw cycles.

Preservative: 0.01% Gentamicin sulphate

Constituents: 0.42% Potassium phosphate, 0.87% Sodium chloride, 1.5% BSA

### 再構成

Reconstitute product with 1ml of deionized water.

## 関連情報

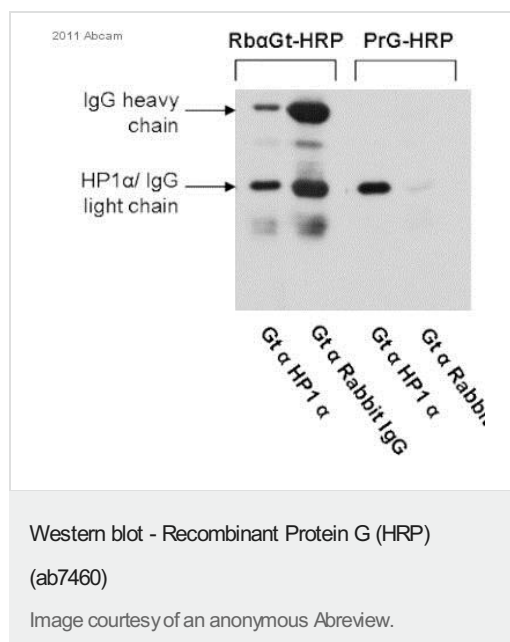
### 関連性

Protein G is a bacterial protein derived from the cell wall of certain strains of *β*-hemolytic *Streptococci*. It binds with high affinity to the Fc portion of various classes and subclasses of immunoglobulins from a variety of species. Protein G binds to all IgG subclasses from human, mouse and rat species. It also binds to total IgG from guinea pig, rabbit, goat, cow, sheep, and horse. Protein G binds preferentially to the Fc portion of IgG, but can also bind to the Fab region, making it useful for purification of F(ab') fragments of IgG. Due to its affinity for the Fc region of many mammalian immunoglobulins, protein G is considered a universal reagent in biochemistry and immunology.

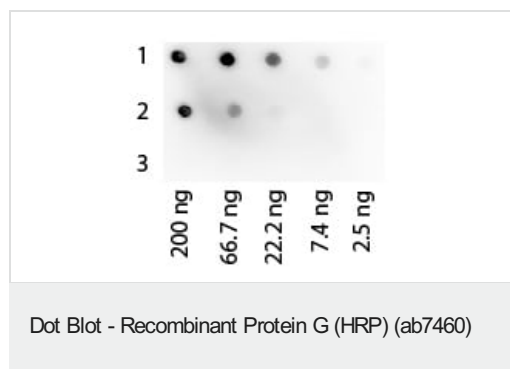
### 細胞内局在

Cell Wall and Secreted

## 画像



Used for detection of primary antibody in WB after IP with the same antibody. In this case, IP was with goat anti HP1-alpha [ab77256](#) on Protein G beads, and detection was with goat anti HP1-alpha [ab77256](#), and Protein G HRP ab7460. Detection was very specific, and eliminated heavy and light chains of denatured antibodies.



Dot Blot analysis of ab7460 Protein G protein (HRP).

**Load:** 200ng of ab7460 followed by a 3-fold serial dilution

**Antigens:**

**Row 1:** Human IgG

**Row 2:** Rat IgG

**Row 3:** Dog IgG

**Primary antibody:** none

**Secondary antibody:** Protein G Peroxidase Conjugated at 1/1000 for 60 min at room temperature

**Block:** Blocking buffer for 60 min at room temperature

**Please note:** All products are "FOR RESEARCH USE ONLY. NOT FOR USE IN DIAGNOSTIC PROCEDURES"

### Our Abpromise to you: Quality guaranteed and expert technical support

- Replacement or refund for products not performing as stated on the datasheet
- Valid for 12 months from date of delivery
- Response to your inquiry within 24 hours
- We provide support in Chinese, English, French, German, Japanese and Spanish
- Extensive multi-media technical resources to help you
- We investigate all quality concerns to ensure our products perform to the highest standards

If the product does not perform as described on this datasheet, we will offer a refund or replacement. For full details of the Abpromise, please visit <https://www.abcam.co.jp/abpromise> or contact our technical team.

### Terms and conditions

- Guarantee only valid for products bought direct from Abcam or one of our authorized distributors