

Recombinant mouse SCF protein (Active) ab259390

画像数 4

製品の詳細

製品名	Recombinant mouse SCF protein (Active)
生理活性	Fully biologically active when compared to standard. ED ₅₀ is ≤ 2.223 ng /ml, corresponding to a specific activity of 4.50 x 10 ⁵ units/mg.
精製度	≥ 95 % SDS-PAGE. Purity by HPLC ≥ 95%.
エンドトキシン・レベル	≤0.005 Eu/μg
発現系	HEK 293 cells
アクセッション番号	<u>P20826</u>
タンパク質長	Protein fragment
Animal free	Yes
キャリア・フリー	はい
由来	Recombinant
生物種	Mouse
配列	KEICGNPVTD NVKDITKLVA NLPNDYMITL NYVAGMDVLP SHCWL RDMVI QLSLSLTLL DKFSNISEGL SNYSIIDKLG KIVDDLVLCM EENAPKNIKE SPKRPETRSF TPEEFSIFN RSIDAFKDFM VASDTSDCVL SSTLGPEKDS RVSVTKPFML PPV
予測される分子量	18 kDa
分子量情報	M+0.49 Da (calc MW 18284.51) (+569 Da: Hex(1)HexNAc(2))
領域	26 to 188
配列の追加情報	N-terminal glycine

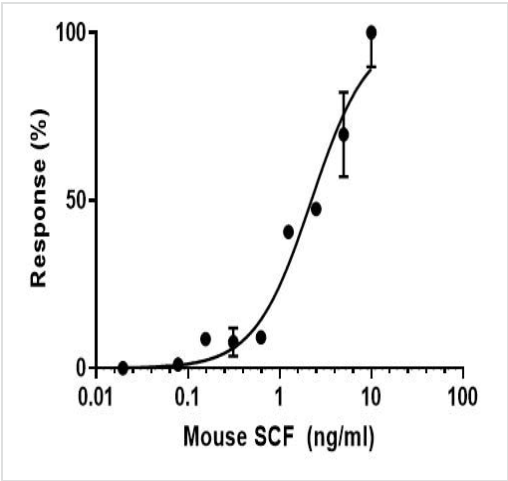
特性

Our **Abpromise guarantee** covers the use of **ab259390** in the following tested applications.

The application notes include recommended starting dilutions; optimal dilutions/concentrations should be determined by the end user.

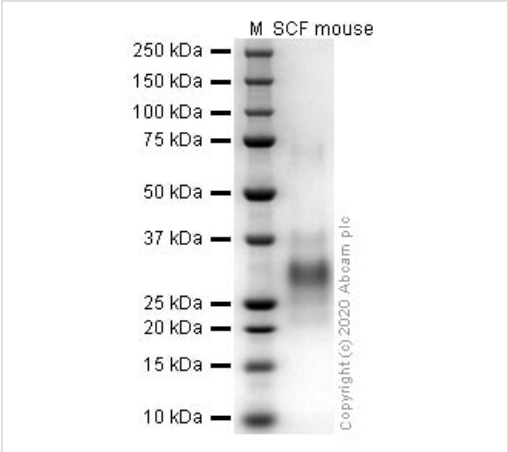
アプリケーション	Functional Studies
	Mass Spectrometry

	HPLC
	SDS-PAGE
	Cell Culture
製品の状態	Lyophilized
備考	This protein is filter sterilised prior to aliquoting and lyophilisation. All aliquoting and lyophilisation steps are performed in a sterile environment
前処理および保存	
保存方法および安定性	<p>Shipped at Room Temperature. Store at Room Temperature.</p> <p>pH: 6.00</p> <p>Constituents: 0.727% Dibasic monohydrogen potassium phosphate, 0.248% Monobasic dihydrogen potassium phosphate, 10.26% Trehalose</p> <p>Buffer reconstituted from</p> <p>This product is an active protein and may elicit a biological response in vivo, handle with caution.</p>
再構成	Reconstitute in PBS, aliquot and store at -80 C for 12 months or 4 C for 1 week. Avoid repeated freeze thaw. Lyophilized contents may appear as either a translucent film or a white powder. This variance does not affect the quality of the product.
関連情報	
機能	Ligand for the receptor-type protein-tyrosine kinase KIT. Plays an essential role in the regulation of cell survival and proliferation, hematopoiesis, stem cell maintenance, gametogenesis, mast cell development, migration and function, and in melanogenesis. KITLG/SCF binding can activate several signaling pathways. Promotes phosphorylation of PIK3R1, the regulatory subunit of phosphatidylinositol 3-kinase, and subsequent activation of the kinase AKT1. KITLG/SCF and KIT also transmit signals via GRB2 and activation of RAS, RAF1 and the MAP kinases MAPK1/ERK2 and/or MAPK3/ERK1. KITLG/SCF and KIT promote activation of STAT family members STAT1, STAT3 and STAT5. KITLG/SCF and KIT promote activation of PLCG1, leading to the production of the cellular signaling molecules diacylglycerol and inositol 1,4,5-trisphosphate. KITLG/SCF acts synergistically with other cytokines, probably interleukins.
関連疾患	Hyperpigmentation with or without hypopigmentation, familial progressive Deafness, congenital, unilateral or asymmetric
配列類似性	Belongs to the SCF family.
発生段階	Acts in the early stages of hematopoiesis.
翻訳後修飾	<p>A soluble form (sKITLG) is produced by proteolytic processing of isoform 1 in the extracellular domain.</p> <p>Found in two differentially glycosylated forms, LMW-SCF and HMW-SCF. LMW-SCF is fully N-glycosylated at Asn-145, partially N-glycosylated at Asn-90, O-glycosylated at Ser-167, Thr-168 and Thr-180, and not glycosylated at Asn-97 or Asn-118. HMW-SCF is N-glycosylated at Asn-118, Asn-90 and Asn-145, O-glycosylated at Ser-167, Thr-168 and Thr-180, and not glycosylated at Asn-97.</p> <p>A soluble form exists as a cleavage product of the extracellular domain.</p>
細胞内局在	Secreted; Cell membrane and Cytoplasm. Cytoplasm, cytoskeleton. Cell membrane. Cell projection, lamellipodium. Cell projection, filopodium.



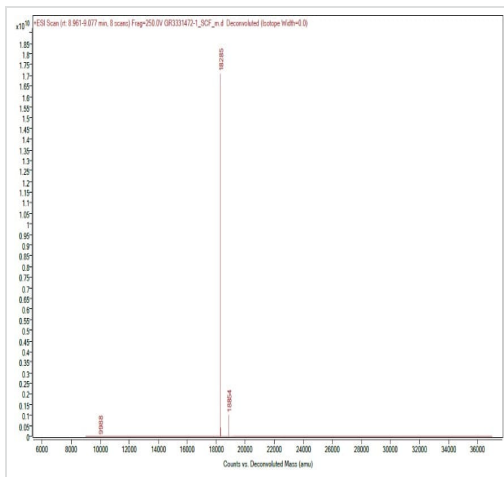
Functional Studies - Recombinant mouse SCF protein (Active) (ab259390)

Fully biologically active when compared to standard. Determined by dose-dependant stimulation of human TF-1 cells. ED₅₀ is ≤ 2.223 ng /ml, corresponding to a specific activity of 4.50×10^5 units/mg.



SDS-PAGE - Recombinant mouse SCF protein (Active) (ab259390)

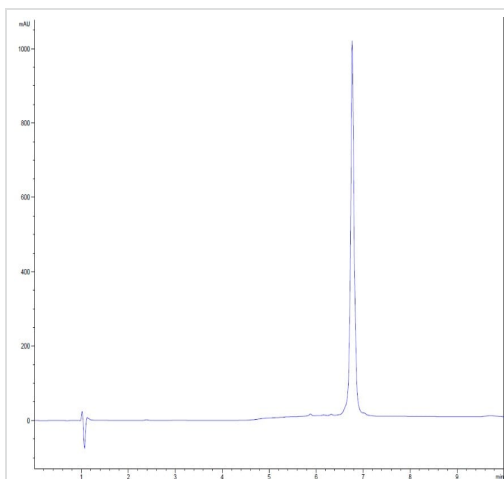
SDS-PAGE analysis of ab259390.



Mass Cytometry - Recombinant mouse SCF protein
(Active) (ab259390)

$M + 0.49 \text{ Da}$ (calc mass 18284.51) (+569 Da: Hex(1)HexNAc(2))

The spectrum was recorded with a 6545XT AdvanceBio LC/Q-TOF (Agilent Technologies) and a MabPac RP column (42.1x50 mm, 4 μm , Thermo Scientific). 5 μL of purified protein was injected and the gradient run from 85 % water:FA (99.9:0.1 v/v) and 15 % acetonitrile:FA (90:9.9:0.1 v/v/v) to 55 % water:FA (99.9:0.1 v/v) and 45 % acetonitrile:FA (90:9.9:0.1 v/v/v) within 3 minutes followed by an isocratic step for another 2.5 min. Flow rate was 0.4 mL/min and the column compartment temperature was 60 $^{\circ}\text{C}$. Data was analysed and deconvoluted using the Bioconfirm software (Agilent Technologies).



HPLC - Recombinant mouse SCF protein (Active)
(ab259390)

Purity: 95%

The spectrum was recorded using a 1260 Infinity II HPLC system with DAD and a MabPac RP column (3.0x100 mm, 4 μm). 5 μL of purified protein was injected and the gradient run from 80 % water:TFA (99.9:0.1 v/v) and 20 % acetonitrile:water:TFA (90:9.9:0.1 v/v/v) to 20 % water:TFA (99.9:0.1 v/v) and 80 % acetonitrile:water:TFA (90:9.9:0.1 v/v/v) within 3 minutes followed by an isocratic step for another 3 min. Flow rate was 0.5 mL/min and the column compartment temperature was 50 $^{\circ}\text{C}$.

Please note: All products are "FOR RESEARCH USE ONLY. NOT FOR USE IN DIAGNOSTIC PROCEDURES"

Our Abpromise to you: Quality guaranteed and expert technical support

- Replacement or refund for products not performing as stated on the datasheet
- Valid for 12 months from date of delivery
- Response to your inquiry within 24 hours
- We provide support in Chinese, English, French, German, Japanese and Spanish
- Extensive multi-media technical resources to help you
- We investigate all quality concerns to ensure our products perform to the highest standards

If the product does not perform as described on this datasheet, we will offer a refund or replacement. For full details of the Abpromise, please visit <https://www.abcam.co.jp/abpromise> or contact our technical team.

Terms and conditions

- Guarantee only valid for products bought direct from Abcam or one of our authorized distributors