

Recombinant Mouse PD-L1 protein (Fc Chimera) (Biotin) ab216261

[2 References](#) [画像数 2](#)

製品の詳細

製品名	Recombinant Mouse PD-L1 protein (Fc Chimera) (Biotin)	
精製度	> 90 % SDS-PAGE. >90% purity as measured by gel filtration.	
発現系	HEK 293 cells	
アクセッション番号	Q9EP73	
タンパク質長	Protein fragment	
Animal free	No	
由来	Recombinant	
生物種	Mouse	
配列	AFTITAPKDLVVEYGSNVTMECRFPVERELDLLALVVYWEK EDEQVIQF VAGEEDLKPQHSNFRGRASLPKDQLLKGNALQITDVKLQDA GYCCIIIS YGGADYKRITLKVNPYRKINQRISVDPATSEHELICQAEGY PEAEEIWT NSDHQPVSGKRSVTTSRTEGMLLNVTSSLRVNATANDVFYCT FWRSQPGQ NHTAELIIEPELPPATHPPQNRT	
予測される分子量	54 kDa including tags	
領域	18 to 238	
タグ	Avi tag C-Terminus	
配列の追加情報	Fused at the C-terminus to the Fc portion of mouse IgG2a (NM_021893). Biotinylated using AviTag technology.	
標識	Biotin	

特性

Our **Abpromise guarantee** covers the use of **ab216261** in the following tested applications.

The application notes include recommended starting dilutions; optimal dilutions/concentrations should be determined by the end user.

アプリケーション	SDS-PAGE
製品の状態	Liquid

前処理および保存

保存方法および安定性

Shipped at 4°C. Upon delivery aliquot. Store at -80°C. Avoid freeze / thaw cycle.

pH: 7.40

Constituents: 0.64% Sodium chloride, 0.02% Potassium chloride, 20% Glycerol (glycerin, glycerine), 79% Phosphate Buffer

関連情報

機能

Involved in the costimulatory signal, essential for T-cell proliferation and production of IL10 and IFNG, in an IL2-dependent and a PDCD1-independent manner. Interaction with PDCD1 inhibits T-cell proliferation and cytokine production.

組織特異性

Highly expressed in the heart, skeletal muscle, placenta and lung. Weakly expressed in the thymus, spleen, kidney and liver. Expressed on activated T- and B-cells, dendritic cells, keratinocytes and monocytes.

配列類似性

Belongs to the immunoglobulin superfamily. BTN/MOG family.

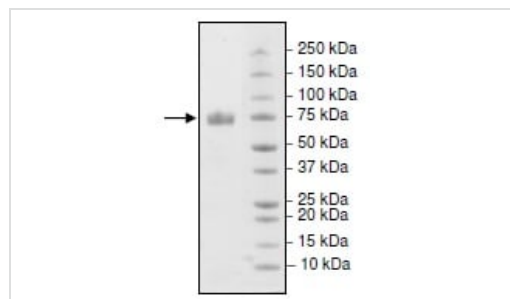
Contains 1 Ig-like C2-type (immunoglobulin-like) domain.

Contains 1 Ig-like V-type (immunoglobulin-like) domain.

細胞内局在

Cell membrane and Endomembrane system.

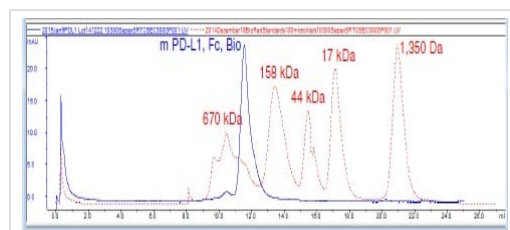
画像



SDS-PAGE - Recombinant Mouse PD-L1 protein
(Fc Chimera) (Biotin) (ab216261)

4-20% SDS-PAGE analysis of 3 µg ab216261.

This protein runs at an apparent higher molecular weight due to glycosylation.



Size Exclusion Chromatography - Recombinant
Mouse PD-L1 protein (Fc Chimera) (Biotin)
(ab216261)

Gel filtration curve of ab216261.

Please note: All products are "FOR RESEARCH USE ONLY. NOT FOR USE IN DIAGNOSTIC PROCEDURES"

Our Abpromise to you: Quality guaranteed and expert technical support

- Replacement or refund for products not performing as stated on the datasheet
- Valid for 12 months from date of delivery
- Response to your inquiry within 24 hours

- We provide support in Chinese, English, French, German, Japanese and Spanish
- Extensive multi-media technical resources to help you
- We investigate all quality concerns to ensure our products perform to the highest standards

If the product does not perform as described on this datasheet, we will offer a refund or replacement. For full details of the Abpromise, please visit <https://www.abcam.co.jp/abpromise> or contact our technical team.

Terms and conditions

- Guarantee only valid for products bought direct from Abcam or one of our authorized distributors