

### Recombinant mouse CXCL2 protein (Active) ab282382

画像数 4

#### 製品の詳細

製品名	Recombinant mouse CXCL2 protein (Active)
生理活性	Fully biologically active measured by its ability to chemoattract neutrophils. The ED <sub>50</sub> for this effect is ≤11.97 ng/ml corresponding to specific activity of 8.35 × 10 <sup>4</sup> units/mg.
精製度	≥ 95 % SDS-PAGE. =95% purity by HPLC
エンドトキシン・レベル	≤0.005 Eu/μg
発現系	HEK 293 cells
アクセッション番号	<b>P10889</b>
タンパク質長	Full length protein
Animal free	Yes
キャリア・フリー	はい
由来	Recombinant
生物種	Mouse
配列	AVVASELRCQ CLKTLPRVDF KNIQSLSVTP PGPHCAQTEV IATLKGGQKV CLDPEAPLVQ KIIQKILNKG KAN
予測される分子量	8 kDa
実際の分子量	8 kDa
分子量情報	Predicted MW is 7906.36 Da (+/- 10 da by ESI-TOF). Observed MW is 7906.27 Da.
領域	28 to 100
配列の追加情報	N-terminal glycine. Full-length mature chain lacking the signal peptide.

#### 特性

Our **Abpromise guarantee** covers the use of **ab282382** in the following tested applications.

The application notes include recommended starting dilutions; optimal dilutions/concentrations should be determined by the end user.

アプリケーション	Functional Studies
	SDS-PAGE
	HPLC

## Mass Spectrometry

### 製品の状態

Lyophilized

### 備考

For research use only and are not intended for diagnostic or therapeutic use, not for use in humans.

## 前処理および保存

### 保存方法および安定性

Shipped at Room Temperature. Store at Room Temperature.

pH: 7.4

Constituents: 0.727% Dibasic monohydrogen potassium phosphate, 0.428% Monobasic dihydrogen potassium phosphate, 10.26% Trehalose

This product is an active protein and may elicit a biological response in vivo, handle with caution.

### 再構成

Reconstitute with phosphate buffered saline. Store lyophilized form at room temperature.

Reconstitute, aliquot and store at -80°C for 12 months or +4°C for 1 week. Avoid repeated freeze-thaw. Lyophilized contents may appear as either a translucent film or a white powder. This variance does not affect the quality of the product.

## 関連情報

### 機能

Produced by activated monocytes and neutrophils and expressed at sites of inflammation. Hematopoietic chemokine, which, in vitro, suppresses hematopoietic progenitor cell proliferation. GRO-beta(5-73) shows a highly enhanced hematopoietic activity.

### 配列類似性

Belongs to the intercrine alpha (chemokine CxC) family.

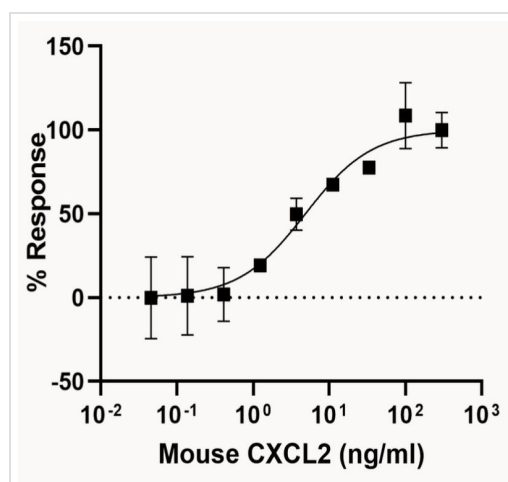
### 翻訳後修飾

The N-terminal processed form GRO-beta(5-73) is produced by proteolytic cleavage after secretion from bone marrow stromal cells.

### 細胞内局在

Secreted.

## 画像



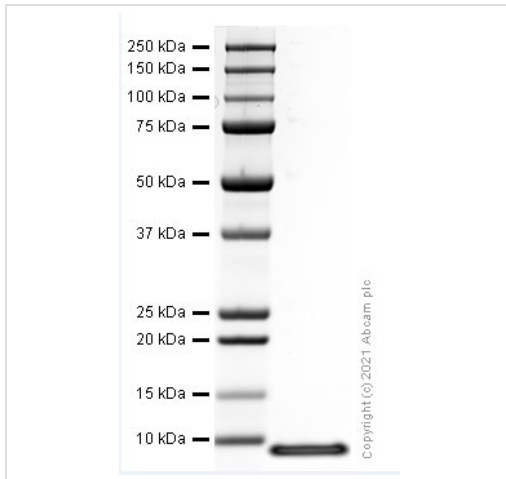
Functional Studies - Recombinant mouse CXCL2 protein (ab282382)

Fully biologically active measured by its ability to chemoattract neutrophils.

The ED<sub>50</sub> for this effect is ≤11.97 ng/ml corresponding to specific activity of  $8.35 \times 10^4$  units/mg.

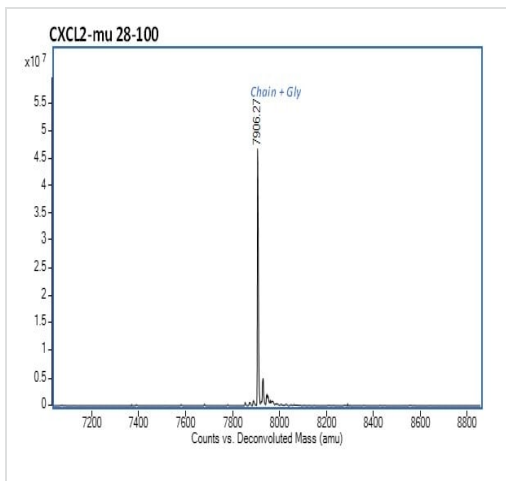
Cell based assay testing is performed on the first lot of protein only and is provided as a reference for protein activity; subsequent lots of protein must pass all biophysical quality control parameters that meet the same parameters as the first lot.

Lot: GR3391946-1



SDS-PAGE - Recombinant Mouse CXCL2 protein  
(ab282382)

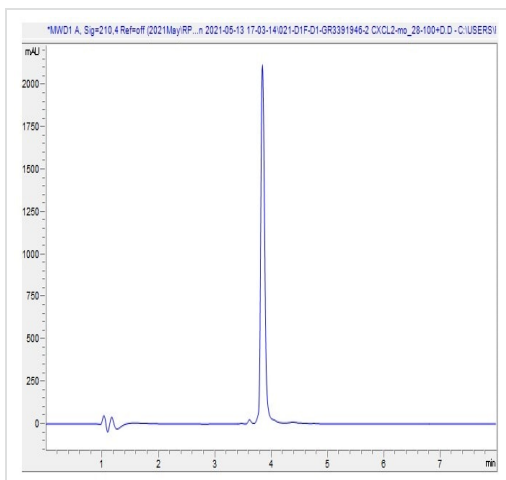
SDS-PAGE analysis of ab282382.



Mass Spectrometry - Recombinant Mouse CXCL2  
protein (ab282382)

Mass determination by ESI-TOF.

Predicted MW is 7906.36 Da. (+/- 10 Da by ESI-TOF). Observed MW is 7906.27 Da.



HPLC - Recombinant Mouse CXCL2 protein  
(ab282382)

HPLC analysis of ab282382.

**Please note:** All products are "FOR RESEARCH USE ONLY. NOT FOR USE IN DIAGNOSTIC PROCEDURES"

### **Our Abpromise to you: Quality guaranteed and expert technical support**

---

- Replacement or refund for products not performing as stated on the datasheet
- Valid for 12 months from date of delivery
- Response to your inquiry within 24 hours
- We provide support in Chinese, English, French, German, Japanese and Spanish
- Extensive multi-media technical resources to help you
- We investigate all quality concerns to ensure our products perform to the highest standards

If the product does not perform as described on this datasheet, we will offer a refund or replacement. For full details of the Abpromise, please visit <https://www.abcam.co.jp/abpromise> or contact our technical team.

### **Terms and conditions**

---

- Guarantee only valid for products bought direct from Abcam or one of our authorized distributors