

Recombinant mouse CX3CL1 protein (Active) ab240868

画像数 1

製品の詳細

製品名	Recombinant mouse CX3CL1 protein (Active)
生理活性	Fully biologically active when compared to standard. The ED ₅₀ as determined by a cell proliferation assay using human peripheral blood lymphocytes (PBL) is less than 0.5 µg/ml, corresponding to a specific activity of >2000 IU/mg.
精製度	> 95 % SDS-PAGE.
エンドトキシン・レベル	< 1.000 Eu/µg
発現系	Escherichia coli
アクセッション番号	<u>O35188</u>
タンパク質長	Protein fragment
Animal free	No
由来	Recombinant
生物種	Mouse
配列	QHLGMTKCEIMCGKMTSRIPVALLIRYQLNQESCGKRAIVLE TTQHRRFC ADPKEKWWQDAMKHLDHQAAALTKNG
予測される分子量	9 kDa including tags
領域	25 to 100

特性

Our **Abpromise guarantee** covers the use of **ab240868** in the following tested applications.

The application notes include recommended starting dilutions; optimal dilutions/concentrations should be determined by the end user.

アプリケーション	Functional Studies
	SDS-PAGE
製品の状態	Lyophilized

前処理および保存

保存方法および安定性	Shipped at 4°C. Store at -20°C or -80°C. Avoid freeze / thaw cycle.
	Constituent: PBS

0.2 µm filtered

This product is an active protein and may elicit a biological response in vivo, handle with caution.

再構成

We recommend that this vial be briefly centrifuged prior to opening to bring the contents to the bottom. Reconstitute in sterile distilled water or aqueous buffer containing 0.1 % BSA to a concentration of 0.1-1.0 mg/mL. Stock solutions should be apportioned into working aliquots and stored at = -20 °C. Further dilutions should be made in appropriate buffered solutions.

関連情報

機能

The soluble form is chemotactic for T-cells and monocytes, but not for neutrophils. The membrane-bound form promotes adhesion of those leukocytes to endothelial cells. May play a role in regulating leukocyte adhesion and migration processes at the endothelium. Binds to CX3CR1.

組織特異性

Small intestine, colon, testis, prostate, heart, brain, lung, skeletal muscle, kidney and pancreas.

配列類似性

Belongs to the intercrine delta family.

翻訳後修飾

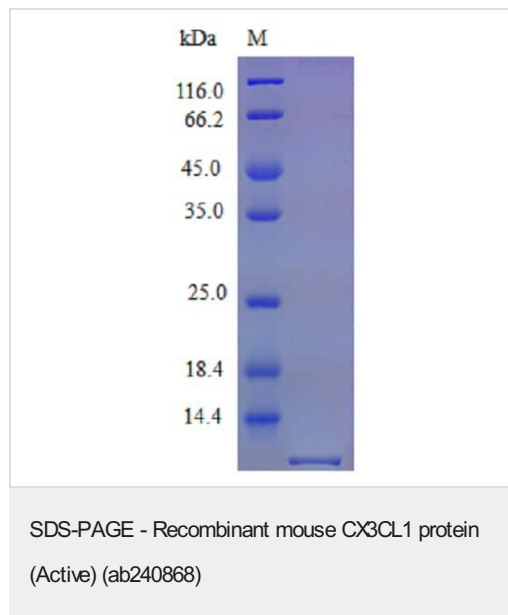
A soluble short 95 kDa form may be released by proteolytic cleavage from the long membrane-anchored form.

O-glycosylated with core 1 or possibly core 8 glycans.

細胞内局在

Secreted and Cell membrane.

画像



SDS-PAGE - Recombinant Mouse CX3CL1 protein (Active)
(ab240868)

Please note: All products are "FOR RESEARCH USE ONLY. NOT FOR USE IN DIAGNOSTIC PROCEDURES"

Our Abpromise to you: Quality guaranteed and expert technical support

- Replacement or refund for products not performing as stated on the datasheet
- Valid for 12 months from date of delivery

- Response to your inquiry within 24 hours
- We provide support in Chinese, English, French, German, Japanese and Spanish
- Extensive multi-media technical resources to help you
- We investigate all quality concerns to ensure our products perform to the highest standards

If the product does not perform as described on this datasheet, we will offer a refund or replacement. For full details of the Abpromise, please visit <https://www.abcam.co.jp/abpromise> or contact our technical team.

Terms and conditions

- Guarantee only valid for products bought direct from Abcam or one of our authorized distributors