

Product datasheet

Recombinant Mouse CTLA4 protein (Tagged) ab235718

画像数 3

製品の詳細

| | |
|-------------|--|
| 製品名 | Recombinant Mouse CTLA4 protein (Tagged) |
| 精製度 | > 90 % SDS-PAGE. |
| 発現系 | Escherichia coli |
| アクセッション番号 | P09793 |
| タンパク質長 | Protein fragment |
| Animal free | No |
| 由来 | Recombinant |
| 生物種 | Mouse |
| 配列 | EAIQVTQPSVVLASSHGVASFPCEYSPSHNTDEV RVTVLRQT NDQMTEVC ATTFTKNTVGFLDYPFCSGTFNESRVNLTIQGLRAVDTGLY LCKVELMY PPPYFVGMGNGTQIYVIDPEPCPDS |
| 予測される分子量 | 34 kDa including tags |
| 領域 | 36 to 161 |
| 配列の追加情報 | N-terminal 10xHis-SUMO-tagged and C-terminal Myc-tagged. Extracellular domain. |

特性

Our **Abpromise guarantee** covers the use of **ab235718** in the following tested applications.

The application notes include recommended starting dilutions; optimal dilutions/concentrations should be determined by the end user.

| | |
|----------|-------------------------------|
| アプリケーション | SDS-PAGE Mass Spectrometry |
| 製品の状態 | Liquid |

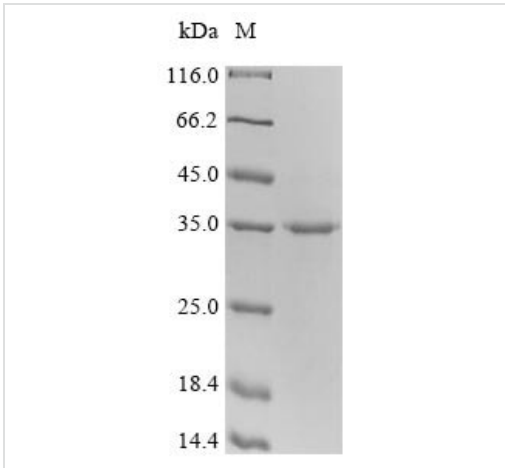
前処理および保存

| | |
|------------|---|
| 保存方法および安定性 | Shipped at 4°C. Store at -20°C or -80°C. Avoid freeze / thaw cycle. pH: 7.2 Constituents: Tris buffer, 50% Glycerol (glycerin, glycerine) |
|------------|---|

関連情報

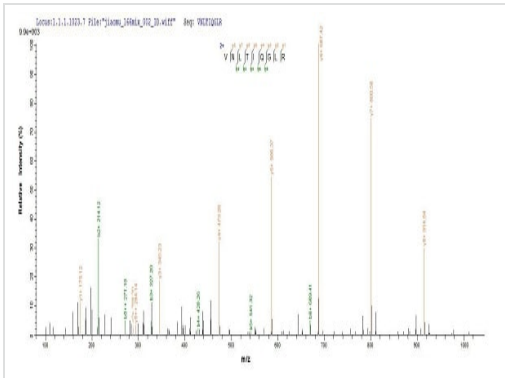
| | |
|-------|--|
| 機能 | Inhibitory receptor acting as a major negative regulator of T-cell responses. The affinity of CTLA4 for its natural B7 family ligands, CD80 and CD86, is considerably stronger than the affinity of their cognate stimulatory coreceptor CD28. |
| 組織特異性 | Widely expressed with highest levels in lymphoid tissues. Detected in activated T-cells where expression levels are 30- to 50-fold less than CD28, the stimulatory coreceptor, on the cell surface following activation. |
| 関連疾患 | <p>Genetic variation in CTLA4 influences susceptibility to systemic lupus erythematosus (SLE) [MIM:152700]. SLE is a chronic, inflammatory and often febrile multisystemic disorder of connective tissue. It affects principally the skin, joints, kidneys and serosal membranes. SLE is thought to represent a failure of the regulatory mechanisms of the autoimmune system.</p> <p>Note=Genetic variations in CTLA4 may influence susceptibility to Graves disease, an autoimmune disorder associated with overactivity of the thyroid gland and hyperthyroidism.</p> <p>Genetic variation in CTLA4 is the cause of susceptibility to diabetes mellitus insulin-dependent type 12 (IDDM12) [MIM:601388]. A multifactorial disorder of glucose homeostasis that is characterized by susceptibility to ketoacidosis in the absence of insulin therapy. Clinical features are polydipsia, polyphagia and polyuria which result from hyperglycemia-induced osmotic diuresis and secondary thirst. These derangements result in long-term complications that affect the eyes, kidneys, nerves, and blood vessels.</p> <p>Genetic variation in CTLA4 is the cause of susceptibility to celiac disease type 3 (CELIAC3) [MIM:609755]. It is a multifactorial disorder of the small intestine that is influenced by both environmental and genetic factors. It is characterized by malabsorption resulting from inflammatory injury to the mucosa of the small intestine after the ingestion of wheat gluten or related rye and barley proteins. In its classic form, celiac disease is characterized in children by malabsorption and failure to thrive.</p> |
| 配列類似性 | Contains 1 Ig-like V-type (immunoglobulin-like) domain. |
| 翻訳後修飾 | <p>N-glycosylation is important for dimerization.</p> <p>Phosphorylation at Tyr-201 prevents binding to the AP-2 adapter complex, blocks endocytosis, and leads to retention of CTLA4 on the cell surface.</p> |
| 細胞内局在 | Cell membrane. Exists primarily an intracellular antigen whose surface expression is tightly regulated by restricted trafficking to the cell surface and rapid internalisation and. |

画像



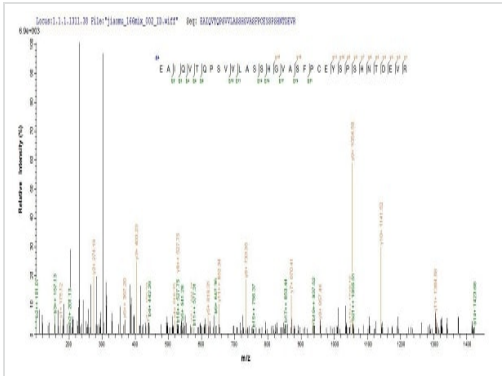
SDS-PAGE - Recombinant Mouse CTLA4 protein
(Tagged) (ab235718)

(Tris-Glycine gel) Discontinuous SDS-PAGE (reduced) with 5% enrichment gel and 15% separation gel using ab235718.



Mass Spectrometry - Recombinant Mouse CTLA4
protein (Tagged) (ab235718)

Based on the SEQUEST from database of E.coli host and target protein, the LC-MS/MS Analysis result of ab235718 could indicate that this peptide derived from E.coli-expressed Mus musculus (Mouse) Ctl4.



Based on the SEQUEST from database of E.coli host and target protein, the LC-MS/MS Analysis result of ab235718 could indicate that this peptide derived from E.coli-expressed Mus musculus (Mouse) Ctl4.

Mass Spectrometry - Recombinant Mouse CTLA4 protein (Tagged) (ab235718)

Please note: All products are "FOR RESEARCH USE ONLY. NOT FOR USE IN DIAGNOSTIC PROCEDURES"

Our Abpromise to you: Quality guaranteed and expert technical support

- Replacement or refund for products not performing as stated on the datasheet
- Valid for 12 months from date of delivery
- Response to your inquiry within 24 hours
- We provide support in Chinese, English, French, German, Japanese and Spanish
- Extensive multi-media technical resources to help you
- We investigate all quality concerns to ensure our products perform to the highest standards

If the product does not perform as described on this datasheet, we will offer a refund or replacement. For full details of the Abpromise, please visit <https://www.abcam.co.jp/abpromise> or contact our technical team.

Terms and conditions

- Guarantee only valid for products bought direct from Abcam or one of our authorized distributors