

Recombinant mouse C10 protein ab9898

画像数 1

製品の詳細

製品名	Recombinant mouse C10 protein
精製度	> 99 % SDS-PAGE. Sterile filtered Greater than 99% pure by HPLC analyses. Endotoxin level is less than 0.1 ng per g (1EU/g).
発現系	Escherichia coli
アクセッション番号	<u>P27784</u>
タンパク質長	Full length protein
Animal free	No
由来	Recombinant
生物種	Mouse
配列	GLIQEIEKEDRRYNPPIIHQGFQDTSSDCCFSYATQIPCKRF IYYFPTSG GCIKPGIIFISRRGTQVCADPSDRRVQRCLSTLKQGPRSGNK VIA
予測される分子量	11 kDa
領域	22 to 116

特性

Our **Abpromise guarantee** covers the use of **ab9898** in the following tested applications.

The application notes include recommended starting dilutions; optimal dilutions/concentrations should be determined by the end user.

アプリケーション	Functional Studies SDS-PAGE Western blot
製品の状態	Lyophilized
備考	The biological activity of this product was determined by its ability to chemoattract Balb/c mouse spleen MNCs using a concentration of 10-100ng/ml.

前処理および保存

保存方法および安定性	Shipped at 4°C. Store at +4°C short term (1-2 weeks). Upon delivery aliquot. Store at -20°C or -
------------	--

80°C. Avoid freeze / thaw cycle.

This product is an active protein and may elicit a biological response in vivo, handle with caution.

再構成

For lot specific reconstitution information please contact our Scientific Support Team.

関連情報

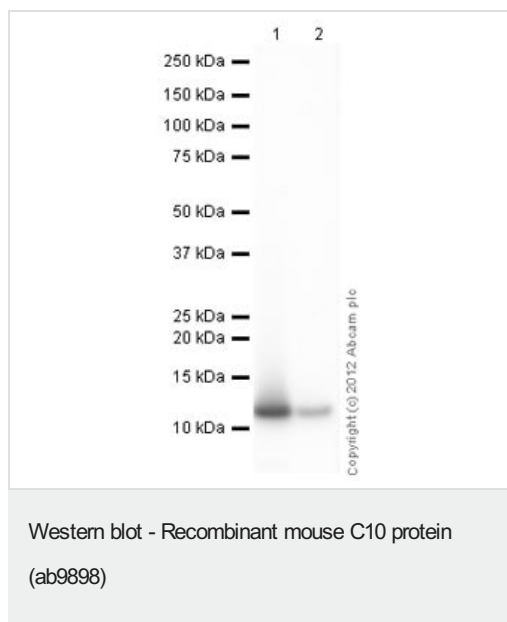
関連性

CCL6 (C10) is a small cytokine belonging to the CC chemokine family that has only been identified in rodents. It is a potent chemoattractant of macrophages, but it can also attract B cells, CD4+ lymphocytes and eosinophils. In mice, CCL6 is expressed in cells from neutrophil and macrophage lineages, and can be induced under conditions suitable for myeloid cell differentiation. CCL6 (C10) was originally identified as a transcript that is induced in bone marrow cells upon stimulation of GM-CSF. The cell surface receptor for CCL6 is believed to be the chemokine receptor CCR1.

細胞内局在

Secreted

画像



All lanes : Anti-C10 antibody ([ab9897](#)) at 0.2 µg/ml

Lane 1 : Recombinant mouse C10 protein (ab9898) at 0.1 µg

Lane 2 : Recombinant mouse C10 protein (ab9898) at 0.01 µg

Secondary

All lanes : Goat Anti-Rabbit IgG H&L (HRP) preadsorbed ([ab97080](#)) at 1/5000 dilution

Developed using the ECL technique.

Performed under reducing conditions.

Exposure time: 1 minute

Please note: All products are "FOR RESEARCH USE ONLY. NOT FOR USE IN DIAGNOSTIC PROCEDURES"

Our Abpromise to you: Quality guaranteed and expert technical support

- Replacement or refund for products not performing as stated on the datasheet
- Valid for 12 months from date of delivery
- Response to your inquiry within 24 hours
- We provide support in Chinese, English, French, German, Japanese and Spanish
- Extensive multi-media technical resources to help you
- We investigate all quality concerns to ensure our products perform to the highest standards

If the product does not perform as described on this datasheet, we will offer a refund or replacement. For full details of the Abpromise, please visit <https://www.abcam.co.jp/abpromise> or contact our technical team.

Terms and conditions

- Guarantee only valid for products bought direct from Abcam or one of our authorized distributors