

Recombinant Human Zyxin protein ab132079

画像数 1

製品の詳細

製品名	Recombinant Human Zyxin protein
発現系	Wheat germ
アクセッション番号	Q15942
タンパク質長	Full length protein
Animal free	No
由来	Recombinant
生物種	Human
配列	MAAPRPSPAISVSVSAPAFYAPQEKFPGVVAPKPKVNPFRPG DSEPPPAP GAQRAQMGRVGEIPPPPPEDFPLPPPPLAGDGDDAEGALGGA FPPPPPI EESFPPAPLEEEIFPSPPPPPEEEGGPEAPIPPPPQPREKVS SIDLEIDS LSSLDDMTKNDPFKARVSSGYVPPPVATPFSSKSSTKPAAG GTAPLPPW KSPSSSQPLQVPAPAQSQTQFHVQPQPQPKPQVQLHVQSQT QPVSLANT QPRGPPASSPAPAPKFSPVTPKFTPVASKFSPGAPGGSGSQP NQKLGHPE ALSAGTGSPQPPSFTYAQQREKPRVQEKQHPVPPPAQNQNQV RSPGAPGP LTLKEVEELEQLTQQLMQDMEHPQRQNVAVNELCGRCHQPLA RAQPAVRA LGQLFHIACFTCHQCAQQLQGQQFYSLGAPYCEGCYTDITLE KCNTCGEP ITDRMLRATGKAYHPHCFTCVVCARPLEGTSFIVDQANRPHC VPDYHKQY APRCVCSEPIMPEPGRDETVRVVALDKNFHMKCYECEDCGK PLSIEADD NGCFPLDGHVLCRKCHTARAQT
予測される分子量	89 kDa including tags
領域	1 to 572

特性

Our **Abpromise guarantee** covers the use of **ab132079** in the following tested applications.

The application notes include recommended starting dilutions; optimal dilutions/concentrations should be determined by the end user.

アプリケーション	SDS-PAGE
	Western blot
	ELISA
製品の状態	Liquid

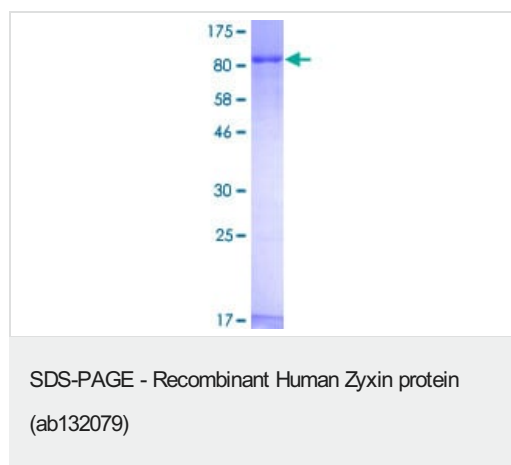
前処理および保存

保存方法および安定性	Shipped on dry ice. Upon delivery aliquot and store at -80°C. Avoid freeze / thaw cycles. pH: 8.00 Constituents: 0.31% Glutathione, 0.79% Tris HCl
------------	--

関連情報

機能	Adhesion plaque protein. Binds alpha-actinin and the CRP protein. Important for targeting TES and ENA/VASP family members to focal adhesions and for the formation of actin-rich structures. May be a component of a signal transduction pathway that mediates adhesion-stimulated changes in gene expression.
配列類似性	Belongs to the zyxin/ajuba family. Contains 3 LIM zinc-binding domains.
細胞内局在	Cytoplasm. Cytoplasm, cytoskeleton. Nucleus. Cell junction, focal adhesion. Associates with the actin cytoskeleton near the adhesion plaques. Enters the nucleus in the presence of HESX1.

画像



12.5% SDS-PAGE analysis of ab132079 stained with Coomassie Blue.

Please note: All products are "FOR RESEARCH USE ONLY. NOT FOR USE IN DIAGNOSTIC PROCEDURES"

Our Abpromise to you: Quality guaranteed and expert technical support

- Replacement or refund for products not performing as stated on the datasheet

- Valid for 12 months from date of delivery
- Response to your inquiry within 24 hours

- We provide support in Chinese, English, French, German, Japanese and Spanish
- Extensive multi-media technical resources to help you
- We investigate all quality concerns to ensure our products perform to the highest standards

If the product does not perform as described on this datasheet, we will offer a refund or replacement. For full details of the Abpromise, please visit <https://www.abcam.co.jp/abpromise> or contact our technical team.

Terms and conditions

- Guarantee only valid for products bought direct from Abcam or one of our authorized distributors