

# Recombinant Human XPC protein (His tag) ab236173

画像数 3

### 製品の詳細

---

製品名	Recombinant Human XPC protein (His tag)
精製度	> 90 % SDS-PAGE.
発現系	Escherichia coli
アクセッション番号	<b><u>Q01831</u></b>
タンパク質長	Protein fragment
Animal free	No
由来	Recombinant
生物種	Human
配列	SLPAASSSSSSSKRGKKMCSGDGEKAEKRSIAGIDQWLEVFCE QEEKWVCV DCVHGVVGQPLTCYKYATKPMTYVVGIDSDGWVRDVTQRYDP VWMTVTRK CRVDAEWVAETLRPYQSPFMDREKKEDLEFQAKHMDQPLPTA IGLYKNHP LYALKRHLLKYEAIYPETAAILGYCRGEAVYSRDCVHTLHSR DTWLKKAR VVRLGEVPYKMKVGFNSRARKARLAEPQLREENDLGLFG
予測される分子量	32 kDa including tags
領域	496 to 734
タグ	His tag N-Terminus

### 特性

---

Our **Abpromise guarantee** covers the use of **ab236173** in the following tested applications.

The application notes include recommended starting dilutions; optimal dilutions/concentrations should be determined by the end user.

アプリケーション	Mass Spectrometry SDS-PAGE
質量分析	LC-MS/MS
製品の状態	Liquid

## 前処理および保存

---

### 保存方法および安定性

Shipped at 4°C. Store at -20°C or -80°C. Avoid freeze / thaw cycle.

pH: 7.2

Constituents: Tris buffer, 50% Glycerol (glycerin, glycerine)

## 関連情報

---

### 機能

Involved in global genome nucleotide excision repair (GG-NER) by acting as damage sensing and DNA-binding factor component of the XPC complex. Has only a low DNA repair activity by itself which is stimulated by RAD23B and RAD23A. Has a preference to bind DNA containing a short single-stranded segment but not to damaged oligonucleotides. This feature is proposed to be related to a dynamic sensor function: XPC can rapidly screen duplex DNA for non-hydrogen-bonded bases by forming a transient nucleoprotein intermediate complex which matures into a stable recognition complex through an intrinsic single-stranded DNA-binding activity.

The XPC complex is proposed to represent the first factor bound at the sites of DNA damage and together with other core recognition factors, XPA, RPA and the TFIIH complex, is part of the pre-incision (or initial recognition) complex. The XPC complex recognizes a wide spectrum of damaged DNA characterized by distortions of the DNA helix such as single-stranded loops, mismatched bubbles or single stranded overhangs. The orientation of XPC complex binding appears to be crucial for inducing a productive NER. XPC complex is proposed to recognize and to interact with unpaired bases on the undamaged DNA strand which is followed by recruitment of the TFIIH complex and subsequent scanning for lesions in the opposite strand in a 5'-to-3' direction by the NER machinery. Cyclobutane pyrimidine dimers (CPDs) which are formed upon UV-induced DNA damage escape detection by the XPC complex due to a low degree of structural perturbation. Instead they are detected by the UV-DDB complex which in turn recruits and cooperates with the XPC complex in the respective DNA repair. In vitro, the XPC:RAD23B dimer is sufficient to initiate NER; it preferentially binds to cisplatin and UV-damaged double-stranded DNA and also binds to a variety of chemically and structurally diverse DNA adducts. XPC:RAD23B contacts DNA both 5' and 3' of a cisplatin lesion with a preference for the 5' side. XPC:RAD23B induces a bend in DNA upon binding. XPC:RAD23B stimulates the activity of DNA glycosylases TDG and SMUG1.

### 関連疾患

Defects in XPC are a cause of xeroderma pigmentosum complementation group C (XP-C) [MIM:278720]; also known as xeroderma pigmentosum III (XP3). XP-C is a rare human autosomal recessive disease characterized by solar sensitivity, high predisposition for developing cancers on areas exposed to sunlight and, in some cases, neurological abnormalities.

### 配列類似性

Belongs to the XPC family.

### 翻訳後修飾

Phosphorylated upon DNA damage, probably by ATM or ATR.

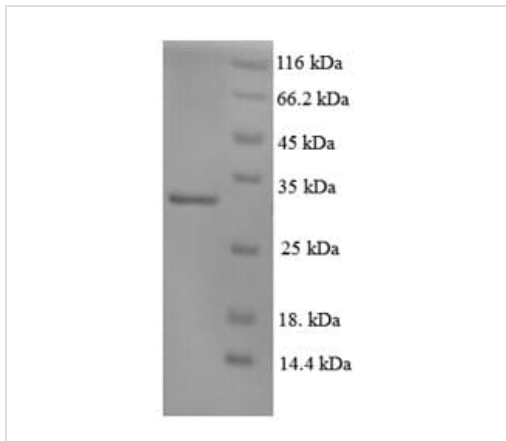
Ubiquitinated upon UV irradiation; the ubiquitination requires the UV-DDB complex, appears to be reversible and does not serve as a signal for degradation.

### 細胞内局在

Nucleus. Cytoplasm. Omnipresent in the nucleus and consistently associates with and dissociates from DNA in the absence of DNA damage. Continuously shuttles between the cytoplasm and the nucleus, which is impeded by the presence of NER lesions.

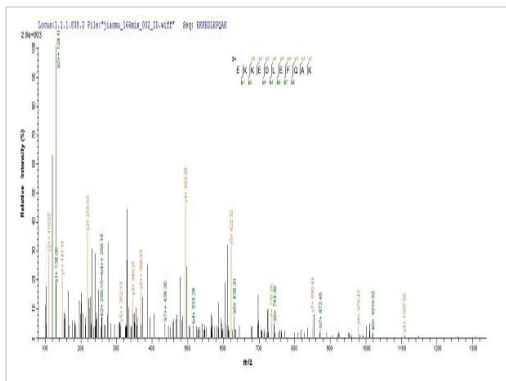
## 画像

---



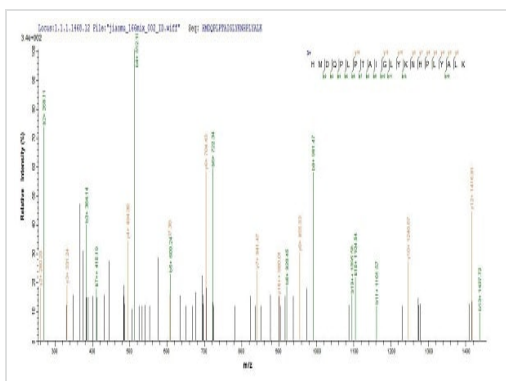
SDS-PAGE - Recombinant Human XPC protein (His tag) (ab236173)

(Tris-Glycine gel) Discontinuous SDS-PAGE (reduced) analysis with 5% enrichment gel and 15% separation gel of ab236173.



Mass Spectrometry - Recombinant Human XPC protein (His tag) (ab236173)

Based on the SEQUEST from database of E.coli host and target protein, the LC-MS/MS Analysis result of ab236173 could indicate that this peptide derived from E.coli-expressed Homo sapiens (Human) XPC.



Mass Spectrometry - Recombinant Human XPC protein (His tag) (ab236173)

Based on the SEQUEST from database of E.coli host and target protein, the LC-MS/MS Analysis result of ab236173 could indicate that this peptide derived from E.coli-expressed Homo sapiens (Human) XPC.

**Please note:** All products are "FOR RESEARCH USE ONLY. NOT FOR USE IN DIAGNOSTIC PROCEDURES"

## **Our Abpromise to you: Quality guaranteed and expert technical support**

---

- Replacement or refund for products not performing as stated on the datasheet
- Valid for 12 months from date of delivery
- Response to your inquiry within 24 hours
  
- We provide support in Chinese, English, French, German, Japanese and Spanish
- Extensive multi-media technical resources to help you
- We investigate all quality concerns to ensure our products perform to the highest standards

If the product does not perform as described on this datasheet, we will offer a refund or replacement. For full details of the Abpromise, please visit <https://www.abcam.co.jp/abpromise> or contact our technical team.

## **Terms and conditions**

---

- Guarantee only valid for products bought direct from Abcam or one of our authorized distributors