

Recombinant human Wee1 protein (Tagged) ab271795

画像数 2

製品の詳細

製品名	Recombinant human Wee1 protein (Tagged)
生理活性	Specific Activity: ≥42 pmol/min/μg Assay Conditions: Assay was done in Kinase buffer containing 1 mM DTT using Poly-(Lys4:Tyr) substrate (0.2 mg/ml) and 20 μM ATP. Reaction was done at 30°C for 45 min. Amount of ATP transferred was calculated using Kinase-Glo reagent.
精製度	≥ 75 % SDS-PAGE. Affinity purified.
発現系	Baculovirus infected Sf9 cells
アクセッション番号	<u>P30291</u>
タンパク質長	Protein fragment
Animal free	No
由来	Recombinant
生物種	Human
配列	DTEKSGKRE FDVRQTPQVN INPFTPDSLL LHSSGQCRRR KRTYWNSCG EDMEASDYEL EDETRPAKRI TITESNMKSR YTTEFHELEK IGSGEFGSVF KCVKRLDGC I YAIKRSKKPL AGSVDEQNAL REVYAHAVLG QHSHVVRYS AWAEDDHMLI QNEYCNGGSL ADAISENYRI MSYFKEAELK DLLLQVGRGL RYIHMSLVH MDIKPSNIFI SRTSIPNAAS EEGDEDDWAS NKVMFKIGDL GHVTRISSPQ VEEGDSRFLA NEVLQENYTH LPKADIFALA LTVVCAAGAE PLPRNGDQWH EIRQGRLPRI PQVLSQEFTE LLKVMIHDPD ERRPSAMALV KHSVLLSASR KSAEQLRIEL NAEKFKNSLL QKELKKAQMA KAAAEERALF TDRMATRSTT QSNRTSRLIG KKMNRVSLT IY
予測される分子量	75 kDa including tags
領域	215 to 646
タグ	GST tag N-Terminus
配列の追加情報	N-terminal GST-Thrombin-Tag

特性

Our **Abpromise guarantee** covers the use of **ab271795** in the following tested applications.

The application notes include recommended starting dilutions; optimal dilutions/concentrations should be determined by the end user.

アプリケーション	SDS-PAGE Functional Studies
製品の状態	Liquid

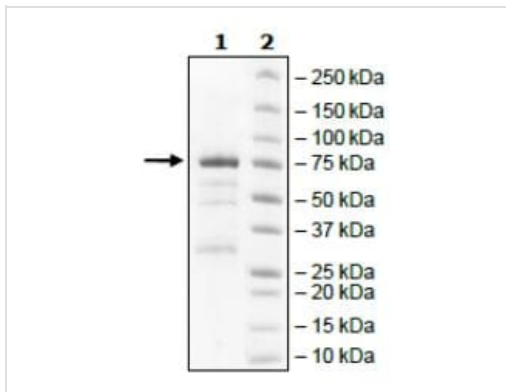
前処理および保存

保存方法および安定性	Shipped on Dry Ice. Store at -80°C. Avoid freeze / thaw cycle. pH: 8.00 Constituents: 0.63% Tris HCl, 0.64% Sodium chloride, 0.02% Potassium chloride, 0.04% Tween, 20% Glycerol (glycerin, glycerine), 0.06% Glutathione This product is an active protein and may elicit a biological response in vivo, handle with caution.
------------	---

関連情報

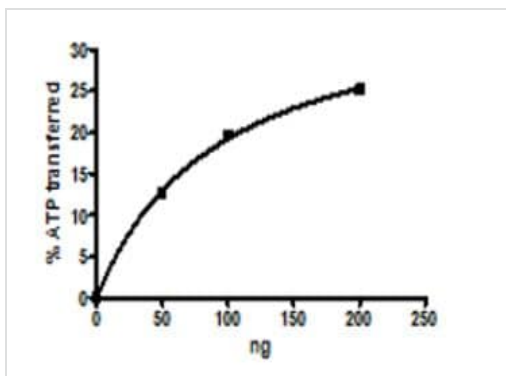
機能	Acts as a negative regulator of entry into mitosis (G2 to M transition) by protecting the nucleus from cytoplasmically activated cyclin B1-complexed CDK1 before the onset of mitosis by mediating phosphorylation of CDK1 on 'Tyr-15'. Specifically phosphorylates and inactivates cyclin B1-complexed CDK1 reaching a maximum during G2 phase and a minimum as cells enter M phase. Phosphorylation of cyclin B1-CDK1 occurs exclusively on 'Tyr-15' and phosphorylation of monomeric CDK1 does not occur. Its activity increases during S and G2 phases and decreases at M phase when it is hyperphosphorylated. A correlated decrease in protein level occurs at M/G1 phase, probably due to its degradation.
配列類似性	Belongs to the protein kinase superfamily. Ser/Thr protein kinase family. WEE1 subfamily. Contains 1 protein kinase domain.
翻訳後修飾	Phosphorylated during M and G1 phases. Also autophosphorylated. Ubiquitinated and degraded at the onset of G2/M phase.
細胞内局在	Nucleus.

画像



SDS-PAGE analysis of ab271795.

SDS-PAGE - Recombinant Human Wee1 protein (Tagged) (ab271795)



Specific activity of ab271795 was ≥ 42 pmol/min/ μ g.

Functional Studies - Recombinant Human Wee1 protein (Tagged) (ab271795)

Please note: All products are "FOR RESEARCH USE ONLY. NOT FOR USE IN DIAGNOSTIC PROCEDURES"

Our Abpromise to you: Quality guaranteed and expert technical support

- Replacement or refund for products not performing as stated on the datasheet
- Valid for 12 months from date of delivery
- Response to your inquiry within 24 hours
- We provide support in Chinese, English, French, German, Japanese and Spanish
- Extensive multi-media technical resources to help you
- We investigate all quality concerns to ensure our products perform to the highest standards

If the product does not perform as described on this datasheet, we will offer a refund or replacement. For full details of the Abpromise, please visit <https://www.abcam.co.jp/abpromise> or contact our technical team.

Terms and conditions

- Guarantee only valid for products bought direct from Abcam or one of our authorized distributors