

Recombinant Human TrkB protein ab174057

画像数 1

製品の詳細

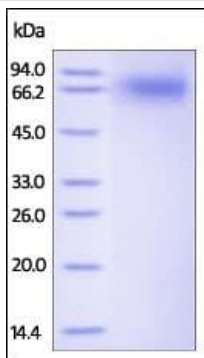
製品名	Recombinant Human TrkB protein
精製度	> 95 % SDS-PAGE.
エンドトキシン・レベル	< 1.000 Eu/μg
発現系	HEK 293 cells
アクセッション番号	<u>Q16620-1</u>
タンパク質長	Protein fragment
Animal free	No
由来	Recombinant
生物種	Human
配列	CPTSCKCSA SRIWCSDPSP GIVAFPRLEP NSVDPENITE IFIANQKRLE IINEDDVEAY VGLRNLTIVD SGLKFVAHKA FLKNSNLQHI NFTRNKLTSL SRKHFRHLDL SELILVGPNF TCSCDIMWIK TLQEAKSSPD TQDLYCLNES SKNIPLANLQ IPNCGLPSAN LAAPNLVVEE GKSITLSCSV AGDPVPNMYW DVGNLVSKHM NETSHTQGSL RITNISSDDS GKQISCVAEN LVGEDQDSVN LTVHFAPTIT FLESPTSDHH WCIPFTVKGN PKPALQWFYN GAILNESKYI CTKIHVTNHT EYHGCLQLDN PTHMNNGDYT LIAKNEYGKD EKQISAHFMG WPGIDDGANP NYPDVIYEDY GTAANDIGDT TNRSNEIPST DVTDKTGREH
予測される分子量	45 kDa including tags
領域	32 to 430
タグ	His tag C-Terminus
配列の追加情報	Extracellular domain.

特性

Our **Abpromise guarantee** covers the use of **ab174057** in the following tested applications.

The application notes include recommended starting dilutions; optimal dilutions/concentrations should be determined by the end user.

アプリケーション	SDS-PAGE
製品の状態	Lyophilized
前処理および保存	
保存方法および安定性	<p>Shipped at 4°C. Store at 4°C prior to reconstitution. Store at -20°C or -80°C. For long term storage it is recommended to add a carrier protein on reconstitution (0.1% HSA or BSA).</p> <p>pH: 7.40</p> <p>Constituents: 5% Trehalose, 95% PBS</p>
再構成	Reconstitute with sterile deionized water to a concentration of 400 µg/ml.
関連情報	
機能	Receptor for brain-derived neurotrophic factor (BDNF), neurotrophin-3 and neurotrophin-4/5 but not nerve growth factor (NGF). Involved in the development and/or maintenance of the nervous system. This is a tyrosine-protein kinase receptor. Known substrates for the TRK receptors are SHC1, PI-3 kinase, and PLC-gamma-1.
組織特異性	Isoform TrkB is widely expressed, mainly in the nervous tissue. In the CNS, expression is observed in the cerebral cortex, hippocampus, thalamus, choroid plexus, granular layer of the cerebellum, brain stem, and spinal cord. In the peripheral nervous system, it is expressed in many cranial ganglia, the opthalmic nerve, the vestibular system, multiple facial structures, the submaxillary glands, and dorsal root ganglia. Isoform TrkB-T1 is expressed in multiple tissues, mainly in brain, pancreas, kidney and heart. Isoform TrkB-T-Shc is predominantly expressed in brain.
配列類似性	<p>Belongs to the protein kinase superfamily. Tyr protein kinase family. Insulin receptor subfamily. Contains 2 Ig-like C2-type (immunoglobulin-like) domains.</p> <p>Contains 2 LRR (leucine-rich) repeats.</p> <p>Contains 1 LRRCT domain.</p> <p>Contains 1 LRRNT domain.</p> <p>Contains 1 protein kinase domain.</p>
翻訳後修飾	Ligand-mediated auto-phosphorylation.
細胞内局在	Membrane.
画像	



SDS-PAGE - Recombinant Human TrkB protein
(ab174057)

The purity of ab174057 was determined by reduced SDS-PAGE and staining overnight with Coomassie Blue. DTT-reduced ab174057 migrates at 60-90 kDa due to glycosylation (predicted MW with tag of 45kDa).

Please note: All products are "FOR RESEARCH USE ONLY. NOT FOR USE IN DIAGNOSTIC PROCEDURES"

Our Abpromise to you: Quality guaranteed and expert technical support

- Replacement or refund for products not performing as stated on the datasheet
- Valid for 12 months from date of delivery
- Response to your inquiry within 24 hours
- We provide support in Chinese, English, French, German, Japanese and Spanish
- Extensive multi-media technical resources to help you
- We investigate all quality concerns to ensure our products perform to the highest standards

If the product does not perform as described on this datasheet, we will offer a refund or replacement. For full details of the Abpromise, please visit <https://www.abcam.co.jp/abpromise> or contact our technical team.

Terms and conditions

- Guarantee only valid for products bought direct from Abcam or one of our authorized distributors