

Recombinant Human TRF1 protein ab116406

画像数 1

製品の詳細

製品名	Recombinant Human TRF1 protein
精製度	> 90 % SDS-PAGE.
発現系	Escherichia coli
アクセッション番号	<u>P54274-2</u>
タンパク質長	Full length protein
Animal free	No
由来	Recombinant
生物種	Human
予測される分子量	77 kDa including tags
領域	1 to 419

特性

Our **Abpromise guarantee** covers the use of **ab116406** in the following tested applications.

The application notes include recommended starting dilutions; optimal dilutions/concentrations should be determined by the end user.

アプリケーション	Western blot
	ELISA
	SDS-PAGE
	Mass Spectrometry
質量分析	MALDI-TOF-TOF
製品の状態	Liquid

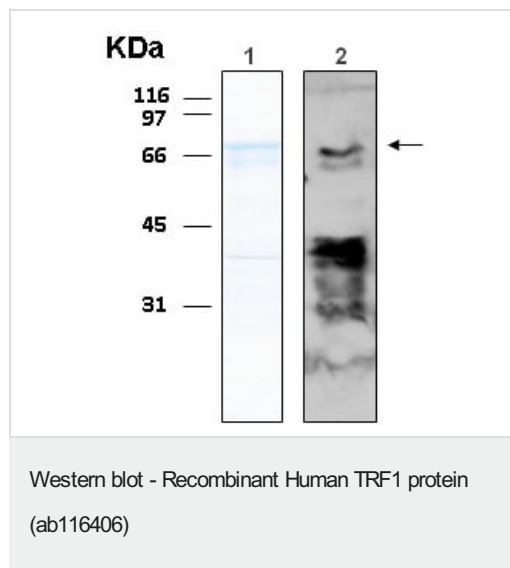
前処理および保存

保存方法および安定性	Shipped on dry ice. Upon delivery aliquot and store at -80°C. Avoid freeze / thaw cycles.
	pH: 7.40
	Constituent: 99% PBS

関連情報

機能	Binds the telomeric double-stranded TTAGGG repeat and negatively regulates telomere length. Involved in the regulation of the mitotic spindle. Component of the shelterin complex (telosome) that is involved in the regulation of telomere length and protection. Shelterin associates with arrays of double-stranded TTAGGG repeats added by telomerase and protects chromosome ends; without its protective activity, telomeres are no longer hidden from the DNA damage surveillance and chromosome ends are inappropriately processed by DNA repair pathways.
組織特異性	Highly expressed and ubiquitous. Isoform Pin2 predominates.
配列類似性	Contains 1 HTH myb-type DNA-binding domain.
ドメイン	The acidic N-terminal domain binds to the ankyrin repeats of TNKS1 and TNKS2. The C-terminal domain binds microtubules. The TRFH dimerization region mediates the interaction with TIN2.
翻訳後修飾	Phosphorylated preferentially on Ser-219 in an ATM-dependent manner in response to ionizing DNA damage. ADP-ribosylation by TNKS1 or TNKS2 diminishes its ability to bind to telomeric DNA. Ubiquitinated by RLIM/RNF12, leading to its degradation by the proteasome. Ubiquitinated by a SCF (SKP1-CUL1-F-box protein) ubiquitin-protein ligase complex, leading to its degradation by the proteasome.
細胞内局在	Nucleus. Cytoplasm > cytoskeleton > spindle. Chromosome > telomere. Colocalizes with telomeric DNA in interphase and metaphase cells and is located at chromosome ends during metaphase. Associates with the mitotic spindle.

画像



10% SDS-PAGE stained with Coomassie Blue (Lane 1),
immunoblotting with anti-6xHis (Lane 2)

Please note: All products are "FOR RESEARCH USE ONLY. NOT FOR USE IN DIAGNOSTIC PROCEDURES"

Our Abpromise to you: Quality guaranteed and expert technical support

- Replacement or refund for products not performing as stated on the datasheet
- Valid for 12 months from date of delivery

- Response to your inquiry within 24 hours
- We provide support in Chinese, English, French, German, Japanese and Spanish
- Extensive multi-media technical resources to help you
- We investigate all quality concerns to ensure our products perform to the highest standards

If the product does not perform as described on this datasheet, we will offer a refund or replacement. For full details of the Abpromise, please visit <https://www.abcam.co.jp/abpromise> or contact our technical team.

Terms and conditions

- Guarantee only valid for products bought direct from Abcam or one of our authorized distributors