

Recombinant Human TPPP protein ab167958

画像数 1

製品の詳細

製品名	Recombinant Human TPPP protein		
精製度	> 85 % Densitometry. ab167958 was purified using Ni-NTA chromatography and filtered (0.4 µm).		
エンドキシン・レベル	< 1.000 Eu/µg		
発現系	Escherichia coli		
アクセッション番号	<u>O94811</u>		
タンパク質長	Full length protein		
Animal free	No		
由来	Recombinant		
生物種	Human		
配列	MKHHHHHHAS MADKAKPAKA ANRTPPKSPG DPSKDRAAKR LSLESEGAGE GAAASPELSA LEEAFRRFAV HGDARATGRE MHGKNWSKLC KDCQVIDGRN VTVTDVDIVF SKIKGKSCRT ITFEQFQEAL EELAKKRFKD KSSEEAVREV HRLIEGKAPI ISGVTKAISS PTVSRLTDTT KFTGSHKERF DPSGKGKGKA GRVDLVDESG YVSGYKHAGT YDQKVQGGK		
予測される分子量	25 kDa including tags		
領域	1 to 219		
タグ	His tag N-Terminus		

特性

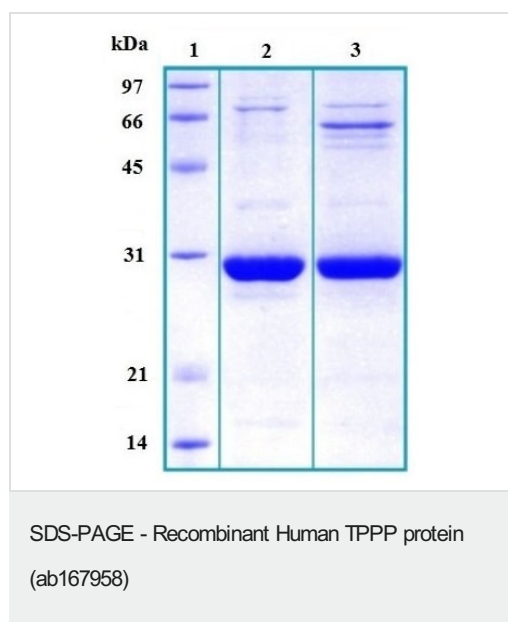
Our **Abpromise guarantee** covers the use of **ab167958** in the following tested applications.

The application notes include recommended starting dilutions; optimal dilutions/concentrations should be determined by the end user.

アプリケーション	Western blot
	ELISA
	Mass Spectrometry
	SDS-PAGE
質量分析	LC-MS/MS

製品の状態	Lyophilized
備考	Previously labelled as Tubulin Polymerization Promoting Protein.
前処理および保存	
保存方法および安定性	Shipped at 4°C. Store at -80°C. Constituents: 99% Phosphate Buffer, 0.43% Sodium chloride
再構成	Add 200 µl of deionized water to prepare a working stock solution of 0.5 mg/ml and let the lyophilized pellet dissolve completely. Aliquot reconstituted protein to avoid repeated freezing/thawing cycles and store at -80°C for long term storage. Product is not sterile! Please filter the product by an appropriate sterile filter before using it in the cell culture.
関連情報	
機能	May play a role in the polymerization of tubulin into microtubules, microtubule bundling and the stabilization of existing microtubules, thus maintaining the integrity of the microtubule network. May play a role in mitotic spindle assembly and nuclear envelope breakdown.
組織特異性	Widely expressed.
配列類似性	Belongs to the TPPP family.
翻訳後修飾	Poor substrate for GSK3 (By similarity). Phosphorylated by LIMK1 on serine residues. Phosphorylation may alter the tubulin polymerization activity.
細胞内局在	Cytoplasm. Cytoplasm, cytoskeleton. Nucleus. Localizes to glial Lewy bodies in the brains of individuals with synucleinopathies.

画像



12% SDS-PAGE analysis of ab167958:

Lane 1: MWt marker

Lane 2: reduced and boiled sample, 2.5 µg

Lane 3: non-reduced and non-boiled sample, 2.5 µg

Our Abpromise to you: Quality guaranteed and expert technical support

- Replacement or refund for products not performing as stated on the datasheet
- Valid for 12 months from date of delivery
- Response to your inquiry within 24 hours
- We provide support in Chinese, English, French, German, Japanese and Spanish
- Extensive multi-media technical resources to help you
- We investigate all quality concerns to ensure our products perform to the highest standards

If the product does not perform as described on this datasheet, we will offer a refund or replacement. For full details of the Abpromise, please visit <https://www.abcam.co.jp/abpromise> or contact our technical team.

Terms and conditions

- Guarantee only valid for products bought direct from Abcam or one of our authorized distributors