

Recombinant Human TNFSF12 Protein (Active) ab283416

画像数 2

製品の詳細

製品名	Recombinant Human TNFSF12 Protein (Active)
生理活性	Fully biologically active determined by its ability to dose dependently proliferate human umbilical vein endothelial cells (HUVECs). ED ₅₀ is ≤16.7 ng/ml, corresponding to a specific activity of 6.1x10 ⁵ units/mg.
精製度	≥ 95 % SDS-PAGE.
エンドキシン・レベル	≤0.005 Eu/μg
発現系	HEK 293 cells
アクセッション番号	<u>O43508</u>
タンパク質長	Protein fragment
Animal free	Yes
キャリア・フリー	はい
由来	Recombinant
生物種	Human
配列	RSAPKGRKTRARRAIAAHYEVHPRPGDGAQAGVDGTVSGWE EARINSSS PLRYNRQIGEFIVTRAGLYYLYCQVHFDEGKAVYLLDLLVD GVLALRCL EEFSATAASSLGPQLRLCQVSGLLALRPGSSLRIRTLPAHL KAAPFLTY FGLFQVH
予測される分子量	17 kDa
領域	93 to 249
配列の追加情報	N-terminal glycine Accession: Q4ACW9/O43508

特性

Our **Abpromise guarantee** covers the use of **ab283416** in the following tested applications.

The application notes include recommended starting dilutions; optimal dilutions/concentrations should be determined by the end user.

アプリケーション	SDS-PAGE
製品の状態	Lyophilized

前処理および保存

保存方法および安定性

Shipped at Room Temperature. Store at Room Temperature.

pH: 7.4

Constituents: 0.727% Dibasic monohydrogen potassium phosphate, 0.248% Monobasic dihydrogen potassium phosphate, 10.26% Trehalose

This product is an active protein and may elicit a biological response in vivo, handle with caution.

再構成

Reconstitute with Phosphate Buffered Saline. Store lyophilized form at room temperature. Reconstitute, aliquot and store at -80°C for 12 months or +4°C for 1 week. Avoid repeated freeze-thaw. Lyophilized contents may appear as either a translucent film or a white powder. This variance does not affect the quality of the product.

関連情報

機能

Binds to FN14 and possibly also to TNFRSF12/APO3. Weak inducer of apoptosis in some cell types. Mediates NF-kappa-B activation. Promotes angiogenesis and the proliferation of endothelial cells. Also involved in induction of inflammatory cytokines.

組織特異性

Highly expressed in adult heart, pancreas, skeletal muscle, brain, colon, small intestine, lung, ovary, prostate, spleen, lymph node, appendix and peripheral blood lymphocytes. Low expression in kidney, testis, liver, placenta, thymus and bone marrow. Also detected in fetal kidney, liver, lung and brain.

配列類似性

Belongs to the tumor necrosis factor family.

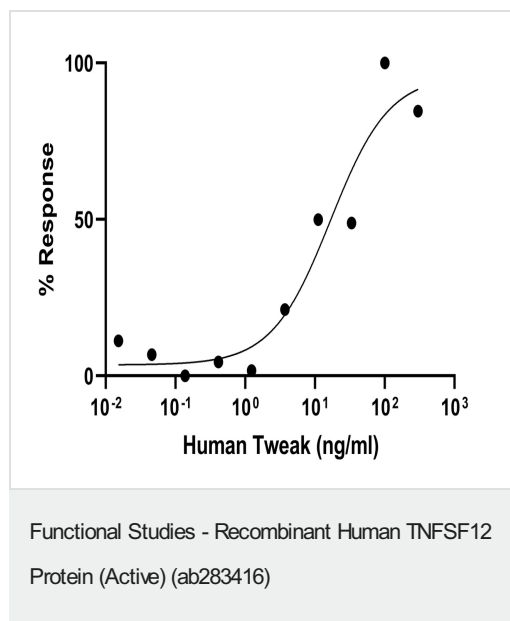
翻訳後修飾

The soluble form derives from the membrane form by proteolytic processing.

細胞内局在

Secreted and Cell membrane.

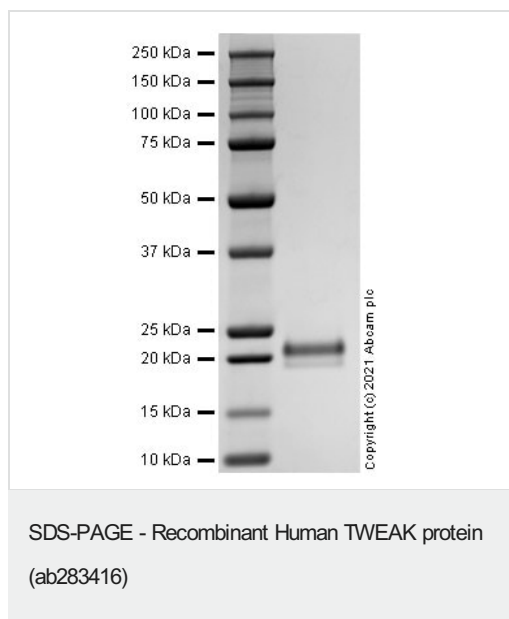
画像



Fully biologically active determined by its ability to dose dependently proliferate human umbilical vein endothelial cells (HUVECs). ED₅₀ is ≤16.7 ng/ml, corresponding to a specific activity of 6.1x10⁵ units/mg.

Cell based assay testing is performed on the first lot of protein only and is provided as a reference for protein activity; subsequent lots of protein must pass all biophysical quality control parameters that meet the same parameters as the first lot.

Lot GR3398997-2



SDS-PAGE analysis of ab283416.

Please note: All products are "FOR RESEARCH USE ONLY. NOT FOR USE IN DIAGNOSTIC PROCEDURES"

Our Abpromise to you: Quality guaranteed and expert technical support

- Replacement or refund for products not performing as stated on the datasheet
- Valid for 12 months from date of delivery
- Response to your inquiry within 24 hours
- We provide support in Chinese, English, French, German, Japanese and Spanish
- Extensive multi-media technical resources to help you
- We investigate all quality concerns to ensure our products perform to the highest standards

If the product does not perform as described on this datasheet, we will offer a refund or replacement. For full details of the Abpromise, please visit <https://www.abcam.co.jp/abpromise> or contact our technical team.

Terms and conditions

- Guarantee only valid for products bought direct from Abcam or one of our authorized distributors