

Recombinant Human STAT3 protein ab43618

7 References [画像数 1](#)

製品の詳細

製品名	Recombinant Human STAT3 protein
精製度	> 70 % Affinity purified. Purified by affinity chromatography
発現系	Baculovirus infected Sf9 cells
タンパク質長	Full length protein
Animal free	No
由来	Recombinant
生物種	Human

MSPILGWYKI KGLVQPTRL L LEYLEEKYEE
HLYERDEGDK WRNKKFELGL EFPNLPYYID
GDVKLTQSMA IIRYIADKHN MLGGCPKERA
EISMLEGAVL DIRYGVSRIA YSKDFETLKV
DFLSKLP EML KMFEDRLCHK TYLNGDHVTH
PDFMLYDALD VVLYMDPMCL DAFPKLVCFK
KRIEAIPQID KYLKSSKYIA WPLQGQATF
GGGDHPPKSD LVPRGSPEF MAQWNQLQQL DTRYLEQLHQ
LYSDSFP MEL RQFLAPWIES QDWAYAASKE
SHATLVFHNL LGEIDQQYSR FLQESNVLYQ
HNLRRIKQFL QSRYLEK PME IARIVARCLW
EESRLLQTAA TAAQQGGQAN HPTAAVVTEK
QQMLEQHLQD VRKRVDLEQ KMKVVENLQD
DFDFNYKTLK SQGDMQDLNG NNQSVTRQKM
QQLEQMLTAL DQMRRSIVSE LAGLLSAMEY
VQKTLTDEEL ADWKRRQQIA CIGGPPNICL
DRLENWITSL AESQLQTRQQ IKKLEELQK
VSYKGDPIVQ HRPML EERIV ELFRNLMKSA
FVVERQPCMP MHPDRPLVIK TGVQFTTKVR
LLVKFPELNY QLKIKVCIDK DSGDVAALRG
SRKFNILGTN TKVMNMEESN NGSLSAEFKH
LTLREQRCGN GGRANCDASL IVTEELHLIT
FETEVYHQGL KIDLETHSLP VVVISNICQM
PNAWASILWY NMLTNNPKNV NFFTKPPIGT
WDQVAEVL SW QFSSTTKRGL SIEQLTTLAE
KLLGPGVNYS GCQITWAKFC KENMAGKGFS

FWVWLDNIID LVKKYILALW NEGYIMGFIS
KERERAILST KPPGTFLLRF SESSKEGGVT
FTWVEKDISG KTQIQSVEPY TKQQLNMSF
AEIIMGYKIM DATNILVSPL VYLYPDIPKE
EAFGKYCRPE SQEHPEADPG SAAPYLKTKF
ICVTPPTCSN TIDLPMSPRT LDQLMQFGNN
GEGAEPSAGG QFESLTFDME LTSECATSPM

予測される分子量 120 kDa
タグ GST tag N-Terminus

特性

Our **Abpromise guarantee** covers the use of **ab43618** in the following tested applications.

The application notes include recommended starting dilutions; optimal dilutions/concentrations should be determined by the end user.

アプリケーション Western blot
製品の状態 Liquid
備考 Recombinant full-length human STAT3 was expressed by baculovirus in Sf9 insect cells using an N-terminal GST tag.

前処理および保存

保存方法および安定性 Shipped on dry ice. Upon delivery aliquot and store at -80°C. Avoid freeze / thaw cycles.
pH: 7.50
Constituents: 0.87% Sodium chloride, 25% Glycerol, 0.79% Tris HCl, 0.00385% DTT, 0.00174% PMSF, 0.31% Glutathione, 0.003% EDTA

関連情報

機能 Signal transducer and transcription activator that mediates cellular responses to interleukins, KITLG/SCF, LEP and other growth factors. Once activated, recruits coactivators, such as NCOA1 or MED1, to the promoter region of the target gene (PubMed:17344214). May mediate cellular responses to activated FGFR1, FGFR2, FGFR3 and FGFR4. Binds to the interleukin-6 (IL-6)-responsive elements identified in the promoters of various acute-phase protein genes. Activated by IL31 through IL31RA. Involved in cell cycle regulation by inducing the expression of key genes for the progression from G1 to S phase, such as CCND1 (PubMed:17344214). Mediates the effects of LEP on melanocortin production, body energy homeostasis and lactation (By similarity). May play an apoptotic role by transactivating BIRC5 expression under LEP activation (PubMed:18242580). Cytoplasmic STAT3 represses macroautophagy by inhibiting EIF2AK2/PKR activity.

組織特異性 Heart, brain, placenta, lung, liver, skeletal muscle, kidney and pancreas.

関連疾患 Hyperimmunoglobulin E recurrent infection syndrome, autosomal dominant Autoimmune disease, multisystem, infantile-onset

配列類似性 Belongs to the transcription factor STAT family.
Contains 1 SH2 domain.

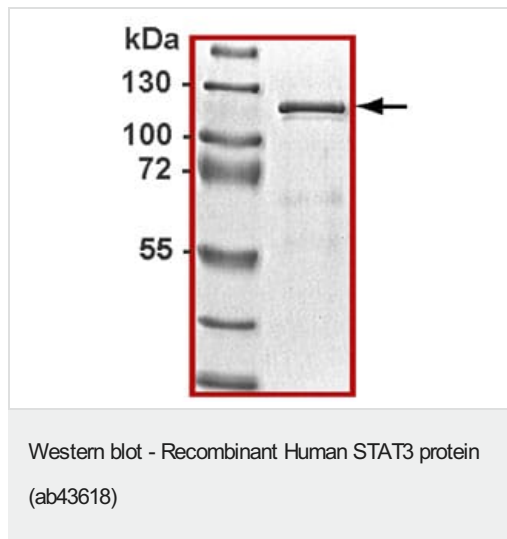
翻訳後修飾 Tyrosine phosphorylated upon stimulation with EGF. Tyrosine phosphorylated in response to constitutively activated FGFR1, FGFR2, FGFR3 and FGFR4 (By similarity). Activated through

tyrosine phosphorylation by BMX. Tyrosine phosphorylated in response to IL6, IL11, LIF, CNTF, KITLG/SCF, CSF1, EGF, PDGF, IFN-alpha, LEP and OSM. Activated KIT promotes phosphorylation on tyrosine residues and subsequent translocation to the nucleus. Phosphorylated on serine upon DNA damage, probably by ATM or ATR. Serine phosphorylation is important for the formation of stable DNA-binding STAT3 homodimers and maximal transcriptional activity. ARL2BP may participate in keeping the phosphorylated state of STAT3 within the nucleus. Upon LPS challenge, phosphorylated within the nucleus by IRAK1. Upon erythropoietin treatment, phosphorylated on Ser-727 by RPS6KA5. Phosphorylation at Tyr-705 by PTK6 or FER leads to an increase of its transcriptional activity. Dephosphorylation on tyrosine residues by PTPN2 negatively regulates IL6/interleukin-6 signaling.

細胞内局在

Cytoplasm. Nucleus. Shuttles between the nucleus and the cytoplasm. Translocated into the nucleus upon tyrosine phosphorylation and dimerization, in response to signaling by activated FGFR1, FGFR2, FGFR3 or FGFR4. Constitutive nuclear presence is independent of tyrosine phosphorylation. Predominantly present in the cytoplasm without stimuli. Upon leukemia inhibitory factor (LIF) stimulation, accumulates in the nucleus. The complex composed of BART and ARL2 plays an important role in the nuclear translocation and retention of STAT3. Identified in a complex with LYN and PAG1.

画像



Demonstration of protein purity (>90%) by western blot.

Please note: All products are "FOR RESEARCH USE ONLY. NOT FOR USE IN DIAGNOSTIC PROCEDURES"

Our Abpromise to you: Quality guaranteed and expert technical support

- Replacement or refund for products not performing as stated on the datasheet
- Valid for 12 months from date of delivery
- Response to your inquiry within 24 hours
- We provide support in Chinese, English, French, German, Japanese and Spanish
- Extensive multi-media technical resources to help you
- We investigate all quality concerns to ensure our products perform to the highest standards

If the product does not perform as described on this datasheet, we will offer a refund or replacement. For full details of the Abpromise,

please visit <https://www.abcam.co.jp/abpromise> or contact our technical team.

Terms and conditions

- Guarantee only valid for products bought direct from Abcam or one of our authorized distributors