

Recombinant Human ST14 protein ab114597

画像数 1

製品の詳細

製品名	Recombinant Human ST14 protein
発現系	Wheat germ
アクセッション番号	Q9Y5Y6
タンパク質長	Full length protein
Animal free	No
由来	Recombinant
生物種	Human
配列	MGSDRARKGGGGPKDFGAGLKYNSRHEKVNGLEEGVEFLPVN NVKKVEKH GPGRWVLA AVLIGLLL VLLGIGFLVWHLQYRDVRVQKVFNG YMRITNEN FVDAYENSNSTEFVSLASKVKDALKLLYSGVPFLGPYHKESA VTAFSEGS VIAYYWSEFSIPQHLVEEAERVMAEERVVMLPPRARSLKSFV VTSVVAFP TDSKTVQRTQDNCSFGLHARGVELMRFTTPGFDPSPYPAHA RCQWALRG DADSVLSLTFRFDLASC DERGSDLVTVYNTLSPMEPHALVQ LCGTYP YNLTFHSSQNVLLITLITNTERRHPGFEATFFQLPRMSSCGG RLRKAQGT FNSPYYPGHYPPNIDCTWNI EVPNNQHVKVRKFFYLLEPGV PAGTCPKD YVEINGEKYCGERSQFVVTSNSNKITVRFHSDQSYTDTGFLA EYLSYDSS DPCPGQFTCR TGRCIRKELRCDGWADCTDHSDELNCSCDAGH QFTCKNKF CKPLFWVCDSVND CGDNSDEQGCSCPAQTFRC SNGKCLS KSKQ QCNGKDDC GDGSDEASCPKVNVTCTKHTYRCLNGLCLSKGNPECDGKED CSDGSDEK DCDCGLRSFTRQARVVGTTDADEGEWPQVSLHALGQGHICG ASLISP LVSAAHCYIDDRGFRYSDPTQWTAFLGLHDQSQRSAPGVQER RLKRIISH

PFFNDFTFDYDIALLELEKPAEYSSMVRPICLPDASHVFPAG
KAIWVTGW
GHTQYGGTGALILQKGEIRVINQTTCEENLLPQQITPRMCMVG
FLSGGVDS
CQGDSGGPLSSVEADGRIFQAGVVSWDGCAQRNKPQVYTRL
PLFRDWIK ENTGV

予測される分子量 120 kDa including tags
領域 1 to 855

特性

Our **Abpromise guarantee** covers the use of **ab114597** in the following tested applications.

The application notes include recommended starting dilutions; optimal dilutions/concentrations should be determined by the end user.

アプリケーション ELISA
SDS-PAGE
Western blot

製品の状態 Liquid

前処理および保存

保存方法および安定性 Shipped on dry ice. Upon delivery aliquot and store at -80°C. Avoid freeze / thaw cycles.
pH: 8.00
Constituents: 0.3% Glutathione, 0.79% Tris HCl

関連情報

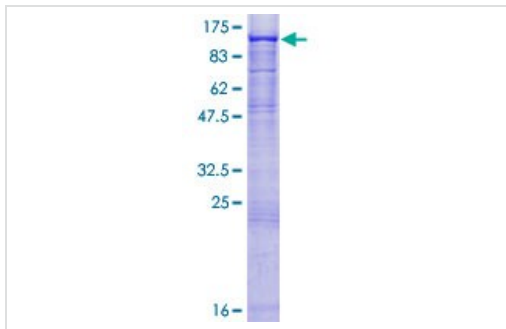
機能 Degrades extracellular matrix. Proposed to play a role in breast cancer invasion and metastasis. Exhibits trypsin-like activity as defined by cleavage of synthetic substrates with Arg or Lys as the P1 site.

関連疾患 Defects in ST14 are a cause of ichthyosis autosomal recessive with hypotrichosis (ARIH) [MIM:610765]. ARIH is a skin disorder characterized by congenital ichthyosis associated with the presence of less than the normal amount of hair.

配列類似性 Belongs to the peptidase S1 family.
Contains 2 CUB domains.
Contains 4 LDL-receptor class A domains.
Contains 1 peptidase S1 domain.

細胞内局在 Membrane.

画像



ab114597 analysed on a 12.5% SDS-PAGE gel stained with Coomassie Blue.

SDS-PAGE - Recombinant Human ST14 protein
(ab114597)

Please note: All products are "FOR RESEARCH USE ONLY. NOT FOR USE IN DIAGNOSTIC PROCEDURES"

Our Abpromise to you: Quality guaranteed and expert technical support

- Replacement or refund for products not performing as stated on the datasheet
- Valid for 12 months from date of delivery
- Response to your inquiry within 24 hours
- We provide support in Chinese, English, French, German, Japanese and Spanish
- Extensive multi-media technical resources to help you
- We investigate all quality concerns to ensure our products perform to the highest standards

If the product does not perform as described on this datasheet, we will offer a refund or replacement. For full details of the Abpromise, please visit <https://www.abcam.co.jp/abpromise> or contact our technical team.

Terms and conditions

- Guarantee only valid for products bought direct from Abcam or one of our authorized distributors