

Recombinant human Sps1/Ste20 related kinase 4 protein ab190389

画像数 4

製品の詳細

製品名	Recombinant human Sps1/Ste20 related kinase 4 protein
生理活性	The specific activity of ab190389 was determined to be 38 nmol/min/mg.
精製度	> 80 % Densitometry. Affinity purified.
発現系	Baculovirus infected Sf9 cells
アクセッション番号	<u>Q56UN5</u>
タンパク質長	Protein fragment
Animal free	No
由来	Recombinant
生物種	Human
配列	MFGKTLSGTNSISQEIIMDSVNNEELTDELLGCLAAELLALDE KDNNSCQK MANETDPENLNLVLRWRGSTPKEMGRETTKVKIQRHSSGLRI YDREEKFL ISNEKKIFSENSLKSEEPILWTKGEILGKGAYGTVYCGLTSQ GQLIAVKQ VALDTSNKLA AEKEYRKLQEEVDLLKALKHVNIVAYLGTCLQ ENTVSIFM EFVPGGSISSIINRFGPLPEMVFCKYTKQILQGVAYLHENCV VHRDIKGN NVMLMPTGIIKLIIDFGCARRLAWAGLNGTHSDMLKSMHGTPY WMAPEVIN ESGYGRKSDIWSIGCTVFEMATGKPPLASMDRMAAMFYIGAH RGLMPPLP DHFSENAADFVRMCLTRDQHERPSALQLLKHSFLERSH
予測される分子量	83 kDa including tags
領域	941 to 1328
タグ	proprietary tag N-Terminus
配列の追加情報	NM_025052.

特性

Our **Abpromise guarantee** covers the use of **ab190389** in the following tested applications.

The application notes include recommended starting dilutions; optimal dilutions/concentrations should be determined by the end user.

アプリケーション

Functional Studies

SDS-PAGE

Western blot

製品の状態

Liquid

備考

ab64311 (Myelin Basic Protein protein) can be utilized as a substrate for assessing kinase activity

前処理および保存

保存方法および安定性

Shipped on Dry Ice. Upon delivery aliquot. Store at -80°C. Avoid freeze / thaw cycle.

pH: 7.50

Constituents: 0.79% Tris HCl, 0.87% Sodium chloride, 0.1% Glutathione, 0.003% EDTA, 0.004% DTT, 0.002% PMSF, 25% Glycerol (glycerin, glycerine)

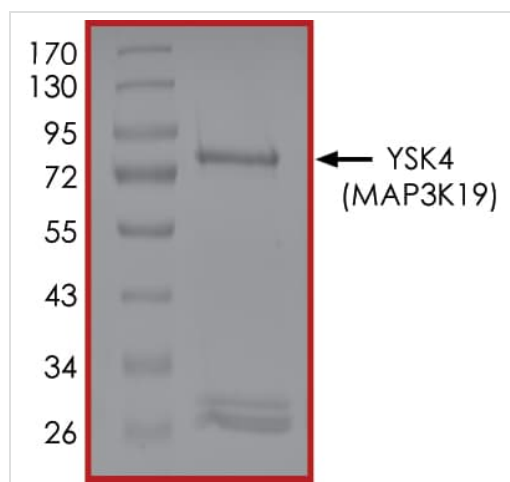
This product is an active protein and may elicit a biological response in vivo, handle with caution.

関連情報

関連性

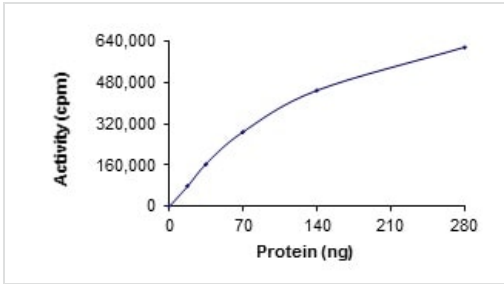
Sps1/Ste20 related kinase 4 belongs to the protein kinase superfamily. STE Ser/Thr protein kinase family, STE20 subfamily. It contains one protein kinase domain. There are six isoforms.

画像



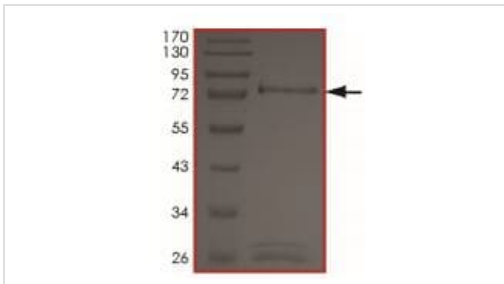
SDS PAGE analysis of ab190389

SDS-PAGE - Recombinant human Sps1/Ste20 related kinase 4 protein (ab190389)



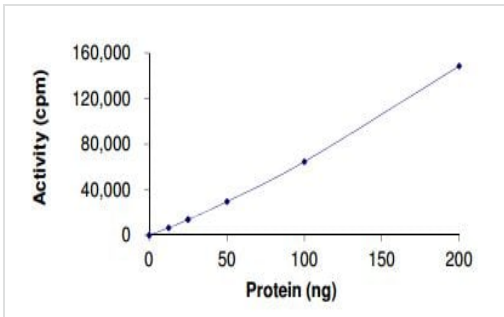
The specific activity of Sps1/Ste20 related kinase 4 (ab190389) was determined to be 44 nmol/min/mg as per activity assay protocol.

Functional Studies - Recombinant human Sps1/Ste20 related kinase 4 protein (ab190389)



SDS-PAGE analysis of ab190389.

SDS-PAGE - Recombinant human Sps1/Ste20 related kinase 4 protein (ab190389)



Kinase assay showing the specific activity of ab 190389 as 38 nmol/min/mg.

Functional Studies - Recombinant human Sps1/Ste20 related kinase 4 protein (ab190389)

Please note: All products are "FOR RESEARCH USE ONLY. NOT FOR USE IN DIAGNOSTIC PROCEDURES"

Our Abpromise to you: Quality guaranteed and expert technical support

- Replacement or refund for products not performing as stated on the datasheet
- Valid for 12 months from date of delivery
- Response to your inquiry within 24 hours
- We provide support in Chinese, English, French, German, Japanese and Spanish

- Extensive multi-media technical resources to help you
- We investigate all quality concerns to ensure our products perform to the highest standards

If the product does not perform as described on this datasheet, we will offer a refund or replacement. For full details of the Abpromise, please visit <https://www.abcam.co.jp/abpromise> or contact our technical team.

Terms and conditions

- Guarantee only valid for products bought direct from Abcam or one of our authorized distributors