

### Recombinant Human SorLA/SORL1 protein ab114683

画像数 1

#### 製品の詳細

製品名	Recombinant Human SorLA/SORL1 protein
発現系	Wheat germ
アクセッション番号	<b><u>Q92673</u></b>
タンパク質長	Protein fragment
Animal free	No
由来	Recombinant
生物種	Human
配列	SAALQPEPIKVYGGVSLNDSHNQMVVHWAGEKSNVIVALARD SLALARPK SSDVYVSYDYGKSFKKISDKLNFG LGNRSEAVIAQFYHSPAD NKRYIFAD
予測される分子量	37 kDa including tags
領域	82 to 181
タグ	GST tag N-Terminus

#### 特性

Our **Abpromise guarantee** covers the use of **ab114683** in the following tested applications.

The application notes include recommended starting dilutions; optimal dilutions/concentrations should be determined by the end user.

アプリケーション	Western blot SDS-PAGE ELISA
製品の状態	Liquid
備考	This product was previously labelled as SorLA.

#### 前処理および保存

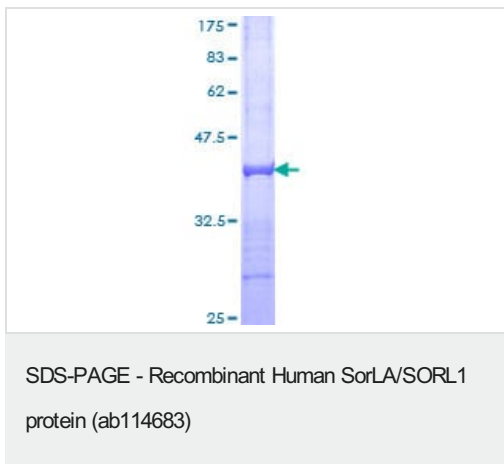
保存方法および安定性	Shipped on dry ice. Upon delivery aliquot and store at -80°C. Avoid freeze / thaw cycles. pH: 8.00
------------	---

Constituents: 0.3% Glutathione, 0.79% Tris HCl

## 関連情報

機能	Likely to be a multifunctional endocytic receptor, that may be implicated in the uptake of lipoproteins and of proteases. Binds LDL, the major cholesterol-carrying lipoprotein of plasma, and transports it into cells by endocytosis. Binds the receptor-associated protein (RAP). Could play a role in cell-cell interaction.
組織特異性	Expressed mainly in brain, where it is most abundant in the cerebellum, cerebral cortex and the occipital pole; low expression in the putamen and the thalamus. According to PubMed:9157966, found in spinal cord, testis, liver, kidney and pancreas with detectable levels in placenta, lung and heart. According to PubMed:8940146, expressed in the prostate, ovary, thyroid and spleen, but not found in kidney, liver, lung, skeletal muscle, bone marrow and adrenals.
配列類似性	Belongs to the SORL1 family. Contains 5 BNR repeats. Contains 1 EGF-like domain. Contains 6 fibronectin type-III domains. Contains 11 LDL-receptor class A domains. Contains 5 LDL-receptor class B repeats.
翻訳後修飾	The propeptide removed in the N-terminus may be cleaved by furin or homologous proteases.
細胞内局在	Membrane.

## 画像



ab114683 analysed on a 12.5% SDS-PAGE gel stained with Coomassie Blue.

**Please note:** All products are "FOR RESEARCH USE ONLY. NOT FOR USE IN DIAGNOSTIC PROCEDURES"

## Our Abpromise to you: Quality guaranteed and expert technical support

- Replacement or refund for products not performing as stated on the datasheet
- Valid for 12 months from date of delivery
- Response to your inquiry within 24 hours
- We provide support in Chinese, English, French, German, Japanese and Spanish

- Extensive multi-media technical resources to help you
- We investigate all quality concerns to ensure our products perform to the highest standards

If the product does not perform as described on this datasheet, we will offer a refund or replacement. For full details of the Abpromise, please visit <https://www.abcam.co.jp/abpromise> or contact our technical team.

#### **Terms and conditions**

---

- Guarantee only valid for products bought direct from Abcam or one of our authorized distributors