

Recombinant Human SF3A1 protein ab160931

[1 References](#) [画像数 1](#)

製品の詳細

| | |
|-------------|---|
| 製品名 | Recombinant Human SF3A1 protein |
| 発現系 | Wheat germ |
| タンパク質長 | Full length protein |
| Animal free | No |
| 由来 | Recombinant |
| 生物種 | Human |
| 配列 | MPAGPVQAVPPPPVPTEPKQPTEEEASSKEDSAPSKPVVGI IYPPPEVR NIVDKTASFVARGPEFEARIRQNEINNPKNFLNPNDPYHA YYRHKVSE FKEGKAQEPSAAIPKVMQQQQTTQQQLPQKVQAQVIQETIV PKEPPPEF EFIADPPSISAFDLDVVKLTAQFVARNGRQFLTQLMQKEQRN YQFDLFRP QHSLFNYFTKLVEQYTKILIPPKGLFSKLLKEAENPREVLDQ VCYRVEWA KFQERERKKEEEEKEKERVAYAQIDWHDFVVVETVDFQPNEQ GNFPPTT PEELGARILIQERYEKFGESEEVEMEVESDEEDDKQEAEPP PSQLDQDT QVQDMDEGSDDEEEGQKVPPPPETPMPPPLPPTPDQVIVRKD YDPKASKP LPPAPAPDEYLVSPITGEKIPASKMQEHMRIGLLDPRWLEQR DRSIREKQ SDDEVYAPGLDIESSLKQLAERRTDIFGVEETAIGKKIGEEE IQKPEEKV TWDGHSGSMARTQQAQANITLQEIEAIHKAKGLVPEDDTK EKIGPSKP NEIPQPPPPSSATNIPSSAPPITSVPRPPTMPPVTRTTVVS AVPVMRP PMASVVRLPPGSVIAPMPPIIHAPRINVVPMPPSAPPIMAPR PPPMIVPT AFVPAPPVAPVPAPAPMPPVHPPPPMEDEPTSKLLKTEDSLM PEEEFLRR NKGPVSIKVQVPMQDKTEWKLNGQVLVFTLPLTDQVSVIKV |

KIHEATGM
PAGKQKLQYEGIFIKDSNSLAYYNMANGAVIHLALKERGGRK
K

領域 1 to 793
タグ GST tag N-Terminus

特性

Our **Abpromise guarantee** covers the use of **ab160931** in the following tested applications.

The application notes include recommended starting dilutions; optimal dilutions/concentrations should be determined by the end user.

アプリケーション Western blot

ELISA

製品の状態 Liquid

備考

前処理および保存

保存方法および安定性 Shipped on dry ice. Upon delivery aliquot and store at -80°C. Avoid freeze / thaw cycles.

pH: 8.00

Constituents: 0.31% Glutathione, 0.79% Tris HCl

関連情報

機能 Subunit of the splicing factor SF3A required for 'A' complex assembly formed by the stable binding of U2 snRNP to the branchpoint sequence (BPS) in pre-mRNA. Sequence independent binding of SF3A/SF3B complex upstream of the branch site is essential, it may anchor U2 snRNP to the pre-mRNA. May also be involved in the assembly of the 'E' complex.

組織特異性 Ubiquitously expressed.

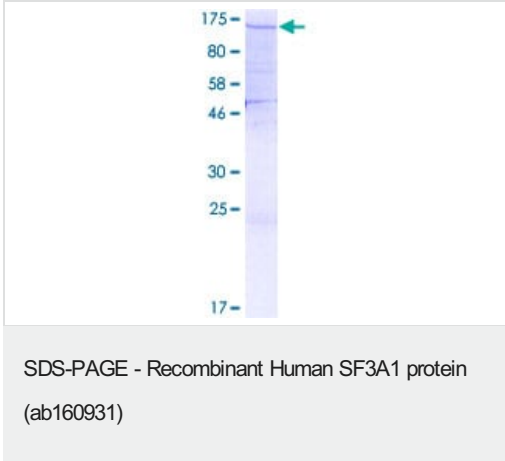
配列類似性 Contains 2 SURP motif repeats.

Contains 1 ubiquitin-like domain.

翻訳後修飾 Phosphorylated upon DNA damage, probably by ATM or ATR.

細胞内局在 Nucleus.

画像



ab160931 on a 12.5% SDS-PAGE stained with Coomassie Blue.

Please note: All products are "FOR RESEARCH USE ONLY. NOT FOR USE IN DIAGNOSTIC PROCEDURES"

Our Abpromise to you: Quality guaranteed and expert technical support

- Replacement or refund for products not performing as stated on the datasheet
- Valid for 12 months from date of delivery
- Response to your inquiry within 24 hours
- We provide support in Chinese, English, French, German, Japanese and Spanish
- Extensive multi-media technical resources to help you
- We investigate all quality concerns to ensure our products perform to the highest standards

If the product does not perform as described on this datasheet, we will offer a refund or replacement. For full details of the Abpromise, please visit <https://www.abcam.co.jp/abpromise> or contact our technical team.

Terms and conditions

- Guarantee only valid for products bought direct from Abcam or one of our authorized distributors