

Product datasheet

Recombinant Human SERCA1 ATPase protein ab152208

画像数 1

製品の詳細

製品名	Recombinant Human SERCA1 ATPase protein
発現系	Wheat germ
アクセッション番号	<u>O14983</u>
タンパク質長	Protein fragment
Animal free	No
由来	Recombinant
生物種	Human
配列	IDRCNYVRVGTTTRVPLTGPVKEKIMAVIKEWGTGRDTLRCLA LATRDTPP KREEMVLDD SARFLEYETDLTFVGVVGM LDP PRKEVTGSIQ
予測される分子量	36 kDa including tags
領域	522 to 612

特性

Our **Abpromise guarantee** covers the use of **ab152208** in the following tested applications.

The application notes include recommended starting dilutions; optimal dilutions/concentrations should be determined by the end user.

アプリケーション	SDS-PAGE Western blot ELISA
製品の状態	Liquid
備考	

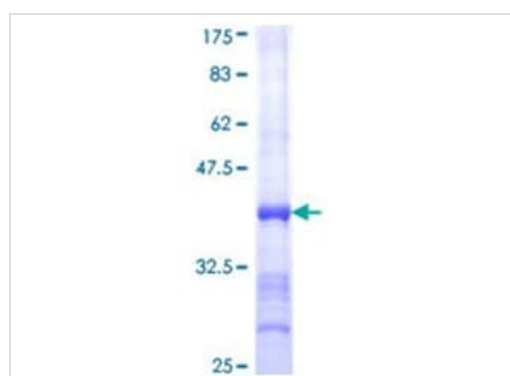
前処理および保存

保存方法および安定性	Shipped on dry ice. Upon delivery aliquot and store at -80°C. Avoid freeze / thaw cycles. pH: 8.00 Constituents: 0.31% Glutathione, 0.79% Tris HCl
------------	--

関連情報

機能	Key regulator of striated muscle performance by acting as the major Ca(2+) ATPase responsible for the reuptake of cytosolic Ca(2+) into the sarcoplasmic reticulum. Catalyzes the hydrolysis of ATP coupled with the translocation of calcium from the cytosol to the sarcoplasmic reticulum lumen. Contributes to calcium sequestration involved in muscular excitation/contraction.
組織特異性	Skeletal muscle, fast twitch muscle (type II) fibers.
関連疾患	Brody myopathy
配列類似性	Belongs to the cation transport ATPase (P-type) (TC 3.A.3) family. Type IIA subfamily.
発生段階	Isoform SERCA1A accounts for more than 99% of SERCA1 isoforms expressed in adult skeletal muscle, while isoform SERCA1B predominates in neo-natal skeletal muscle.
細胞内局在	Endoplasmic reticulum membrane. Sarcoplasmic reticulum membrane.

画像



12.5% SDS-PAGE analysis of ab152208 stained with Coomassie Blue.

SDS-PAGE - Recombinant Human SERCA1
ATPase protein (ab152208)

Please note: All products are "FOR RESEARCH USE ONLY. NOT FOR USE IN DIAGNOSTIC PROCEDURES"

Our Abpromise to you: Quality guaranteed and expert technical support

- Replacement or refund for products not performing as stated on the datasheet
- Valid for 12 months from date of delivery
- Response to your inquiry within 24 hours
- We provide support in Chinese, English, French, German, Japanese and Spanish
- Extensive multi-media technical resources to help you
- We investigate all quality concerns to ensure our products perform to the highest standards

If the product does not perform as described on this datasheet, we will offer a refund or replacement. For full details of the Abpromise, please visit <https://www.abcam.co.jp/abpromise> or contact our technical team.

Terms and conditions

- Guarantee only valid for products bought direct from Abcam or one of our authorized distributors