

Product datasheet

Recombinant Human S100 alpha 2/S100A2 protein ab104821

画像数 1

製品の詳細

製品名	Recombinant Human S100 alpha 2/S100A2 protein
精製度	> 90 % SDS-PAGE. ab104821 was purified using conventional chromatography techniques.
発現系	Escherichia coli
アクセッション番号	<u>P29034</u>
タンパク質長	Full length protein
Animal free	No
由来	Recombinant
生物種	Human
配列	MGSSHHHHHSSGLVPRGSHMCSSLEQALAVLVTTFHKYS CQEGDKFKLS KGEMKELLHKELPSFVGEKVDEEGLKKLMSGSLDENSQQVDF QEYAVFLA LITVMCNDFFGCPDRP
予測される分子量	13 kDa including tags
領域	2 to 98
タグ	His tag N-Terminus

特性

Our **Abpromise guarantee** covers the use of **ab104821** in the following tested applications.

The application notes include recommended starting dilutions; optimal dilutions/concentrations should be determined by the end user.

アプリケーション	SDS-PAGE Mass Spectrometry
質量分析	MALDI-TOF
製品の状態	Liquid
備考	This product was previously labelled as S100 alpha 2

前処理および保存

保存方法および安定性

Shipped at 4°C. Upon delivery aliquot and store at -20°C or -80°C. Avoid repeated freeze / thaw cycles.

pH: 8.00

Constituents: 0.077% DTT, 0.316% Tris HCl, 30% Glycerol (glycerin, glycerine), 1.16% Sodium chloride

関連情報

機能

May function as calcium sensor and modulator, contributing to cellular calcium signaling. May function by interacting with other proteins, such as TPR-containing proteins, and indirectly play a role in many physiological processes. May also play a role in suppressing tumor cell growth.

組織特異性

A subset of epithelial cells including normal human mammary epithelial cells and keratinocytes.

配列類似性

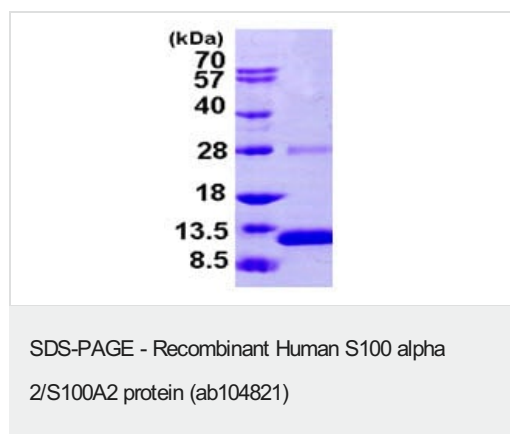
Belongs to the S-100 family.

Contains 2 EF-hand domains.

発生段階

Preferentially expressed in normal human mammary epithelial cells as opposed to tumor-derived ones. The level of S100L was shown to correlate inversely with tumor progression.

画像



15% SDS-PAGE analysis of 3µg ab104821.

Please note: All products are "FOR RESEARCH USE ONLY. NOT FOR USE IN DIAGNOSTIC PROCEDURES"

Our Abpromise to you: Quality guaranteed and expert technical support

- Replacement or refund for products not performing as stated on the datasheet
- Valid for 12 months from date of delivery
- Response to your inquiry within 24 hours
- We provide support in Chinese, English, French, German, Japanese and Spanish
- Extensive multi-media technical resources to help you
- We investigate all quality concerns to ensure our products perform to the highest standards

If the product does not perform as described on this datasheet, we will offer a refund or replacement. For full details of the Abpromise, please visit <https://www.abcam.co.jp/abpromise> or contact our technical team.

Terms and conditions

- Guarantee only valid for products bought direct from Abcam or one of our authorized distributors