

Recombinant human Rsk 2 / MAPKAP Kinase 1b (mutated L608F) protein ab172182

画像数 2

製品の詳細

製品名	Recombinant human Rsk 2 / MAPKAP Kinase 1b (mutated L608F) protein
生理活性	Specific Activity, 140 nmol/min/mg.
精製度	> 95 % Densitometry. Affinity purified.
発現系	Baculovirus infected Sf9 cells
アクセッション番号	<u>NM_004586</u>
タンパク質長	Full length protein
Animal free	No
由来	Recombinant
生物種	Human
配列	MPLAQLADPWQKMAVESPSDSAENGQQIMDEPMGEEEEINPQT EEVSIKEI AITHHVKEGHEKADPSQFELLKVLGQGSFGKVFLVKKISGSD ARQLYAMK VLKKATLKVRDRVRTKMERDILVEVNHPFIVKLHYAFQTEGK LYLILDFL RGGDLFTRLSKEVMFTEEDVKFYLAELALALDHLHSLGIIYR DLKPENIL LDEEGHIKLTDFGLSKESIDHEKKAYSFCGTVEYMAPEVVNR RGHTQSAD WWSFGVLMFEMLTGTLPFQGKDRKETMTMILKAKLGMPQFLS PEAQSLLR MLFKRNPANRLGAGPDGVVEEIKRHSFFSTIDWNKLYRREIHP PFKPATGR PEDTFYFDPEFTAKTPKDSPIPPSANAHQLFRGFSFVAITS DDESQAMQ TVGVHSIVQQLHRNSIQFTDGYEVKEDIGVGSYSVCKRCIHK ATNMEFAV KIIDKSKRDPTEEIEILLRYGQHPNIITLKDVYDDGKYVYVV TELMKGGE LLDKILRQKFFSEREASAVLFTITKTVEYLHAQGVVHRDLKP SNILYVDE

SGNPESIRICDFGFAKQLRAENGLLMTPCYTANFVAPEVLKR
QGYDAACD
IWSLGVLLYTMLTGYTPFANGPDDTPEEILARIGSGKFSLSG
GYWNSVSD
TAKDLVSKMLHVDPHQRLTAALVLRHPWIVHWDQLPQYQLNR
QDAPHLVK
GAMAATYSALNRNQSPVLEPVGRSTLAQRRGIKKITSTAL

予測される分子量 84 kDa
領域 1 to 740
タグ proprietary tag N-Terminus

特性

Our **Abpromise guarantee** covers the use of **ab172182** in the following tested applications.

The application notes include recommended starting dilutions; optimal dilutions/concentrations should be determined by the end user.

アプリケーション Functional Studies
Western blot
SDS-PAGE

製品の状態 Liquid

前処理および保存

保存方法および安定性 Shipped on Dry Ice. Upon delivery aliquot. Store at -80°C. Avoid freeze / thaw cycle.
pH: 7.50
Constituents: 25% Glycerol (glycerin, glycerine), 0.88% Sodium chloride, 0.31% Glutathione, 0.003% EDTA, 0.004% DTT, 0.61% Tris-HCl buffer, 0.002% PMSF
This product is an active protein and may elicit a biological response in vivo, handle with caution.

関連情報

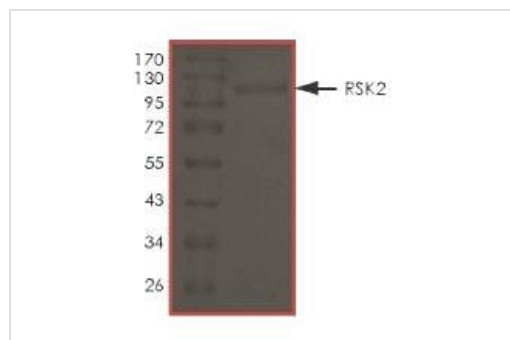
機能 Serine/threonine kinase that may play a role in mediating the growth-factor and stress induced activation of the transcription factor CREB.

組織特異性 Expressed in many tissues, highest levels in skeletal muscle.

関連疾患 Defects in RPS6KA3 are the cause of Coffin-Lowry syndrome (CLS) [MIM:303600]; an X-linked dominant disorder characterized by severe mental retardation with facial and digital dysmorphisms, and progressive skeletal deformations.

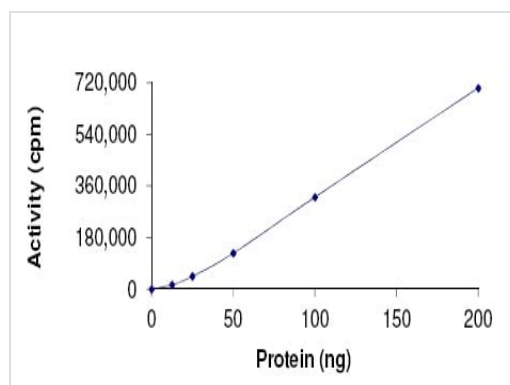
配列類似性 Belongs to the protein kinase superfamily. AGC Ser/Thr protein kinase family. S6 kinase subfamily.
Contains 1 AGC-kinase C-terminal domain.
Contains 2 protein kinase domains.

翻訳後修飾 Autophosphorylated on Ser-386, as part of the activation process.
Ser-227 phosphorylation promotes Ser-386 phosphorylation and leads to basal activation. Full activation by growth factors requires additional phosphorylation on Ser-369.



ab172182 on SDS-PAGE.

SDS-PAGE - Recombinant human Rsk 2 /
 MAPKAP Kinase 1b (mutated L608F) protein
 (ab172182)



Sample Kinase Activity Plot. ab172182 specific activity was determined to be 140 nmol/min/mg.

Functional Studies - Recombinant human Rsk 2 /
 MAPKAP Kinase 1b (mutated L608F) protein
 (ab172182)

Please note: All products are "FOR RESEARCH USE ONLY. NOT FOR USE IN DIAGNOSTIC PROCEDURES"

Our Abpromise to you: Quality guaranteed and expert technical support

- Replacement or refund for products not performing as stated on the datasheet
- Valid for 12 months from date of delivery
- Response to your inquiry within 24 hours
- We provide support in Chinese, English, French, German, Japanese and Spanish
- Extensive multi-media technical resources to help you
- We investigate all quality concerns to ensure our products perform to the highest standards

If the product does not perform as described on this datasheet, we will offer a refund or replacement. For full details of the Abpromise, please visit <https://www.abcam.co.jp/abpromise> or contact our technical team.

Terms and conditions

- Guarantee only valid for products bought direct from Abcam or one of our authorized distributors