

# Recombinant human ROR1 protein ab140807

画像数 2

### 製品の詳細

製品名	Recombinant human ROR1 protein
生理活性	The specific activity of ROR1 was determined to be 0.2 nmol/min/mg.
精製度	> 95 % Densitometry. Affinity purified.
発現系	Baculovirus infected Sf9 cells
アクセッション番号	<b><u>Q01973</u></b>
タンパク質長	Protein fragment
Animal free	No
由来	Recombinant
生物種	Human
配列	RNNQKSSSAPVQRQPKHVGRQNVEMSMLNAYKPKSKAKELPL SAVRFMEE LGECAFGKIYKGHLYLPGMDHAQLVAIKTLKDYNNPQQWTEF QQEASLMA ELHHPNIVCLLGAVTQEQPVCMLFEYINQDLHEFLIMRSPH SDVGCSSD EDGTVKSSLDHGDFLHIAIQIAAGMEYLSSHFFVHKDLAARN ILIGQLH VKISDLGLSREIYSADYYRVQSKSLLPIRWMPPEAIMYGKFS SDSDIWSF GVVLWEIFSFGLQPYYGFSNQEVIEVMVRKRQLLPCSEDCPPR MYSLMTEC WNEIPSRPRFRKDIHVRLRSWEGLSSHTSSTTPSGGNATTQT TSLSASPV SNLSNPRYPNYMFPSQGITPQGQIAGFIGPPIPQNQRFIPIN GYPIPPGY AAFPAAHYQPTGPPRVIQHCPPPKSRSPPSSASGSTSTGHVTS LPSSGSNQ EANIPLLPHMSIPNHPGGMGITVFGNKSQKPYKIDSKQASLL GDANIHGH TESMISAEL
予測される分子量	82 kDa including tags
領域	429 to 937
タグ	GST tag N-Terminus

## 特性

---

Our **Abpromise guarantee** covers the use of **ab140807** in the following tested applications.

The application notes include recommended starting dilutions; optimal dilutions/concentrations should be determined by the end user.

### アプリケーション

Functional Studies

SDS-PAGE

Western blot

### 製品の状態

Liquid

### 備考

**ab64311** (Myelin Basic Protein protein) can be utilized as a substrate for assessing kinase activity

## 前処理および保存

---

### 保存方法および安定性

Shipped on dry ice. Upon delivery aliquot and store at -80°C. Avoid freeze / thaw cycles.

pH: 7

Constituents: 0.31% Glutathione, 0.002% PMSF, 0.004% DTT, 0.79% Tris HCl, 0.003% EDTA, 0.88% Sodium chloride

This product is an active protein and may elicit a biological response in vivo, handle with caution.

## 関連情報

---

### 機能

Tyrosine-protein kinase receptor whose role is not yet clear.

### 組織特異性

Expressed strongly in human heart, lung and kidney, but weakly in the CNS. Isoform Short is strongly expressed in fetal and adult CNS and in a variety of human cancers, including those originating from CNS or PNS neuroectoderm.

### 配列類似性

Belongs to the protein kinase superfamily. Tyr protein kinase family. ROR subfamily.

Contains 1 FZ (frizzled) domain.

Contains 1 Ig-like C2-type (immunoglobulin-like) domain.

Contains 1 kringle domain.

Contains 1 protein kinase domain.

### 発生段階

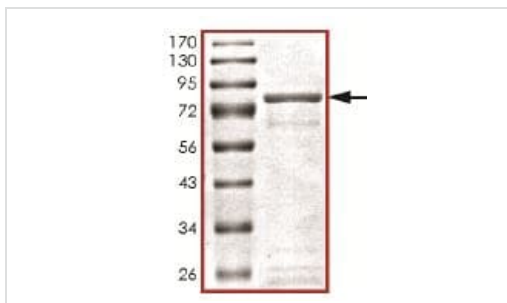
Expressed at high levels during early embryonic development. The expression levels drop strongly around day 16 and there are only very low levels in adult tissues.

### 細胞内局在

Membrane.

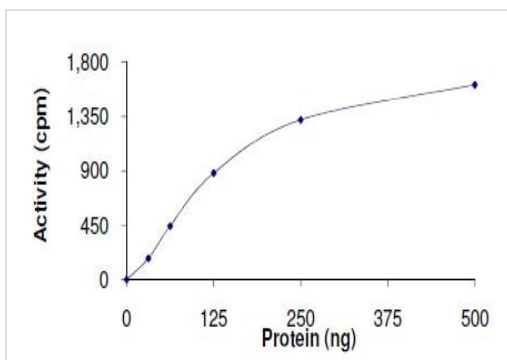
## 画像

---



SDS PAGE analysis of ab140807 at ~82 kDa.

SDS-PAGE - Recombinant human ROR1 protein (ab140807)



The specific activity of ROR1 (ab140807) was determined to be 0.2 nmol /min/mg.

Functional Studies - Recombinant human ROR1 protein (ab140807)

**Please note:** All products are "FOR RESEARCH USE ONLY. NOT FOR USE IN DIAGNOSTIC PROCEDURES"

### Our Abpromise to you: Quality guaranteed and expert technical support

- Replacement or refund for products not performing as stated on the datasheet
- Valid for 12 months from date of delivery
- Response to your inquiry within 24 hours
- We provide support in Chinese, English, French, German, Japanese and Spanish
- Extensive multi-media technical resources to help you
- We investigate all quality concerns to ensure our products perform to the highest standards

If the product does not perform as described on this datasheet, we will offer a refund or replacement. For full details of the Abpromise, please visit <https://www.abcam.co.jp/abpromise> or contact our technical team.

## Terms and conditions

---

- Guarantee only valid for products bought direct from Abcam or one of our authorized distributors