

# Recombinant Human PTGES2/Gbf1 protein ab107954

画像数 1

### 製品の詳細

製品名	Recombinant Human PTGES2/Gbf1 protein
精製度	> 95 % SDS-PAGE. ab107954 was purified by using conventional chromatography techniques.
発現系	Escherichia coli
アクセッション番号	<b><u>A6NHH0</u></b>
タンパク質長	Full length protein
Animal free	No
由来	Recombinant
生物種	Human
配列	<b>MGSSHHHHHHSSGLVPRGSHMKAVNEQGKEVTEFGNKYWL</b> <b>MLNEKEAQQV</b> <b>YGGKEARTEEMKWRQWADDWLVLISPNVYRTPTEALASFDY</b> <b>IVREGKFG</b> <b>AVEGAVAKYMGAAAMYLIISKRLKSRHRLQDNVREDLYEAADK</b> <b>WVAAVGKD</b> <b>RPFMGGQKPNLADLAVYGVLRVMEGLDAFDDLMQHITHIQPWY</b> <b>LRVERAIT EASPAH</b>
予測される分子量	24 kDa including tags
領域	1 to 206
タグ	His tag N-Terminus

### 特性

Our **Abpromise guarantee** covers the use of **ab107954** in the following tested applications.

The application notes include recommended starting dilutions; optimal dilutions/concentrations should be determined by the end user.

アプリケーション	Mass Spectrometry
	SDS-PAGE
質量分析	MALDI-TOF
製品の状態	Liquid
備考	This product was previously labelled as PTGES2

## 前処理および保存

### 保存方法および安定性

Shipped at 4°C. Store at +4°C short term (1-2 weeks). Upon delivery aliquot. Store at -20°C or -80°C. Avoid freeze / thaw cycle.

pH: 8.00

Constituents: 0.0308% DTT, 0.316% Tris HCl, 20% Glycerol (glycerin, glycerine), 1.16% Sodium chloride

## 関連情報

### 機能

Isomerase that catalyzes the conversion of unstable intermediate of prostaglandin E2 H2 (PGH2) into the more stable prostaglandin E2 (PGE2) form. May also have transactivation activity toward IFN-gamma (IFNG), possibly via an interaction with CEBPB; however, the relevance of transcription activation activity remains unclear.

### 組織特異性

Widely expressed. Expressed in the heart, including apex, inter-ventricular septum, both atria and ventricles, but not in the aorta. Also expressed in fetal heart. Detected in various regions of the brain: cerebellum; occipital, frontal and parietal lobes. Also expressed in the lymph nodes, skeletal muscle, kidney and trachea, but not in the thymus or lung. Overexpressed in colorectal cancer.

### パスウェイ

Lipid metabolism; prostaglandin biosynthesis.

### 配列類似性

Belongs to the GST superfamily.

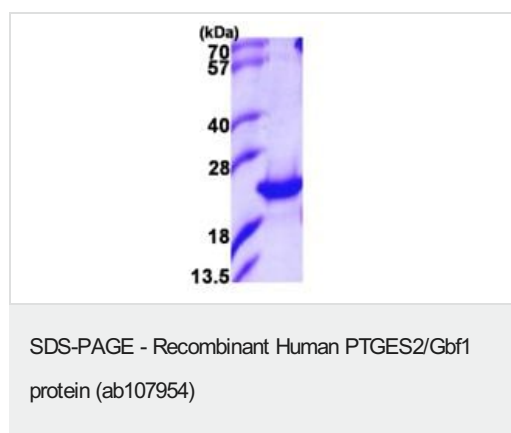
Contains 1 glutaredoxin domain.

Contains 1 GST C-terminal domain.

### 細胞内局在

Golgi apparatus membrane and Cytoplasm > perinuclear region. Synthesized as a Golgi membrane-bound protein, which is further cleaved into the predominant soluble truncated form. The truncated form is cytoplasmic and is enriched in the perinuclear region.

## 画像



15% SDS-PAGE analysis of ab107954 (3 µg).

**Please note:** All products are "FOR RESEARCH USE ONLY. NOT FOR USE IN DIAGNOSTIC PROCEDURES"

### **Our Abpromise to you: Quality guaranteed and expert technical support**

---

- Replacement or refund for products not performing as stated on the datasheet
- Valid for 12 months from date of delivery
- Response to your inquiry within 24 hours
  
- We provide support in Chinese, English, French, German, Japanese and Spanish
- Extensive multi-media technical resources to help you
- We investigate all quality concerns to ensure our products perform to the highest standards

If the product does not perform as described on this datasheet, we will offer a refund or replacement. For full details of the Abpromise, please visit <https://www.abcam.co.jp/abpromise> or contact our technical team.

### **Terms and conditions**

---

- Guarantee only valid for products bought direct from Abcam or one of our authorized distributors