

Recombinant Human Progerin protein ab93918

画像数 1

製品の詳細

製品名	Recombinant Human Progerin protein
精製度	> 90 % SDS-PAGE.
発現系	Escherichia coli
アクセッション番号	<u>P02545</u>
タンパク質長	Full length protein
Animal free	No
由来	Recombinant
生物種	Human

配列	MAHHHHHHVGTGSNDDDDKSPDMETPSQRRATRSGAQSSTP LSPTRITR LQEKEDLQELNDRLAVYIDRVRSLETENAGLRLRITESEEVV SREVSGIK AAEAEELGDARKTLDSVAKERARLQLELSKVREEFKELKARN TKKEGDLI AAQARLKDLEALLNSKEAALSTALSEKRTLEGELHDLRGQVA KLEAALGE AKKQLQDEMLRRVDAENRLQTMKEELDFQKNIYSEELRETKR RHETRLVE IDNGKQREFESRLADALQELRAQHEDQVEQYKKELEKTYSAK LDNARQSA ERNSNLVGAAHEELQQSRIRIDSLSAQLSQLQKQLAAKEAKL RDLEDSL RERDTSRRLLAEKEREMAEMRARMQQQLDEYQELLDIKLALD MEIHAYRK LLEGEERLRLSPSPTSQRSRGRASSHSSQTQGGGSVTKKRK LESTESRS SFSQHARTSGRVAVEEVDEEGKFVRLRNKSNEDQSMGNWQIK RQNGDDPL LTYRFPPKFTLKAGQVVTIWAAGAGATHSPPTDLVWKAQNTW GCGNSLRT ALINSTGEEVAMRKLVRVSVTVVEDEDEDGDDLHHHHGSHC SSSGDPAE YNLRSRTVLCGTCGQPADKASASGSGAQSPQNCSIM
----	--

領域 1 to 614
タグ His tag N-Terminus , DDDDK tag N-Terminus

特性

Our **Abpromise guarantee** covers the use of **ab93918** in the following tested applications.

The application notes include recommended starting dilutions; optimal dilutions/concentrations should be determined by the end user.

アプリケーション Western blot
SDS-PAGE

製品の状態 Liquid

前処理および保存

保存方法および安定性 Shipped at 4°C. Upon delivery aliquot. Store at -80°C. Avoid freeze / thaw cycle.
Constituents: 20% Glycerol, 0.315% Tris HCl, 2.922% Sodium chloride, 0.015% DTT, 0.044% EDTA

関連情報

機能 Lamins are components of the nuclear lamina, a fibrous layer on the nucleoplasmic side of the inner nuclear membrane, which is thought to provide a framework for the nuclear envelope and may also interact with chromatin. Lamin A and C are present in equal amounts in the lamina of mammals. Plays an important role in nuclear assembly, chromatin organization, nuclear membrane and telomere dynamics. Required for normal development of peripheral nervous system and skeletal muscle and for muscle satellite cell proliferation. Required for osteoblastogenesis and bone formation. Also prevents fat infiltration of muscle and bone marrow, helping to maintain the volume and strength of skeletal muscle and bone. Prelamin-A/C can accelerate smooth muscle cell senescence. It acts to disrupt mitosis and induce DNA damage in vascular smooth muscle cells (VSMCs), leading to mitotic failure, genomic instability, and premature senescence.

組織特異性 In the arteries, prelamin-A/C accumulation is not observed in young healthy vessels but is prevalent in medial vascular smooth muscle cells (VSMCs) from aged individuals and in atherosclerotic lesions, where it often colocalizes with senescent and degenerate VSMCs. Prelamin-A/C expression increases with age and disease. In normal aging, the accumulation of prelamin-A/C is caused in part by the down-regulation of ZMPSTE24/FACE1 in response to oxidative stress.

関連疾患 Emery-Dreifuss muscular dystrophy 2, autosomal dominant
Emery-Dreifuss muscular dystrophy 3, autosomal recessive
Cardiomyopathy, dilated 1A
Lipodystrophy, familial partial, 2
Limb-girdle muscular dystrophy 1B
Charcot-Marie-Tooth disease 2B1
Hutchinson-Gilford progeria syndrome
Cardiomyopathy, dilated, with hypergonadotropic hypogonadism
Mandibuloacral dysplasia with type A lipodystrophy
Lethal tight skin contracture syndrome
Heart-hand syndrome Slovenian type

Muscular dystrophy congenital LMNA-related

Defects in LMNA may cause a late-onset cardiocutaneous progeria syndrome characterized by cutaneous manifestations of aging appearing in the third decade of life, cardiac valve calcification and dysfunction, prominent atherosclerosis, and cardiomyopathy, leading to death on average in the fourth decade.

配列類似性

Belongs to the intermediate filament family.

Contains 1 LTD domain.

翻訳後修飾

Increased phosphorylation of the lamins occurs before envelope disintegration and probably plays a role in regulating lamin associations.

Proteolytic cleavage of the C-terminal of 18 residues of prelamin-A/C results in the production of lamin-A/C. The prelamin-A/C maturation pathway includes farnesylation of CAAX motif, ZMPSTE24/FACE1 mediated cleavage of the last three amino acids, methylation of the C-terminal cysteine and endoproteolytic removal of the last 15 C-terminal amino acids. Proteolytic cleavage requires prior farnesylation and methylation, and absence of these blocks cleavage.

Sumoylation is necessary for the localization to the nuclear envelope.

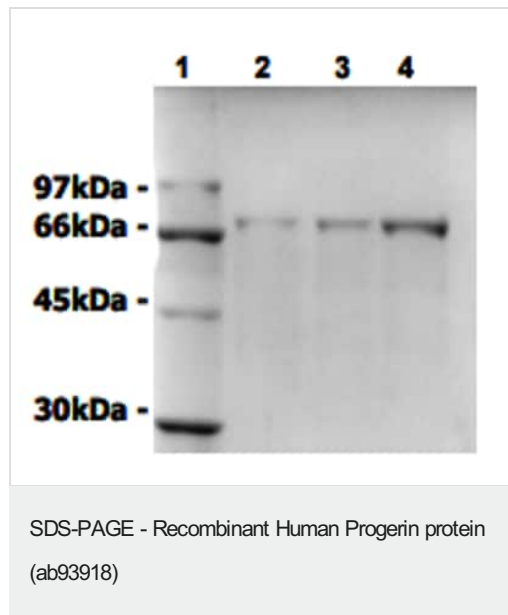
Farnesylation of prelamin-A/C facilitates nuclear envelope targeting.

細胞内局在

Nucleus speckle and Nucleus. Nucleus envelope. Nucleus lamina. Nucleus, nucleoplasm.

Farnesylation of prelamin-A/C facilitates nuclear envelope targeting and subsequent cleavage by ZMPSTE24/FACE1 to remove the farnesyl group produces mature lamin-A/C, which can then be inserted into the nuclear lamina. EMD is required for proper localization of non-farnesylated prelamin-A/C.

画像



Purified recombinant human progerin protein, ab93918 (lane 1, molecular weight standard; lane 2, 1µg; lane 3, 3µg; lane 4, 5µg) was separated by SDS-PAGE (10% polyacrylamide) and stained with Coomassie Blue.

Please note: All products are "FOR RESEARCH USE ONLY. NOT FOR USE IN DIAGNOSTIC PROCEDURES"

Our Abpromise to you: Quality guaranteed and expert technical support

- Replacement or refund for products not performing as stated on the datasheet
- Valid for 12 months from date of delivery

- Response to your inquiry within 24 hours
- We provide support in Chinese, English, French, German, Japanese and Spanish
- Extensive multi-media technical resources to help you
- We investigate all quality concerns to ensure our products perform to the highest standards

If the product does not perform as described on this datasheet, we will offer a refund or replacement. For full details of the Abpromise, please visit <https://www.abcam.co.jp/abpromise> or contact our technical team.

Terms and conditions

- Guarantee only valid for products bought direct from Abcam or one of our authorized distributors