

Recombinant Human PP2A-alpha protein (Tagged) ab114424

画像数 1

製品の詳細

製品名	Recombinant Human PP2A-alpha protein (Tagged)
発現系	Wheat germ
アクセッション番号	P67775
タンパク質長	Full length protein
Animal free	No
由来	Recombinant
生物種	Human
配列	MDEKVFTKELDQWIEQLNECKQLSESQVKSLCEKAKEILTKE SNVQEVRC PVTVCGDVHGQFHDLMELEFRIGGKSPDTNYLFMGDYVDRGYY SVETVTLL VALKVRYSRITILRGNHESRQITQVYGFYDECLRKYGNANV WKYFTDLF DYLPLTALVDGQIFCLHGGLSPSIDTLDIRALDRLQVEPHE GPMCDLLW SDPDDRGGWGISPRGAGYTFGQDISETFNHANGLTLVSRAHQ LVMEGYNW CHDRNVVTIFSAFNPCYRCGNQAAIMELDDTLKYSFLQFDPA PRRGEPHV TRRTPDYFL
予測される分子量	60 kDa including tags
領域	1 to 309
タグ	GST tag N-Terminus

特性

Our **Abpromise guarantee** covers the use of **ab114424** in the following tested applications.

The application notes include recommended starting dilutions; optimal dilutions/concentrations should be determined by the end user.

アプリケーション	ELISA Western blot SDS-PAGE
製品の状態	Liquid

前処理および保存

保存方法および安定性

Shipped on dry ice. Upon delivery aliquot and store at -80°C. Avoid freeze / thaw cycles.

pH: 8.00

Constituents: 0.3% Glutathione, 0.79% Tris HCl

関連情報

機能

PP2A can modulate the activity of phosphorylase B kinase casein kinase 2, mitogen-stimulated S6 kinase, and MAP-2 kinase. Cooperates with SGOL2 to protect centromeric cohesin from separase-mediated cleavage in oocytes specifically during meiosis I (By similarity). Can dephosphorylate SV40 large T antigen and p53/TP53. Dephosphorylates SV40 large T antigen, preferentially on serine residues 120, 123, 677, and perhaps 679. The C subunit was most active, followed by the AC form, which was more active than the ABC form, and activity of all three forms was strongly stimulated by manganese, and to a lesser extent by magnesium. Dephosphorylation by the AC form, but not C or ABC form is inhibited by small T antigen.

配列類似性

Belongs to the PPP phosphatase family. PP-1 subfamily.

翻訳後修飾

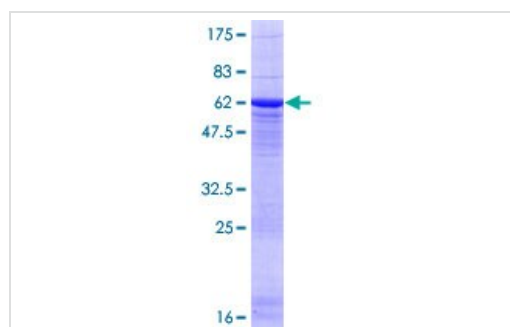
Reversibly methyl esterified on Leu-309. Carboxyl methylation may play a role in holoenzyme assembly. It varies during the cell cycle.

Phosphorylation of either threonine (by autophosphorylation-activated protein kinase) or tyrosine results in inactivation of the phosphatase. Auto-dephosphorylation has been suggested as a mechanism for reactivation.

細胞内局在

Cytoplasm. Nucleus. Chromosome > centromere. Cytoplasm > cytoskeleton > spindle pole. In prometaphase cells, but not in anaphase cells, localizes at centromeres. During mitosis, also found at spindle poles. Centromeric localization requires the presence of SGOL2.

画像



ab114424 analysed on a 12.5% SDS-PAGE gel stained with Coomassie Blue.

SDS-PAGE - Recombinant Human PP2A-alpha protein (ab114424)

Please note: All products are "FOR RESEARCH USE ONLY. NOT FOR USE IN DIAGNOSTIC PROCEDURES"

Our Abpromise to you: Quality guaranteed and expert technical support

- Replacement or refund for products not performing as stated on the datasheet
- Valid for 12 months from date of delivery
- Response to your inquiry within 24 hours

- We provide support in Chinese, English, French, German, Japanese and Spanish
- Extensive multi-media technical resources to help you
- We investigate all quality concerns to ensure our products perform to the highest standards

If the product does not perform as described on this datasheet, we will offer a refund or replacement. For full details of the Abpromise, please visit <https://www.abcam.co.jp/abpromise> or contact our technical team.

Terms and conditions

- Guarantee only valid for products bought direct from Abcam or one of our authorized distributors