

### Recombinant human PKC mu/PKD protein ab60873

画像数 6

#### 製品の詳細

---

製品名	Recombinant human PKC mu/PKD protein
精製度	> 90 % Densitometry. Affinity purified.
発現系	Baculovirus infected Sf9 cells
タンパク質長	Full length protein
Animal free	No
由来	Recombinant
生物種	Human

#### 特性

---

Our **Abpromise guarantee** covers the use of **ab60873** in the following tested applications.

The application notes include recommended starting dilutions; optimal dilutions/concentrations should be determined by the end user.

アプリケーション	SDS-PAGE Functional Studies Western blot
製品の状態	Liquid
備考	<b>ab204856</b> (CREB peptide) can be utilized as a substrate for assessing kinase activity This product was previously labelled as PKC mu

#### 前処理および保存

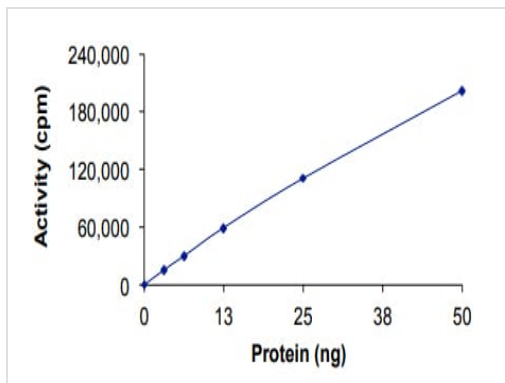
---

保存方法および安定性	Shipped on dry ice. Upon delivery aliquot and store at -80°C. Avoid freeze / thaw cycles. pH: 7.50 Constituents: 0.0038% EGTA, 0.00174% PMSF, 0.00385% DTT, 0.79% Tris HCl, 0.00292% EDTA, 25% Glycerol (glycerin, glycerine), 0.87% Sodium chloride This product is an active protein and may elicit a biological response in vivo, handle with caution.
------------	--------------------------------------------------------------------------------------------------------------------------------------------------------------------------------------------------------------------------------------------------------------------------------------------------------------------------------------------------------------------

## 関連情報

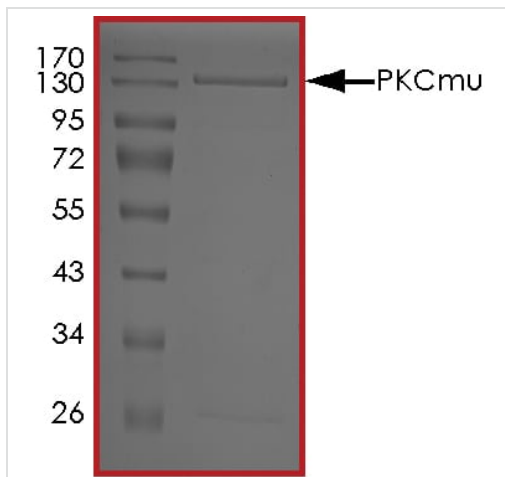
機能	Converts transient diacylglycerol (DAG) signals into prolonged physiological effects, downstream of PKC. Involved in resistance to oxidative stress through activation of NF-kappa-B.
配列類似性	Belongs to the protein kinase superfamily. CAMK Ser/Thr protein kinase family. PKD subfamily. Contains 1 PH domain. Contains 2 phorbol-ester/DAG-type zinc fingers. Contains 1 protein kinase domain.
細胞内局在	Cytoplasm. Membrane. Translocation to the cell membrane is required for kinase activation.

## 画像



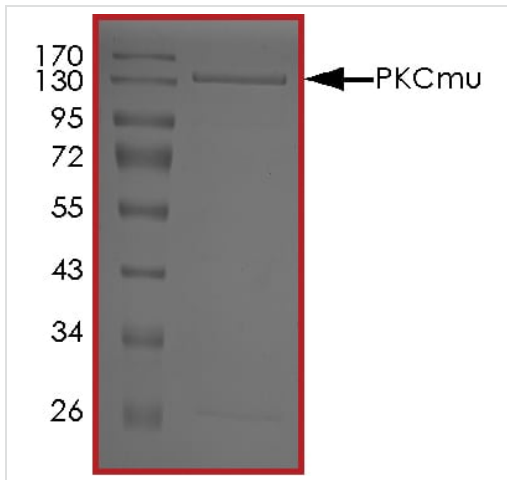
Functional Studies - Recombinant human PKC mu/PKD protein (ab60873)

The specific activity of PKC mu/PKD (ab60873) was determined to be 650 nmol/min/mg as per activity assay protocol



SDS PAGE analysis of ab60873

SDS-PAGE - Recombinant human PKC mu/PKD protein (ab60873)



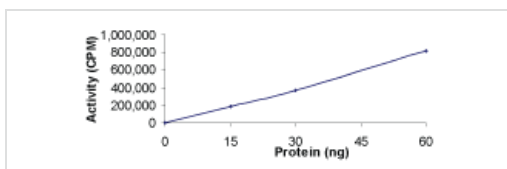
SDS PAGE analysis of ab60873

SDS-PAGE - Recombinant human PKC mu/PKD protein (ab60873)



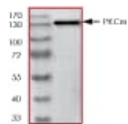
Ab5283 recognizes the full length tagged recombinant PKC mu protein (ab60873) which has an expected molecular weight of 131 kDa.

Western blot - Recombinant human PKC mu/PKD protein (ab60873)



Sample Kinase Activity Plot.

Functional Studies - Recombinant human PKC mu/PKD protein (ab60873)



ab60873 on SDS-PAGE, MW ~131 kDa.

SDS-PAGE - Recombinant human PKC mu/PKD protein (ab60873)

**Please note:** All products are "FOR RESEARCH USE ONLY. NOT FOR USE IN DIAGNOSTIC PROCEDURES"

### Our Abpromise to you: Quality guaranteed and expert technical support

---

- Replacement or refund for products not performing as stated on the datasheet
- Valid for 12 months from date of delivery
- Response to your inquiry within 24 hours
- We provide support in Chinese, English, French, German, Japanese and Spanish
- Extensive multi-media technical resources to help you
- We investigate all quality concerns to ensure our products perform to the highest standards

If the product does not perform as described on this datasheet, we will offer a refund or replacement. For full details of the Abpromise, please visit <https://www.abcam.co.jp/abpromise> or contact our technical team.

### Terms and conditions

---

- Guarantee only valid for products bought direct from Abcam or one of our authorized distributors