

Recombinant human PKC delta protein ab60844

1 References [画像数 6](#)

製品の詳細

製品名	Recombinant human PKC delta protein
生理活性	Specific Activity: 302 nmol/min/mg.
精製度	> 90 % Densitometry. Affinity purified.
発現系	Baculovirus infected Sf9 cells
タンパク質長	Full length protein
Animal free	No
由来	Recombinant
生物種	Human
タグ	GST tag N-Terminus

特性

Our **Abpromise guarantee** covers the use of **ab60844** in the following tested applications.

The application notes include recommended starting dilutions; optimal dilutions/concentrations should be determined by the end user.

アプリケーション	Functional Studies
	SDS-PAGE
	Western blot

製品の状態	Liquid
-------	--------

備考	Phosphatidylinositol is the most potent activator of PKC delta. ab204856 (CREB peptide) can be utilized as a substrate for assessing kinase activity
----	--

前処理および保存

保存方法および安定性	Shipped on dry ice. Upon delivery aliquot and store at -80°C. Avoid freeze / thaw cycles. pH: 7.50 Constituents: 0.0038% EGTA, 0.00174% PMSF, 0.00385% DTT, 0.79% Tris HCl, 0.00292% EDTA, 25% Glycerol, 0.87% Sodium chloride
------------	--

This product is an active protein and may elicit a biological response in vivo, handle with caution.

関連情報

機能

This is calcium-independent, phospholipid-dependent, serine- and threonine-specific enzyme. PKC is activated by diacylglycerol which in turn phosphorylates a range of cellular proteins. PKC also serves as the receptor for phorbol esters, a class of tumor promoters. May play a role in antigen-dependent control of B-cell function. Phosphorylates MUC1 in the C-terminal and regulates the interaction between MUC1 and beta-catenin.

配列類似性

Belongs to the protein kinase superfamily. AGC Ser/Thr protein kinase family. PKC subfamily. Contains 1 AGC-kinase C-terminal domain. Contains 1 C2 domain. Contains 2 phorbol-ester/DAG-type zinc fingers. Contains 1 protein kinase domain.

ドメイン

The C1 domain, containing the phorbol ester/DAG-type region 1 (C1A) and 2 (C1B), is the diacylglycerol sensor. The C2 domain is a non-calcium binding domain. It binds proteins containing phosphotyrosine in a sequence-specific manner.

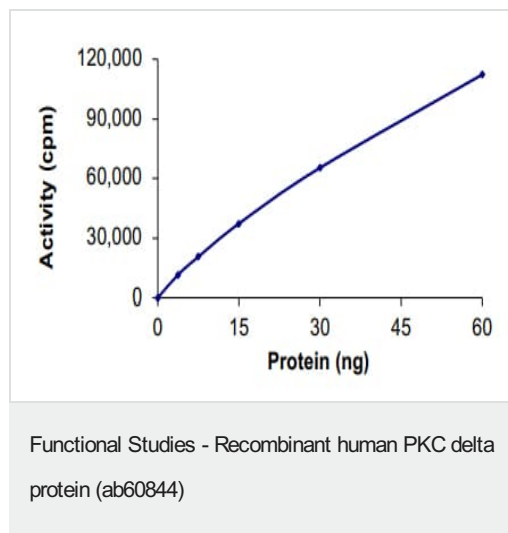
翻訳後修飾

Phosphorylated on Thr-507, within the activation loop. Autophosphorylated and/or phosphorylated. Although the Thr-507 phosphorylation occurs it is not a prerequisite for enzymatic activity.

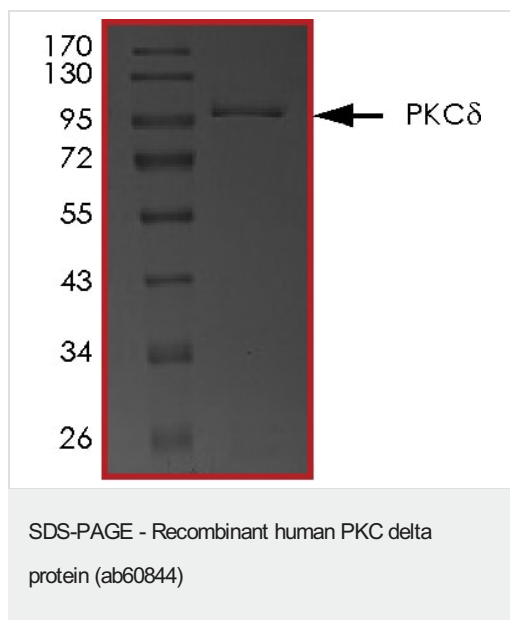
細胞内局在

Cytoplasm. Membrane.

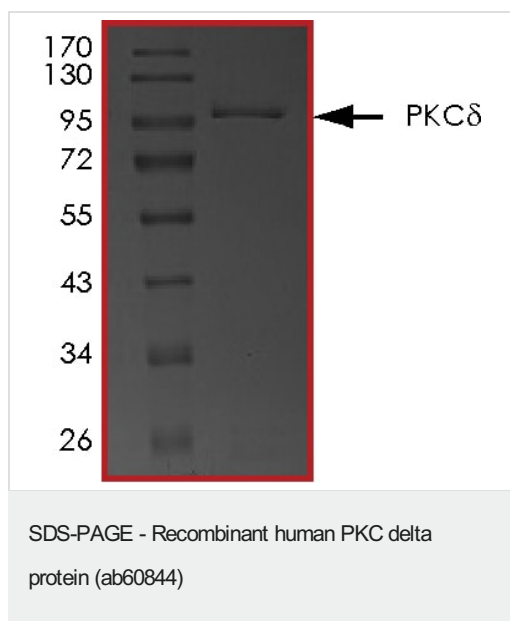
画像



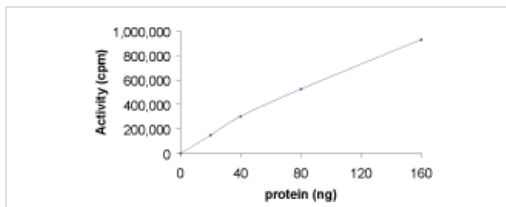
The specific activity of PKC delta (ab60844) was determined to be 250 nmol/min/mg as per activity assay protocol



SDS PAGE analysis of ab60844

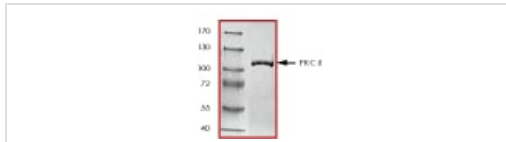


SDS PAGE analysis of ab60844



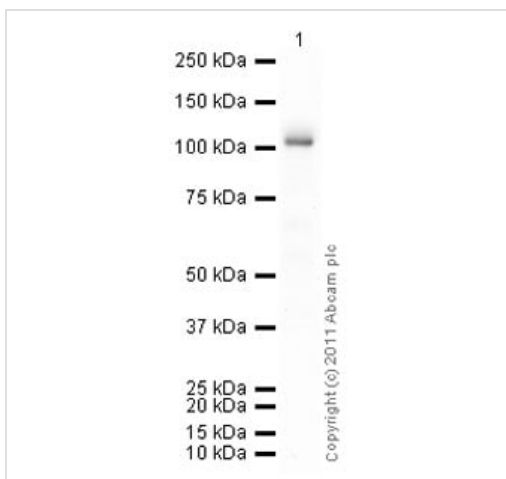
Sample Kinase Activity Plot.

Functional Studies - Recombinant human PKC delta protein (ab60844)



ab60844 on SDS-PAGE, MW ~104 kDa.

SDS-PAGE - Recombinant human PKC delta protein (ab60844)



Western blot - Recombinant human PKC delta protein (ab60844)

Please note: All products are "FOR RESEARCH USE ONLY. NOT FOR USE IN DIAGNOSTIC PROCEDURES"

Our Abpromise to you: Quality guaranteed and expert technical support

- Replacement or refund for products not performing as stated on the datasheet
- Valid for 12 months from date of delivery
- Response to your inquiry within 24 hours
- We provide support in Chinese, English, French, German, Japanese and Spanish
- Extensive multi-media technical resources to help you
- We investigate all quality concerns to ensure our products perform to the highest standards

If the product does not perform as described on this datasheet, we will offer a refund or replacement. For full details of the Abpromise, please visit <https://www.abcam.co.jp/abpromise> or contact our technical team.

Terms and conditions

- Guarantee only valid for products bought direct from Abcam or one of our authorized distributors