

Recombinant human PKC alpha protein (Active) ab55672

[4 References](#) [画像数 3](#)

製品の詳細

製品名	Recombinant human PKC alpha protein (Active)
生理活性	Specific Activity: 3,200 nmol/min/mg.
精製度	> 95 % Densitometry. Affinity purified.
発現系	Baculovirus infected Sf9 cells
アクセッション番号	<u>P17252</u>
タンパク質長	Full length protein
Animal free	No
由来	Recombinant
生物種	Human
配列	<pre> MADVFPGNDS TASQDVANRF ARKGALRQKN VHEVKDHKFI ARFFKQPTFC SHCTDFIWGF GKQGFQCQVC CFVVHKRCHE FVTFSCPGAD KGPDTDDPRS KHKFKIHTYG SPTFCDHCGS LLYGLIHQGM KCDTCDMNVH KQCVINVPSL CGMDHTEKRG RIYLKAEVAD EKLHVTVRDA KNLIPMDPNG LSDPYVKLKL IPDPKNESKQ KTKTIRSTLN PQWNESFTFK LKPSDKDRRL SVEIWDWDRTRNDFMGSLSGVSELMKMP ASGWYKLLNQ EEEGEYINVPI PEGDEEGNME LRQKF EKAKL GPAGNKVISP SEDRKQPSNN LDRVKL TDFN FLMVLGKGSF GKVMLADRKG TEELYAIKIL KKD VVIQDDD VECTMVEKRV LALLDKPPFL TQLHSCFQTV DRLYFVMEYV NGGDLMYHIQ QVGKFKEPQA VFYAAEISIG LFFLHKGRII YRDLKLDNVM LDSEGHKIA DFGMCKEHMM DGV TTRTFCG TPDYIAPEII AYQPYGKSVD WWAYGVLLYE MLAGQPPFDG EDEDEL FQSI MEHNVSYPKS LSKEAVSVCK GLMTKHPAKR LCGPEGERD VREHAFFRRI DWEKLENREI QPPFKPKVCG KGAENFDKFF TRGQPVLTPP DQLVIANIDQ SDFEGFSYVN PQFVHPILQS AV </pre>

予測される分子量	103 kDa
領域	1 to 672
タグ	GST tag N-Terminus
配列の追加情報	(NM_002737)

特性

Our **Abpromise guarantee** covers the use of **ab55672** in the following tested applications.

The application notes include recommended starting dilutions; optimal dilutions/concentrations should be determined by the end user.

アプリケーション	Functional Studies
	Western blot
	SDS-PAGE

製品の状態 Liquid

備考 **ab204856** (CREB peptide) can be utilized as a substrate for assessing kinase activity.

For optimal storage, aliquot target into smaller quantities after centrifugation and store at recommended temperature.

Avoid repeated handling.

前処理および保存

保存方法および安定性 Shipped on dry ice. Upon delivery aliquot and store at -80°C. Avoid freeze / thaw cycles.

pH: 7.50

Constituents: 0.00174% PMSF, 0.00385% DTT, 0.79% Tris HCl, 0.00292% EDTA, 25% Glycerol, 0.87% Sodium chloride, 0.31% Glutathione

This product is an active protein and may elicit a biological response in vivo, handle with caution.

関連情報

機能 This is a calcium-activated, phospholipid-dependent, serine- and threonine-specific enzyme. May play a role in cell motility by phosphorylating CSPG4.

PKC is activated by diacylglycerol which in turn phosphorylates a range of cellular proteins. PKC also serves as the receptor for phorbol esters, a class of tumor promoters.

配列類似性 Belongs to the protein kinase superfamily. AGC Ser/Thr protein kinase family. PKC subfamily.

Contains 1 AGC-kinase C-terminal domain.

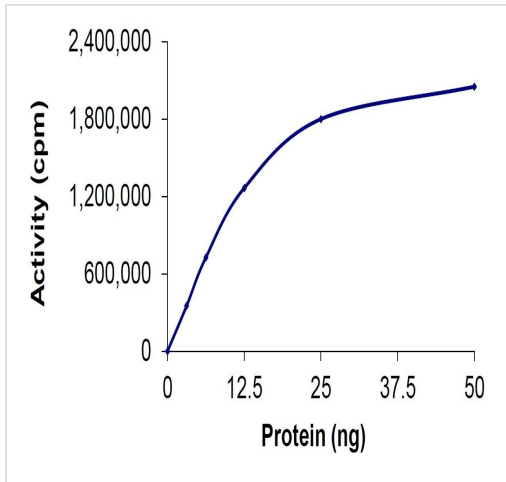
Contains 1 C2 domain.

Contains 2 phorbol-ester/DAG-type zinc fingers.

Contains 1 protein kinase domain.

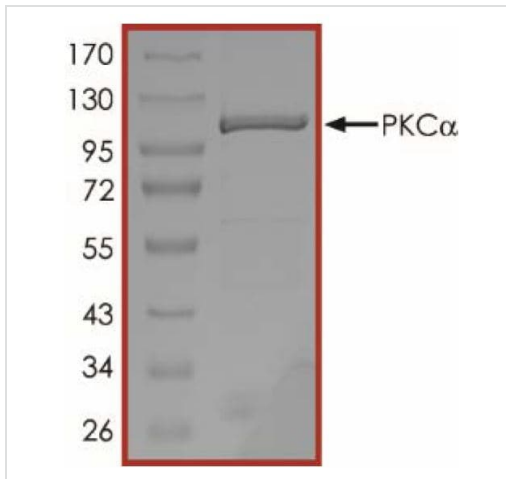
細胞内局在 Cytoplasm. Cell membrane. Nucleus.

画像



Specific activity: 3,200 nmol/min/mg

Functional Studies - Recombinant human PKC alpha protein (ab55672)



Purity >95% by densitometry.

SDS-PAGE - Recombinant human PKC alpha protein (ab55672)



Western blot - Recombinant human PKC alpha protein (ab55672)

Please note: All products are "FOR RESEARCH USE ONLY. NOT FOR USE IN DIAGNOSTIC PROCEDURES"

Our Abpromise to you: Quality guaranteed and expert technical support

- Replacement or refund for products not performing as stated on the datasheet
- Valid for 12 months from date of delivery
- Response to your inquiry within 24 hours

- We provide support in Chinese, English, French, German, Japanese and Spanish
- Extensive multi-media technical resources to help you
- We investigate all quality concerns to ensure our products perform to the highest standards

If the product does not perform as described on this datasheet, we will offer a refund or replacement. For full details of the Abpromise, please visit <https://www.abcam.co.jp/abpromise> or contact our technical team.

Terms and conditions

- Guarantee only valid for products bought direct from Abcam or one of our authorized distributors