

Recombinant Human PINX1/LPTS protein ab85338

画像数 1

製品の詳細

製品名	Recombinant Human PINX1/LPTS protein		
精製度	> 95 % SDS-PAGE. ab85338 is purified using conventional chromatography techniques. Endotoxin Level: < 1.0 EU per 1 µg of protein (determined by LAL method ).		
発現系	Escherichia coli		
タンパク質長	Full length protein		
Animal free	No		
由来	Recombinant		
生物種	Human		
配列	MGSSHHHHHH SSGLVPRGSH MSMLAERRRK QKWAVDPQNT AWSNDDSKFG QRMLEKMGWS KGKGLGAQEH GATDHIKVQV KNNHLGLGAT INNEDNWIAH QDDFNQLLAE LNTCHGQETT DSSDKKEKKS FSLEEKSKIS KNRVHYMKFT KGKDLSSRSK TDLDCIFGKR QSKKTPEGDA SPSTPEENET TTTSFTIQE YFAKRMAALK NKPQVPVPGS DISETQVERK RGKKINKEAT GKDVESYLQP KAKRHTEGKP ERAEAQERVA KKKSAPAEQ LRGPCWDQSS KASAQDAGDH VQPPEGRDFT LKPKKRRGKK KLQKPVEIAE DATLEETLVK KKKKKDSK		

特性

Our **Abpromise guarantee** covers the use of **ab85338** in the following tested applications.

The application notes include recommended starting dilutions; optimal dilutions/concentrations should be determined by the end user.

アプリケーション	SDS-PAGE
製品の状態	Liquid
備考	This product was previously labelled as PINX1

## 保存方法および安定性

Shipped at 4°C. Upon delivery aliquot and store at -20°C or -80°C. Avoid repeated freeze / thaw cycles.

pH: 8.00

Constituents: 0.0154% DTT, 0.316% Tris HCl, 10% Glycerol (glycerin, glycerine)

## 関連情報

### 機能

Microtubule-binding protein essential for faithful chromosome segregation. Mediates TRF1 and TERT accumulation in nucleolus and enhances TRF1 binding to telomeres. Inhibits telomerase activity. May inhibit cell proliferation and act as tumor suppressor.

### 組織特異性

Ubiquitous; expressed at low levels. Not detectable in a number of hepatocarcinoma cell lines.

### 配列類似性

Belongs to the PINX1 family.

Contains 1 G-patch domain.

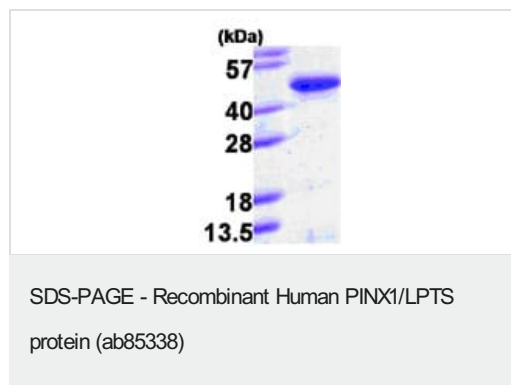
### ドメイン

The TID (telomerase inhibiting domain) domain is sufficient to bind TERT and inhibit its activity. The TBM domain mediates interaction with TERF1.

### 細胞内局在

Nucleus. Nucleus > nucleolus. Chromosome > telomere. Chromosome > centromere > kinetochore. Localizes in nucleoli, at telomere speckles and to the outer plate of kinetochores. Localization to the kinetochore is mediated by its central region and depends on NDC80 and CENPE.

## 画像



15% SDS-PAGE showing ab85338 at approximately 39.1kDa (3μg).

**Please note:** All products are "FOR RESEARCH USE ONLY. NOT FOR USE IN DIAGNOSTIC PROCEDURES"

## Our Abpromise to you: Quality guaranteed and expert technical support

- Replacement or refund for products not performing as stated on the datasheet
- Valid for 12 months from date of delivery
- Response to your inquiry within 24 hours
- We provide support in Chinese, English, French, German, Japanese and Spanish
- Extensive multi-media technical resources to help you
- We investigate all quality concerns to ensure our products perform to the highest standards

If the product does not perform as described on this datasheet, we will offer a refund or replacement. For full details of the Abpromise, please visit <https://www.abcam.co.jp/abpromise> or contact our technical team.

#### **Terms and conditions**

---

- Guarantee only valid for products bought direct from Abcam or one of our authorized distributors