

Recombinant Human PI-16 protein ab117229

画像数 1

製品の詳細

製品名	Recombinant Human PI-16 protein
精製度	> 90 % SDS-PAGE.
エンドキシン・レベル	< 1.000 Eu/μg
発現系	HEK 293 cells
アクセッション番号	Q6UXB8
タンパク質長	Protein fragment
Animal free	No
由来	Recombinant
生物種	Human
配列	LTDEEKRLMV ELHNLRYRAQV SPPASDMLHM RWDEELAAFA KAYARQCQVWG HNKERGRGE NLFAITDEGM DVPLAMEEWH HEREHYNLSA ATCSPGQMC G HYTQVWAKT ERIGCGSHFC EKLQGV EETN IELLVCNYEP PGNVKGKRPY QEGTPCSQCP SGYHCKNSLC EPIGSPEDAQ DLPYLVTEAP SFRATEASDS RKMGT PSSLA TGIPAFLVTE VSGSLATKAL PAVETQAPTS LATKDPPSMA TEAPPCVTTE VPSILAAHSL PSLDEEPVTF PKSTHVPIPK SADKVTDKTK VPSRSPENSL DPKMSLTGAR ELLPHAQEEA EAEAELPPSS EVLASVFPAQ DKPGELQATL DHTGHTSSKS LPNFPNTSAT ANATGGRALA LQSSLPGAEG PDKPSVV SGL NSGPGAAADY KDDDDK
予測される分子量	46 kDa including tags
領域	28 to 442
タグ	DDDDK tag C-Terminus

特性

Our **Abpromise guarantee** covers the use of **ab117229** in the following tested applications.

The application notes include recommended starting dilutions; optimal dilutions/concentrations should be determined by the end user.

アプリケーション	Western blot ELISA
製品の状態	Lyophilized
備考	Previously labelled as Peptidase inhibitor 16.

前処理および保存

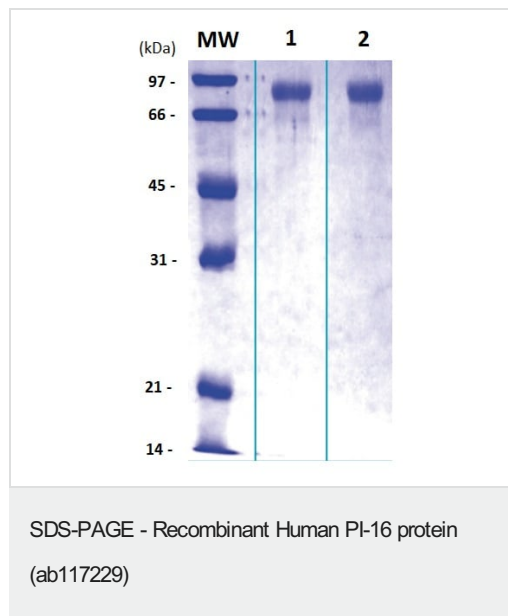
保存方法および安定性	Shipped at 4°C. Store at +4°C short term (1-2 weeks). Upon delivery aliquot. Store at -80°C. Avoid freeze / thaw cycle. pH: 7.50 Constituents: 0.29% Sodium chloride, 0.24% Tris
------------	--

再構成	Add deionized water to prepare a working stock solution of 0.5 mg/mL and let the lyophilized pellet dissolve completely. Product is not sterile! Please filter the product by an appropriate sterile filter before using it in the cell culture.
-----	--

関連情報

機能	Putative serine protease inhibitor.
組織特異性	Expressed in prostate, testis, ovary and intestine. Concentrates in prostate cancer patient's sera.
配列類似性	Belongs to the CRISP family.
翻訳後修飾	N-glycosylated.
細胞内局在	Membrane.

画像



12% SDS-PAGE separation of Human Peptidase inhibitor 16

Lane 1: Reduced and boiled sample (5 µg).

Lane 2: Non-reduced and non-boiled sample (5 µg).

Please note: All products are "FOR RESEARCH USE ONLY. NOT FOR USE IN DIAGNOSTIC PROCEDURES"

Our Abpromise to you: Quality guaranteed and expert technical support

- Replacement or refund for products not performing as stated on the datasheet
- Valid for 12 months from date of delivery
- Response to your inquiry within 24 hours

- We provide support in Chinese, English, French, German, Japanese and Spanish
- Extensive multi-media technical resources to help you
- We investigate all quality concerns to ensure our products perform to the highest standards

If the product does not perform as described on this datasheet, we will offer a refund or replacement. For full details of the Abpromise, please visit <https://www.abcam.co.jp/abpromise> or contact our technical team.

Terms and conditions

- Guarantee only valid for products bought direct from Abcam or one of our authorized distributors