

Recombinant Human PHAPI2 / APRIL protein ab133003

画像数 1

製品の詳細

製品名	Recombinant Human PHAPI2 / APRIL protein
発現系	Wheat germ
アクセッション番号	<u>Q92688</u>
タンパク質長	Full length protein
Animal free	No
由来	Recombinant
生物種	Human
配列	MDMKRRIHLELRNRTPAAVRELVLNCKSNDGKIEGLTAEFV NLEFLSLI NVGLISVSNLPKLPKLLKLESENRIFGGLDMLAEKLPNLTH LNLSGNKL KDISTLEPLKKLECLKSLDLFNCEVTNLNDYRESVFKLLPQL TYLDGYDR EDQEAPDSDAEVDGVDEEEDEEGEDEDEDEDGEEEFDE EDEDEDV EGDEDDDEVSEEEEFGLDEEDEDEDEDEEEEGGKGEKRKR ETDDEGED D
予測される分子量	55 kDa including tags
領域	1 to 251

特性

Our **Abpromise guarantee** covers the use of **ab133003** in the following tested applications.

The application notes include recommended starting dilutions; optimal dilutions/concentrations should be determined by the end user.

アプリケーション	ELISA
	SDS-PAGE
	Western blot

製品の状態 Liquid

備考

前処理および保存

保存方法および安定性

Shipped on dry ice. Upon delivery aliquot and store at -80°C. Avoid freeze / thaw cycles.

pH: 8.00

Constituents: 0.31% Glutathione, 0.79% Tris HCl

関連情報

機能

Multifunctional protein working as a cell cycle progression factor as well as a cell survival factor. Required for the progression from the G1 to the S phase. Anti-apoptotic protein which functions as a caspase-3 inhibitor. Has no phosphatase 2A (PP2A) inhibitor activity (By similarity). Exhibits histone chaperone properties, stimulating core histones to assemble into a nucleosome.

組織特異性

Expressed in heart, lung, pancreas, prostate and in spleen, thymus and placenta.

配列類似性

Belongs to the ANP32 family.
Contains 4 LRR (leucine-rich) repeats.
Contains 1 LRRCT domain.

ドメイン

Histone binding is mediated by the concave surface of the LRR region.

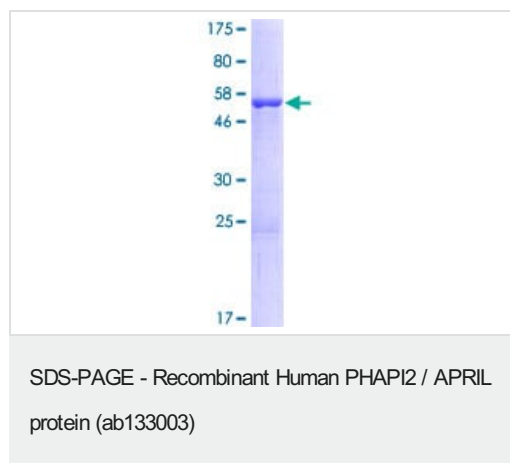
翻訳後修飾

Some glutamate residues are glycosylated by TTLL8. This modification occurs exclusively on glutamate residues and results in a glycine chain on the gamma-carboxyl group.

細胞内局在

Nucleus. Accumulates in the nuclei at the S phase and Cytoplasm. Lacks a nuclear localization signal.

画像



12.5% SDS-PAGE analysis of ab133003 stained with Coomassie Blue.

Please note: All products are "FOR RESEARCH USE ONLY. NOT FOR USE IN DIAGNOSTIC PROCEDURES"

Our Abpromise to you: Quality guaranteed and expert technical support

- Replacement or refund for products not performing as stated on the datasheet
- Valid for 12 months from date of delivery
- Response to your inquiry within 24 hours

- We provide support in Chinese, English, French, German, Japanese and Spanish
- Extensive multi-media technical resources to help you
- We investigate all quality concerns to ensure our products perform to the highest standards

If the product does not perform as described on this datasheet, we will offer a refund or replacement. For full details of the Abpromise, please visit <https://www.abcam.co.jp/abpromise> or contact our technical team.

Terms and conditions

- Guarantee only valid for products bought direct from Abcam or one of our authorized distributors