

Recombinant Human Pellino-3 protein ab132822

画像数 1

製品の詳細

製品名	Recombinant Human Pellino-3 protein
発現系	Wheat germ
アクセッション番号	<u>Q8N2H9-4</u>
タンパク質長	Full length protein
Animal free	No
由来	Recombinant
生物種	Human
配列	MVLEGNPEVGSPRTSDLQHRGNKGSCVLSSPGEDAQPGEETI KYGELIVL GCCEEGGEETEAQRGEVTGPRAHSCYNGCLASGDKGRRRSRL ALSRRSHA NGVKPDVMHHISTPLVSKALSNRGQHSISYTLRSHSVIVEY THDSDTDM FQIGRSTENMIDFVVTDTSPGGGAAEGPSAQSTISRYACRIL CDRRPPYT ARIYAAGFDASSNIFLGERAAKWRTPDGLMDGLTTNGVLVMH PAGGFSED SAPGVWREISVCGNVYTLRDSRSAQQRGKLVGGPLHSPPLSL PGPHKLPI PLPKPGDDLQSFCEPREPQQAPYQGIPGPGGS
予測される分子量	62 kDa including tags
領域	1 to 331

特性

Our **Abpromise guarantee** covers the use of **ab132822** in the following tested applications.

The application notes include recommended starting dilutions; optimal dilutions/concentrations should be determined by the end user.

アプリケーション	ELISA
	SDS-PAGE
	Western blot

製品の状態 Liquid

備考 This product was previously labelled as PELI3.

前処理および保存

保存方法および安定性

Shipped on dry ice. Upon delivery aliquot and store at -80°C. Avoid freeze / thaw cycles.

pH: 8.00

Constituents: 0.31% Glutathione, 0.79% Tris HCl

関連情報

機能

Scaffold protein which probably links Toll-like receptors (TLRs) to basic cellular processes via its interaction with the complex containing IRAK kinases and TRAF6. Can activate AP1/JUN and ELK1. Not required for NF-kappa-B activation. Probably involved in innate immune response.

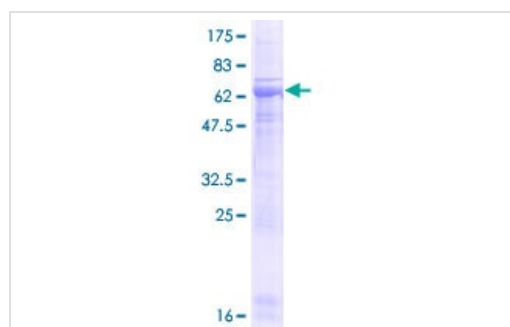
組織特異性

Highly expressed in brain, heart and testis, and at lower level in kidney, liver, lung, placenta, small intestine, spleen and stomach. Isoform 1 is not expressed in lung.

配列類似性

Belongs to the pellino family.

画像



SDS-PAGE - Recombinant Human Pellino-3 protein
(ab132822)

12.5% SDS-PAGE analysis of ab132822 stained with Coomassie Blue.

Please note: All products are "FOR RESEARCH USE ONLY. NOT FOR USE IN DIAGNOSTIC PROCEDURES"

Our Abpromise to you: Quality guaranteed and expert technical support

- Replacement or refund for products not performing as stated on the datasheet
- Valid for 12 months from date of delivery
- Response to your inquiry within 24 hours
- We provide support in Chinese, English, French, German, Japanese and Spanish
- Extensive multi-media technical resources to help you
- We investigate all quality concerns to ensure our products perform to the highest standards

If the product does not perform as described on this datasheet, we will offer a refund or replacement. For full details of the Abpromise,

please visit <https://www.abcam.co.jp/abpromise> or contact our technical team.

Terms and conditions

- Guarantee only valid for products bought direct from Abcam or one of our authorized distributors